



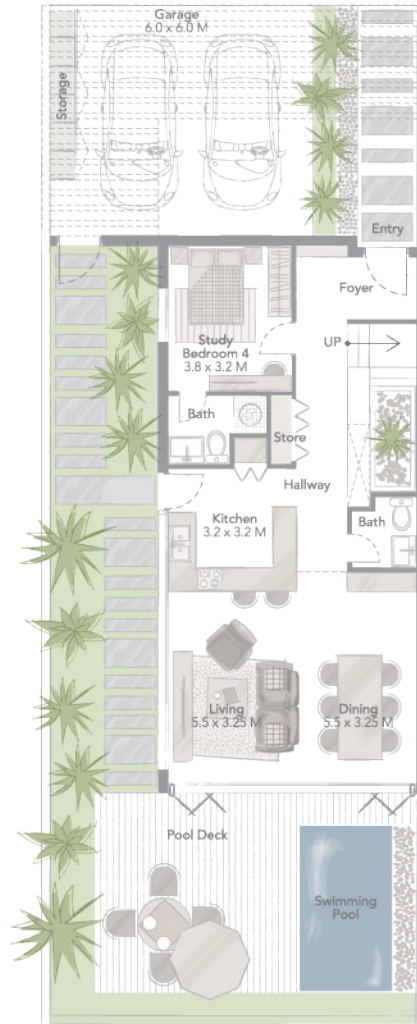
Sky Above.
Green Around.
Peace Within.



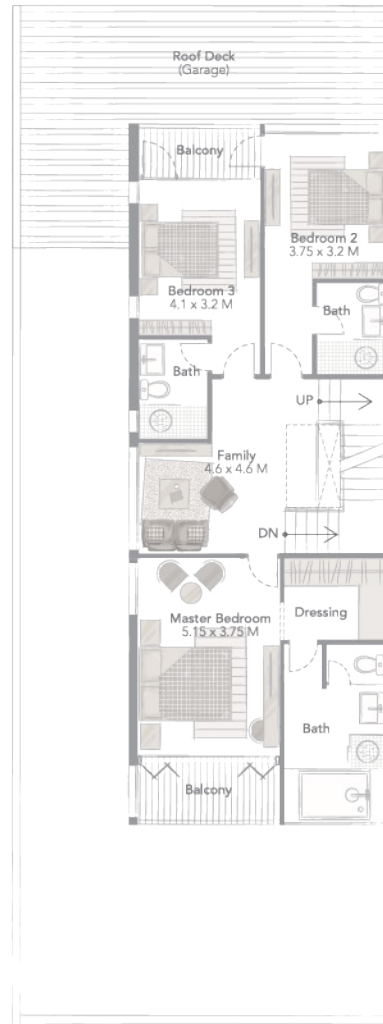
GOLF T1

The four-bedroom townhouses feature an elegant pool deck, garden, and outdoor pool, with a roof garden showcasing panoramic views of the championship golf course and lake. The first floor terrace also offers incredible views and the units are close to the golf courses, communal area, main entrance and exit.

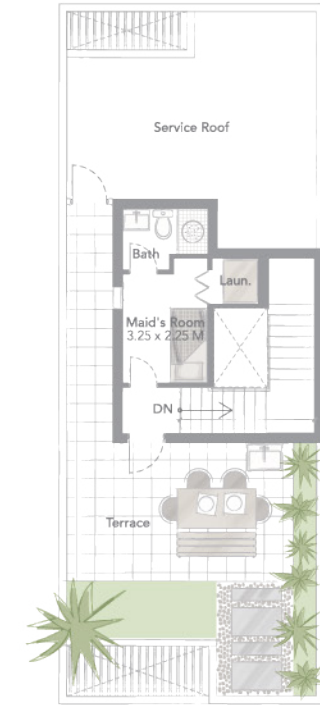
Types	Units	Plot Area ft ²	Unit area ft ²
4 BR + Maid	30	2742.1	3460



GROUND FLOOR



FIRST FLOOR

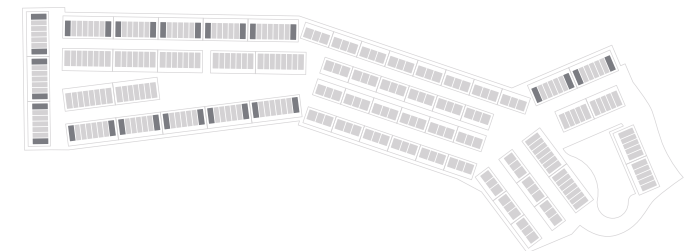


SECOND FLOOR

Disclaimer:

1; All room dimensions are measured to structural elements and exclude wall finishes and construction tolerances. **2;** All dimensions have been provided by our consultant architects. **3;** All materials, dimensions & drawings are approximate. Information is subject to change without notice. **4;** Actual suite area may vary from the stated area. Drawings not to scale. The developer reserves the right to make revisions. **5;** Calculation of suite area is measured as the area bounded by the centre line of demising or partition walls separating one unit from another unit, the exterior face of all exterior walls, and the exterior face of the corridor wall enclosing the adjoining unit. **6;** Calculation of balcony area is measured as the area bounded by the centre line of demising or partition walls separating one unit from another unit, the outmost face of the enclosing guard and the external face of the unit adjoining the balcony. **7;** Columns sizes may vary based on the structural requirements.

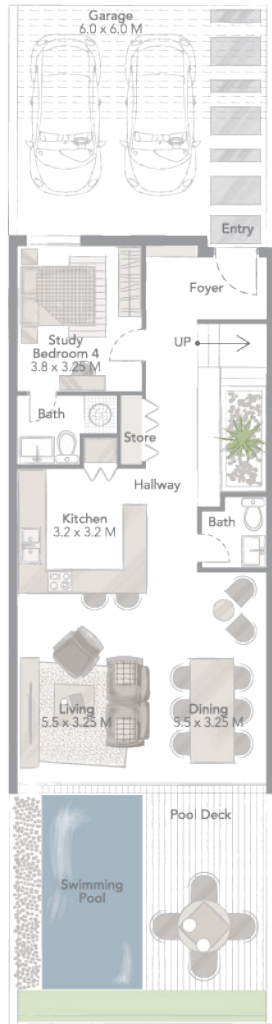
The Visuals, images and pictures found in this brochure are for illustration purposes only and not to be construed as representing the actual and final impression of the concept, products, services, or ideas for Jumeirah Luxury and is subject to change.



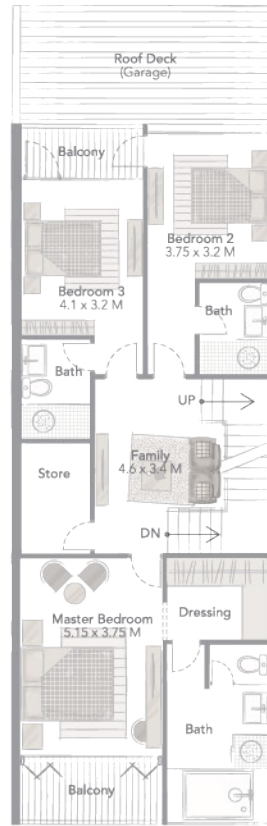
GOLF T2

Each townhouse features a large private garden with a pool deck and lush plant life, as well as full views of the golf course and lake from the spacious first floor terrace and roof garden. Direct access to the championship golf course and lake brings you even closer to nature in these exceptional surroundings.

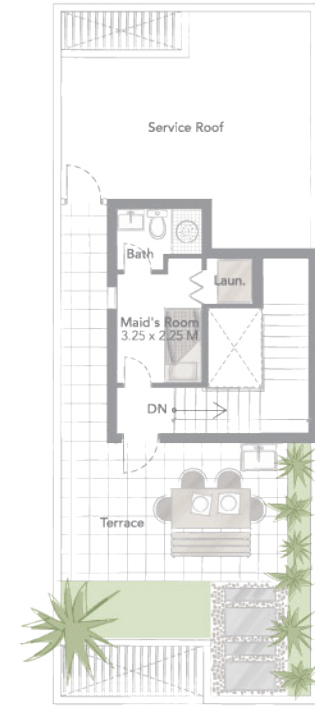
Types	Units	Plot Area ft²	Unit area ft²
4 BR + Maid	79	1910.59	3414



GROUND FLOOR



FIRST FLOOR

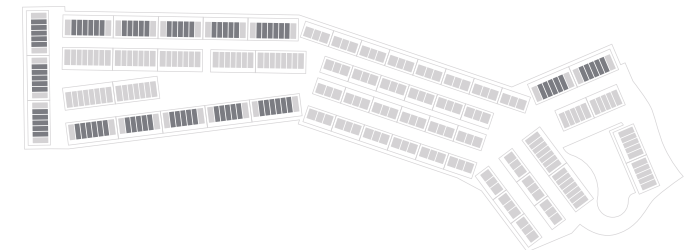


SECOND FLOOR

Disclaimer:

1; All room dimensions are measured to structural elements and exclude wall finishes and construction tolerances. **2;** All dimensions have been provided by our consultant architects. **3;** All materials, dimensions & drawings are approximate. Information is subject to change without notice. **4;** Actual suite area may vary from the stated area. Drawings not to scale. The developer reserves the right to make revisions. **5;** Calculation of suite area is measured as the area bounded by the centre line of demising or partition walls separating one unit from another unit, the exterior face of all exterior walls, and the exterior face of the corridor wall enclosing the adjoining unit. **6;** Calculation of balcony area is measured as the area bounded by the centre line of demising or partition walls separating one unit from another unit, the outmost face of the enclosing guard and the external face of the unit adjoining the balcony. **7;** Columns sizes may vary based on the structural requirements.

The Visuals, images and pictures found in this brochure are for illustration purposes only and not to be construed as representing the actual and final impression of the concept, products, services, or ideas for Jumeirah Luxury and is subject to change.





J U M E I R A H
L U X U R Y

For enquiries contact: info@jumeirahluxuryliving.com **Tel:** +971 4 375 3115

Sales office: Jumeirah Golf Estates - Race to Dubai - Clubhouse

www.jumeirahluxuryliving.com