

Our homes should inspire us to go out into the world, do great things and come back for some well-earned repose.

Many equate home with the idea of owning a place, when in fact it is so much more than that. A home isn't where you keep your belongings, it is where you belong. It is where a sense of space transforms into a sense of feeling and exceptional experiences turn into lifelong memories. It is your very own personal statement, of the life you want to live.

And when you find a place that is truly an extension of who you are. You know, you are home.

Wilton Terraces I. By Ellington.
Welcome home.

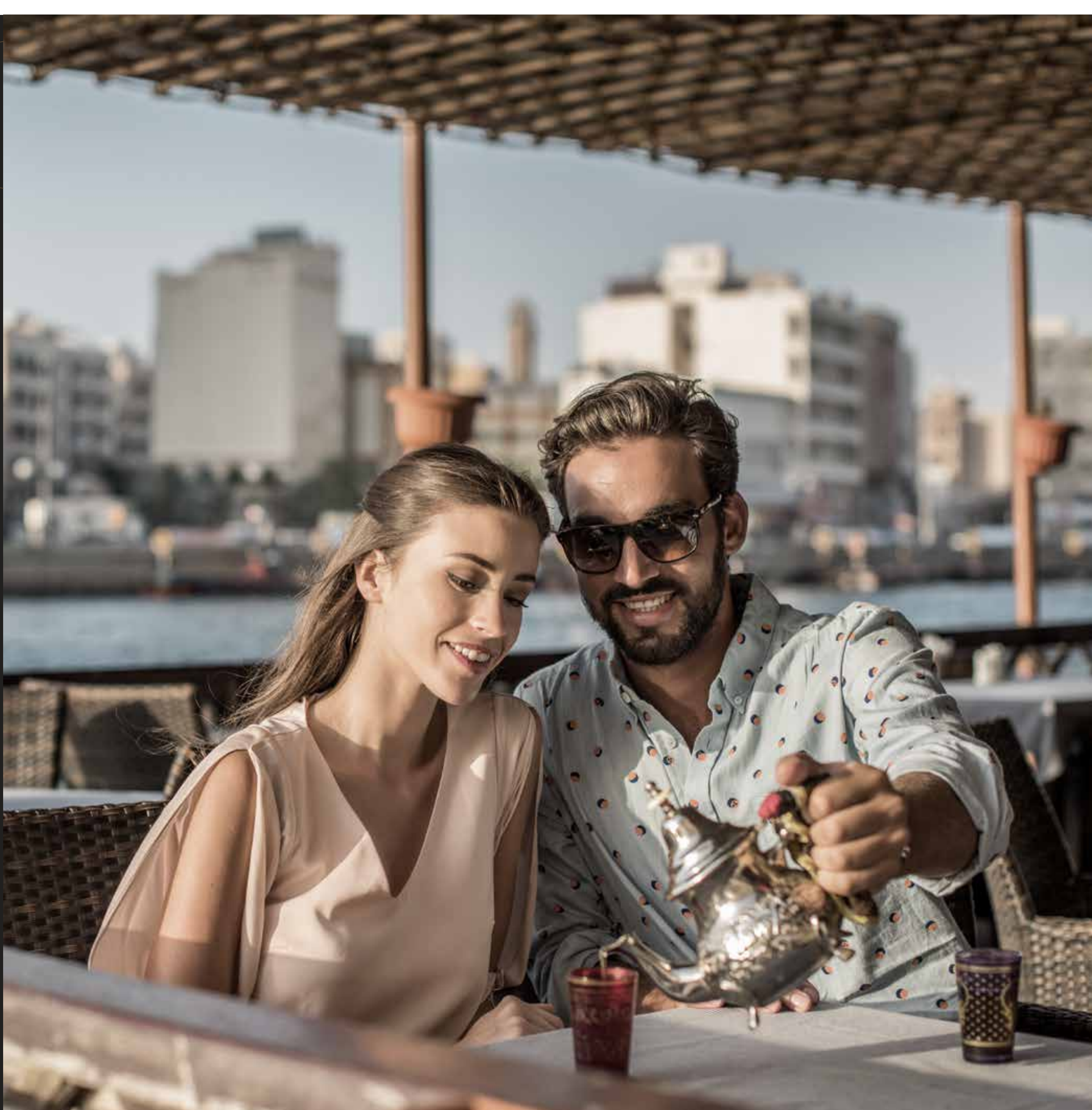
DUBAI. A CITY THAT DEFIES IMAGINATION.



DUBAI. UNPARALLELED, IN EVERY SENSE OF THE WORD.

A city with no exceptions, it's no surprise that Dubai is one of the most impressive global cities in the world. With its pristine beaches, world-class facilities, leisure escapes and famous landmarks, the emirate is known for challenging conventions. Home to the world's tallest building Burj Khalifa and largest shopping mall The Dubai Mall, many spectacular feats of engineering define Dubai's cityscape.

Catering to the increasingly eclectic tastes of its multicultural citizens, Dubai is trend-setting in many ways. From a buzzing nightlife, to a distinctive art and music scene, to endless lifestyle pursuits, the city has something for everyone. Those looking for a vibrant social atmosphere can experience everything from skydiving, indoor snowboarding to international music and film festivals, as well as trendy hotels and world-class gourmet restaurants. For shopping aficionados, the city is a retail paradise with an array of shopping malls, souks and designer boutiques bringing the latest in fashion, technology and more.

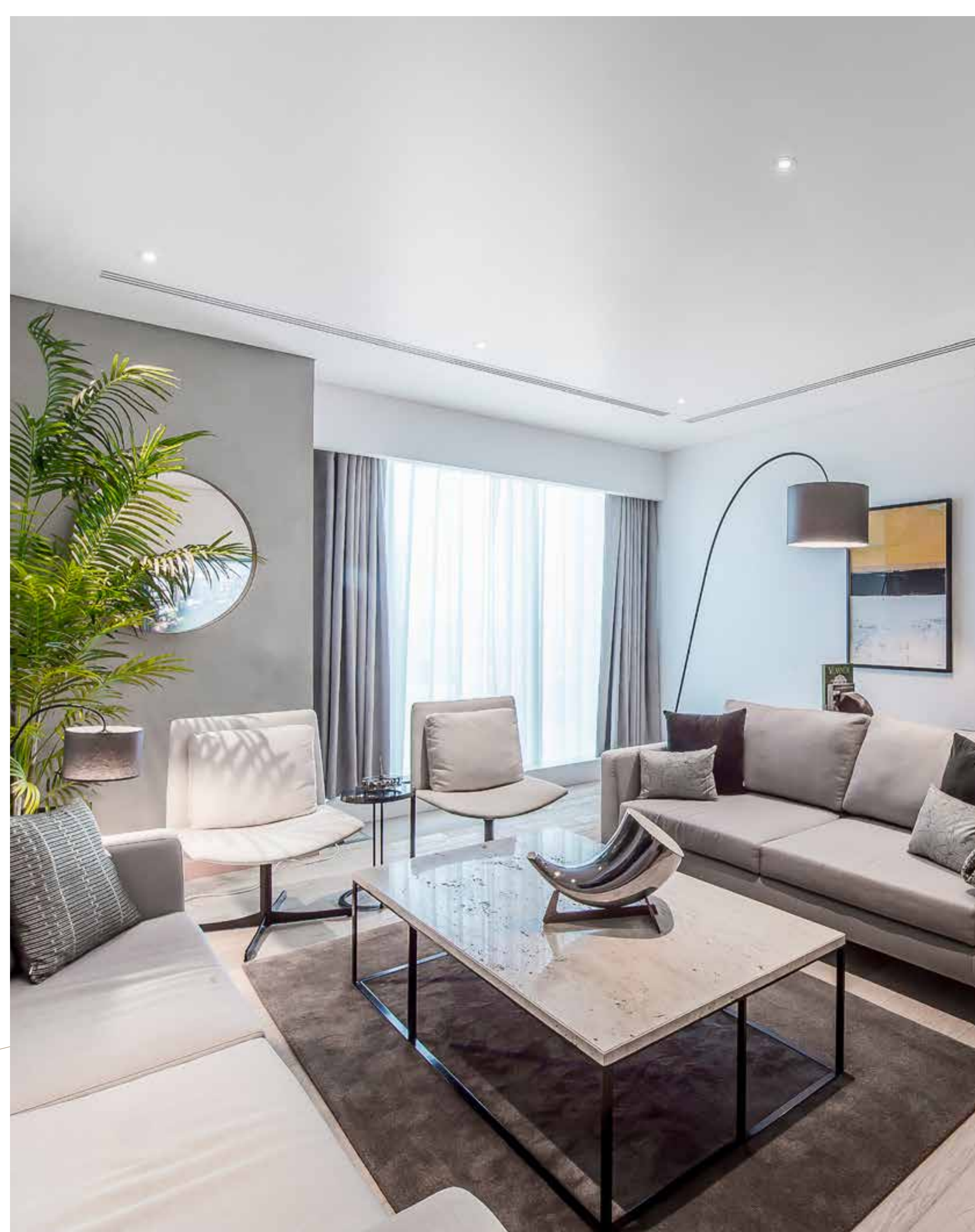




CREATING A HIGHER STANDARD OF LIVING

At Ellington, we believe in doing things differently. By creating spaces that not only transcend the norm but also inspire a unique urban narrative, we craft environments that inspire exceptional lifestyles. Known for innovative projects and an impeccable attention to detail, an Ellington property is the perfect combination of spectacular architecture and intelligent, elegant design of the highest specification.

Each Ellington residence reflects the refined taste of its owners, offering an inimitable premium experience, unlike anything else. By partnering with the world's leading architects, engineers, interior designers and artists, we introduce a new calibre of living that is unsurpassed.





SPACES THAT INSPIRE

Ellington is known for its uncompromising commitment towards crafting living spaces that not only shape but redefine Dubai's real estate landscape. By benchmarking its standards against the world's best, Ellington has brought to life premium homes conceptualised for those who settle for nothing less than exceptional.

DT1

A collection of chic, modern residences, located at Business Bay, DT1 is contemporary living at its finest.

EATON PLACE

A collection of studio, 1, 2 & 3 bedroom apartments in the heart of Jumeirah Village Circle, Eaton Place redefines what it means to be living well.

BELGRAVIA

A selection of 1, 2 and 3 bedroom apartments in the centre of Jumeirah Village Circle, Belgravia is the perfect balance of elegant living in a community environment.

BELGRAVIA II

Uniquely designed, Belgravia II is a collection of studios, 1, 2 and 3 bedroom apartments as well as premium townhouses located in Jumeirah Village Circle. Conceptualised with a focus on community living, Belgravia II sets a new standard for exceptional living.

BELGRAVIA III

Spacious studios, 1, 2 and 3 bedroom apartments, located in the freehold community of Jumeirah Village Circle, Belgravia III creates a beautiful, self-contained environment for residents to escape from the city, yet be connected to things that matter.

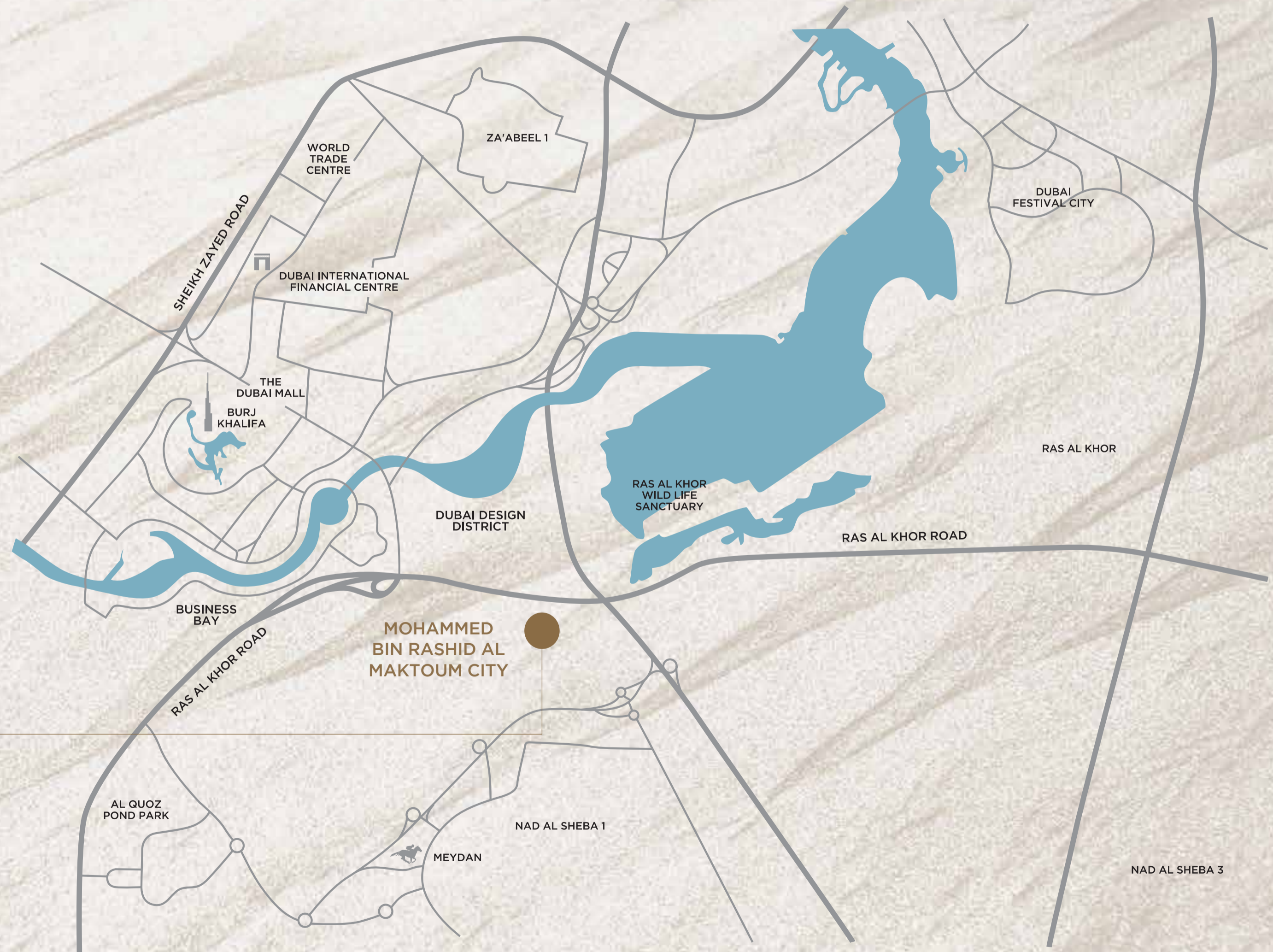
WHERE SOPHISTICATION
IS A WAY OF LIFE

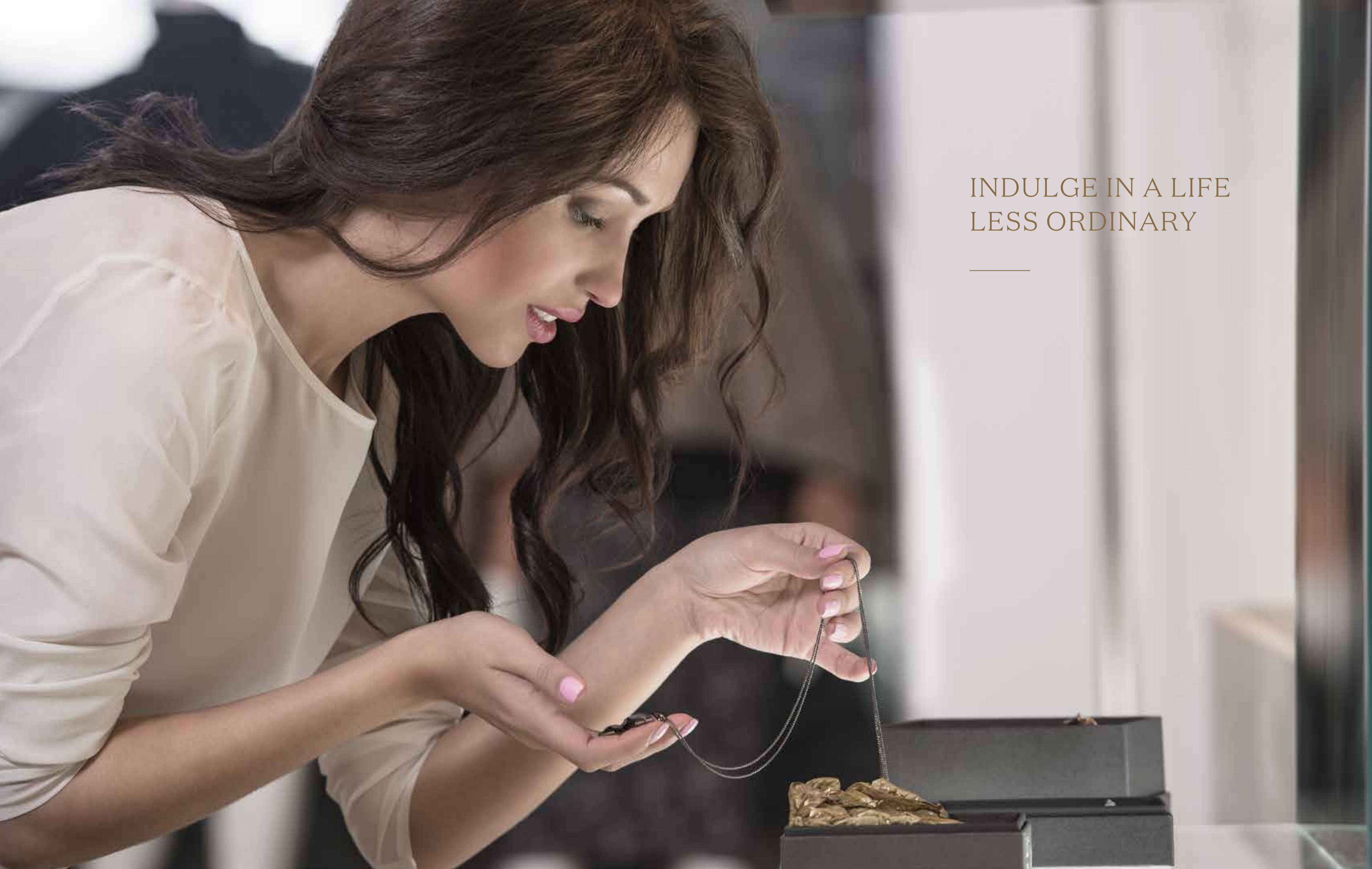


EXACTLY WHERE YOU ARE SUPPOSED TO BE

- 2km from Burj Khalifa and Downtown Dubai
- 6km from Meydan Racecourse, The Meydan and The Meydan One Mall
- 3km from Dubai International Financial Centre
- 4km from Dubai World Trade Centre

W I L T O N
— TERRACES I —





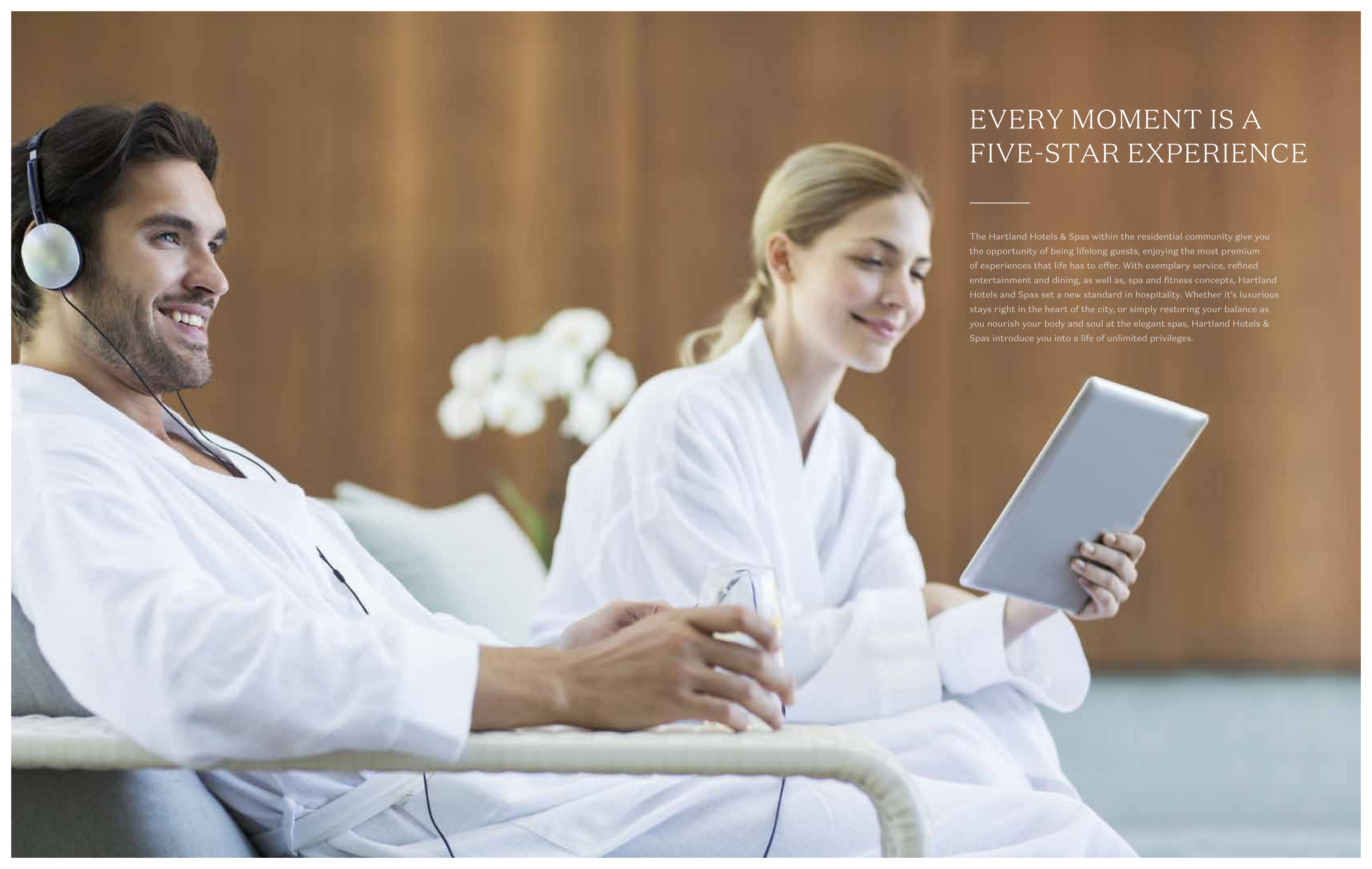
INDULGE IN A LIFE
LESS ORDINARY

A BENCHMARK FOR LIFESTYLE EXPERIENCES

Alongside MBR City and Downtown Dubai, is the Dubai Water Canal, a 3.2km waterway extending from the Creek to Business Bay, all the way to the Arabian Gulf. Lined with trendy hotels, restaurants and high-end retail options, the Dubai Water Canal promises an unparalleled experience to its residents.

MBR City brings you the best of fashion, luxury, dining and entertainment offerings, designed to complement your distinguished lifestyle. Hartland Square and Hartland Boulevard is the place to be for the most coveted fashion, luxury and retail brands. Whereas, The Walk is where you will find trendy cafes and ultra-sophisticated restaurants, serving the finest of cuisines, overlooking the well-designed water features that line the community. Fitness enthusiasts can visit the Hartland Club which includes a state-of-the-art gymnasium, a swimming pool as well as outdoor game courts where you can get in shape, unwind and relax.



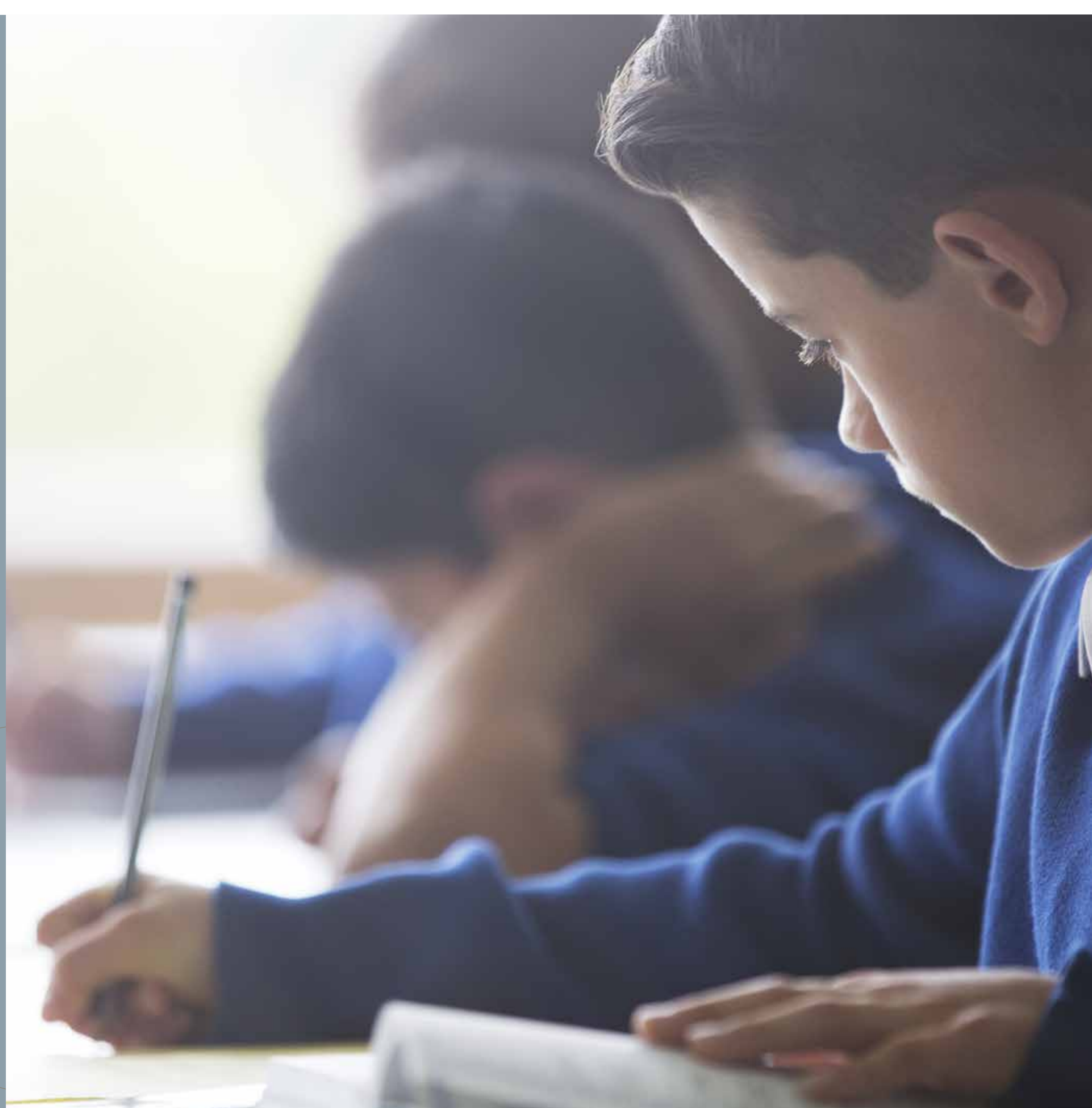


EVERY MOMENT IS A FIVE-STAR EXPERIENCE

The Hartland Hotels & Spas within the residential community give you the opportunity of being lifelong guests, enjoying the most premium of experiences that life has to offer. With exemplary service, refined entertainment and dining, as well as, spa and fitness concepts, Hartland Hotels and Spas set a new standard in hospitality. Whether it's luxurious stays right in the heart of the city, or simply restoring your balance as you nourish your body and soul at the elegant spas, Hartland Hotels & Spas introduce you into a life of unlimited privileges.

BECAUSE SUCCESS STARTS YOUNG

A well-thought-out, all-inclusive residential community built on delivering the finest in every aspect of life, MBR City is dedicated to giving its residents a holistic experience. Hartland International School is a leading institution designed with the purpose of giving your children a stimulating and encouraging environment, where they can learn, excel, achieve and grow.



LIFE AS IT SHOULD BE



EXCLUSIVITY, FOR THOSE WHO
PREFER NOTHING LESS.

W I L T O N
— TERRACES I —



UNIQUE

EXPANSIVE

MODERN

A PLACE WITHOUT EQUAL

Two distinctive, 15-storey towers nestled within the tranquility of MBR City. Welcome to Wilton Terraces I. Designed by the award-winning architectural firm Perkins+Wills, the two stunning towers are interconnected by a single podium at the base, creating a distinguishing exterior that is unmistakably unique. Featuring 140 bespoke one and two bedroom residences offering the finest of facilities and a wealth of amenities, these elegant homes craft a lifestyle of extraordinary comfort and convenience.

Created with a focus on community living, Wilton Terraces I offers plenty of opportunities for families to connect and grow. Striking the perfect balance between the indoors and outdoors, each home overlooks the lush green gardens interspersed with public squares and elegant water features within the community. To put it simply, this is where modern architecture and nature come together, to create an exceptional living experience.



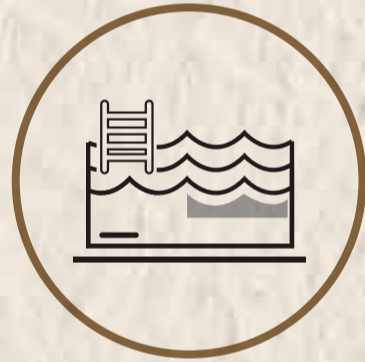
A GLIMPSE INTO WILTON TERRACES I



15 LEVELS



GYM



SWIMMING
POOL



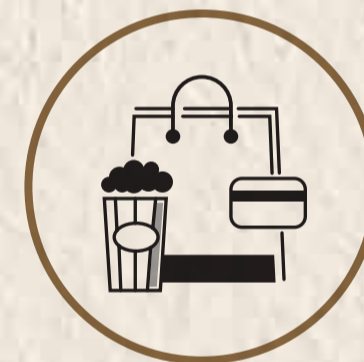
CHILDREN'S PLAY
AREA



KID'S SWIMMING
POOL



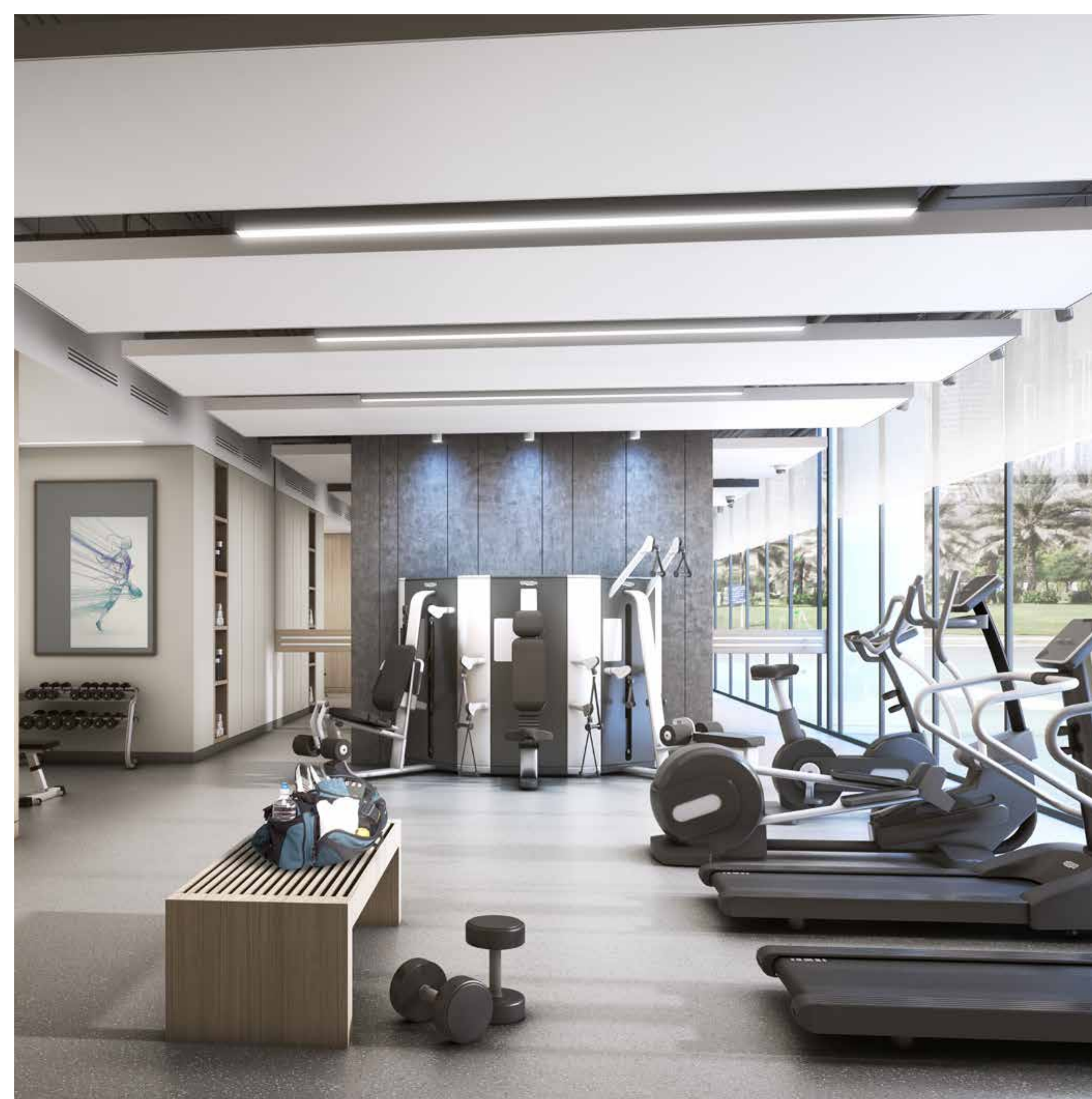
BARBEQUE
AREA



RETAIL &
ENTERTAINMENT
VENUES



COMMUNITY
LIVING



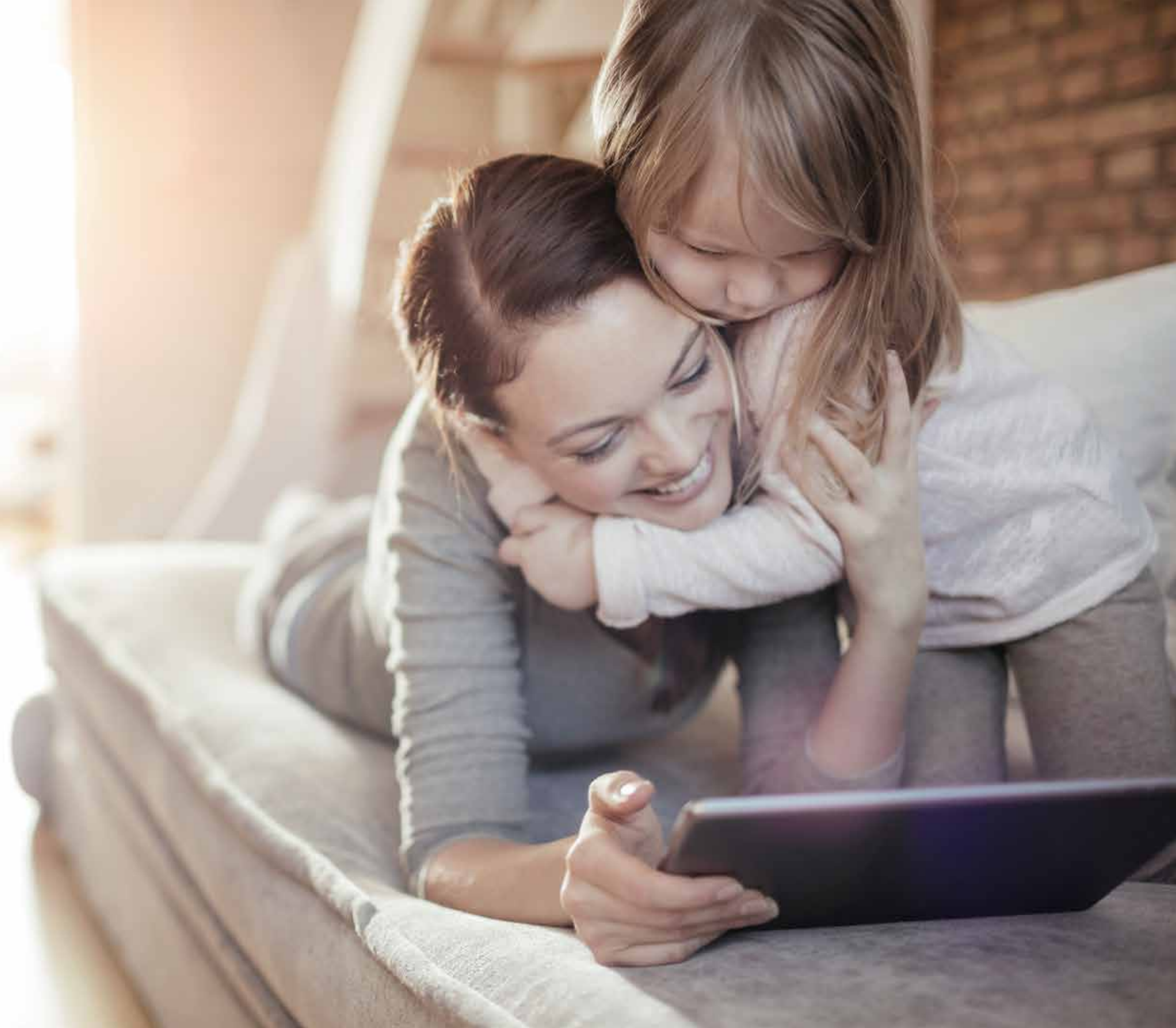
LIFE BEYOND COMPARE

Wilton Terraces I has been designed to elevate the lifestyles of individuals and families who will call it home. Between the two towers is a well-appointed recreational space, conceptualised to offer the most premium of leisure facilities in an atmosphere designed for families to thrive.

Take a dip in the glistening waters of the swimming pool, keep fit at the state-of-the-art gymnasium or take turns at the grill in the barbeque area, while you entertain a few friends. Children can take their first swimming lessons at the kid's pool, engage in activities at the indoor children's play area or connect with the outdoors at the beautifully landscaped gardens and parks surrounding the towers.



LIFE AT ITS FINEST





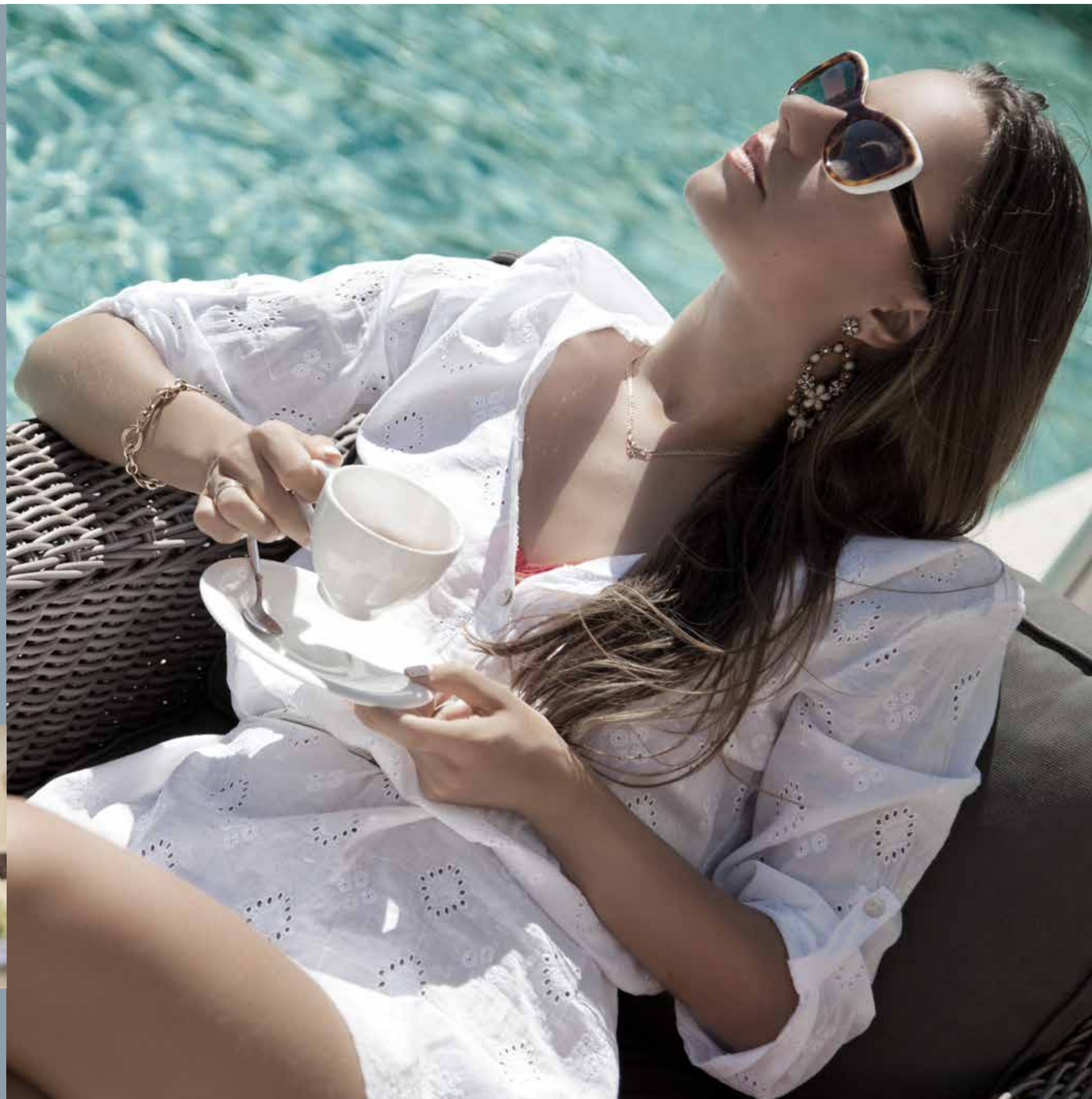
A SENSE OF BELONGING

Conceptualised to give its distinguished residents a real sense of community, Wilton Terraces I creates an atmosphere where young families can connect, share and grow. This is where you can make time for what matters most in life. Nestled within the community of MBR City, the two towers are surrounded by plenty of outdoor spaces including play areas where children can engage in interesting activities as well as beautifully landscaped gardens and parks that serve as ideal settings for family picnics and intimate gatherings.

A PLACE TO UNWIND

A unique living experience where life finds the perfect balance, Wilton Terraces I has been conceptualised to be fully integrated into the natural landscape within the community, making the beauty of the splendid surrounding scenery, undoubtedly its own.

Stroll through the lush, expansive grounds within the residential community or enjoy quiet moments of reflection as you pass by the elegant water features. Being surrounded by spectacular views, relaxing at the spa, enjoying dinners at world-class cafes and restaurants, and making time for your favourite sport at the Clubhouse are only a part of the exclusive physical and sensory experiences that come with living at Wilton Terraces I. Simply put, there is so much more to get out of life – just a few steps outside your door.



EXQUISITE FROM EVERY ANGLE



ELEGANCE IS IN
THE DETAILS



INSPIRING IN EVERY WAY

Each apartment at Wilton Terraces I has been conceptualised with spatial generosity and transparency to allow a seamless connection between indoor and outdoor spaces. With expansive views of the surroundings, each home has been crafted to create an impeccably thoughtful space, entirely adaptable to its resident's personal taste.

The apartments also come fitted with separate laundry cabinets, built-in wardrobes and cabinets in the bathroom all with flexible shelves to offer maximum usage capacity. The welcoming heart of the home, the kitchen is lined with custom cabinetry and polished countertops, furnished with a fully integrated state-of-the-art refrigerator and signature sinks and fixtures. Crafted to exceed the most demanding expectations, these luxury homes are the very embodiment of uncompromising excellence and unsurpassed elegance.



ARTISANAL

CONTEMPORARY

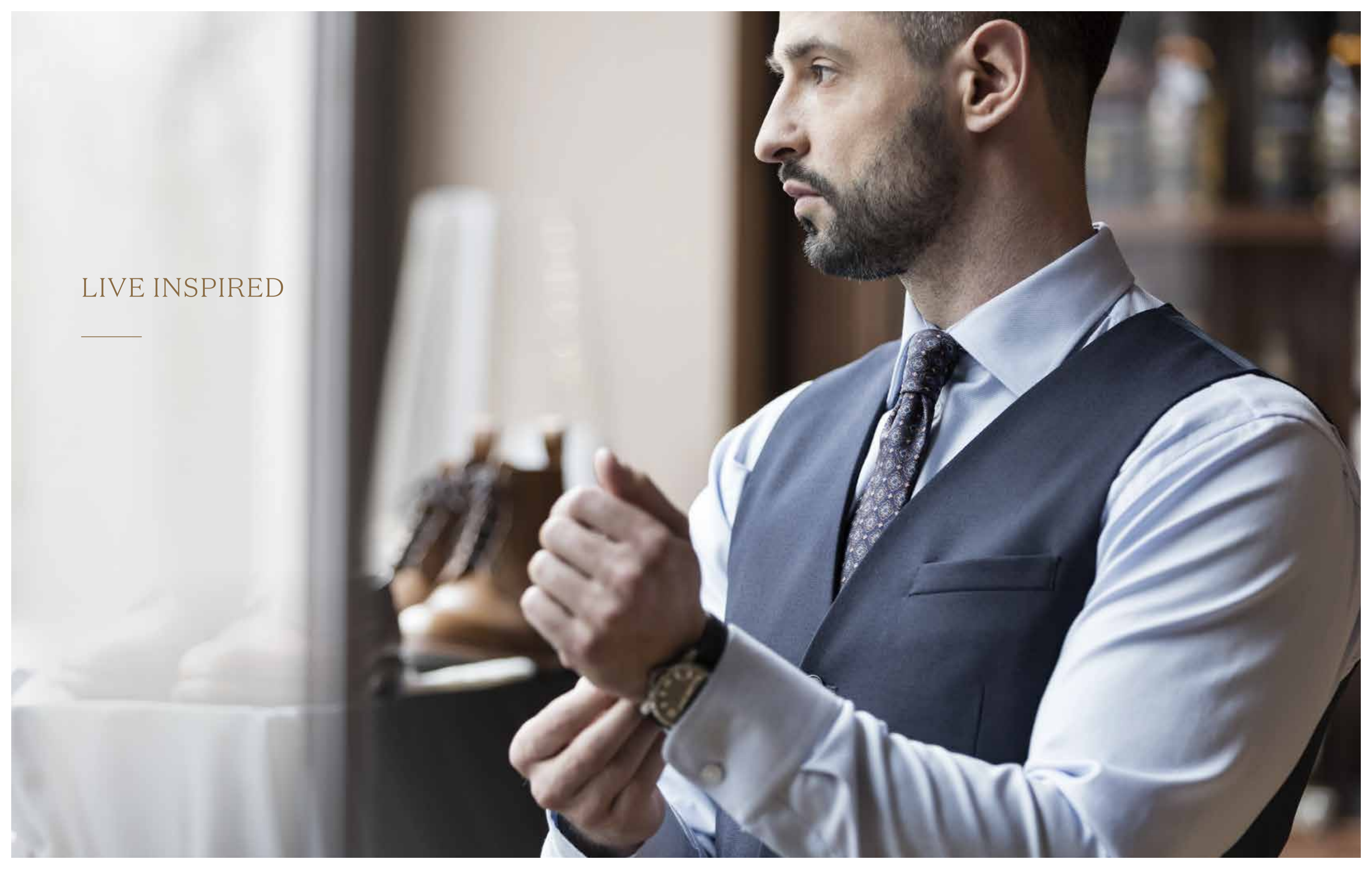
EVOCATIVE

THE MODERN EXPRESSION OF A TIMELESS ERA

Influenced by the rich textures and patterns prominent from the Silk Road period, Wilton Terraces I is a brilliant reimagination that blends classical elements with contemporary design, creating the perfect setting for modern living. Within the two towers, the lobby areas and public spaces are a nuanced interpretation of the period, with every detail connected to the storied past with utmost subtlety. At the intersection of tradition and modernity, understated yet elegant. It's what makes the experience at Wilton Terraces I, truly unique.



LIVE INSPIRED





To arrange a private viewing of the vignette of the show apartment, or for more information, please contact us at:


ELLINGTON

16th Floor, Burlington Tower
Business Bay, Dubai, UAE
P.O. Box 117500

800 8288 (TOLL FREE)
+971 4 278 0888
info@ellingtongroup.com

DISCLAIMER: DRAWINGS AND IMAGES ARE FOR ILLUSTRATIVE PURPOSES ONLY.
INFORMATION IS SUBJECT TO CHANGE WITHOUT NOTICE.

