



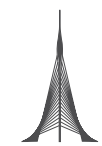
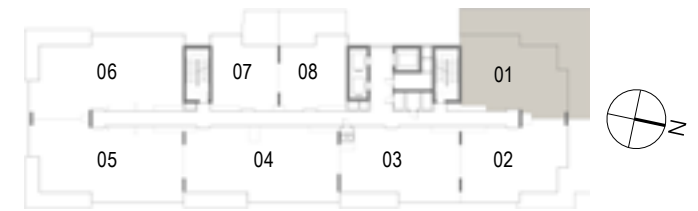
FLOOR
PLANS

DUBAI CREEK
HARBOUR
THE COVE

Building 03
2 BEDROOM
UNIT 01/ LEVEL GF

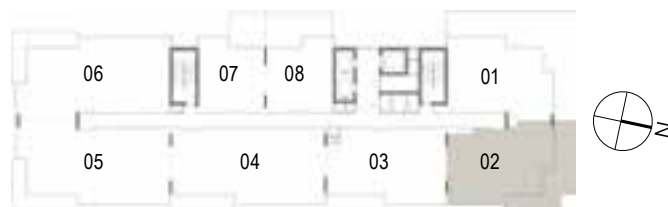


Suite Area	105.33 Sqm. / 1133.76 Sqft.
Terrace Area	82.13 Sqm. / 884.04 Sqft.
Total Area	187.46 Sqm. / 2017.80 Sqft.



1. All dimensions are in imperial and metric, and measured to structural elements and exclude wall finishes and construction tolerances. 2. All materials, dimensions, and drawings are approximate only. 3. Information is subject to change without notice, at developer's absolute discretion. 4. Actual area may vary from the stated area. 5. Drawings not to scale. 6. All images used are for illustrative purposes only and do not represent the actual size, features, specifications, fittings, and furnishings. 7. The developer reserves the right to make revisions/alterations, at its absolute discretion, without any liability whatsoever.

Building 03
2 BEDROOM
UNIT 02/ LEVEL GF

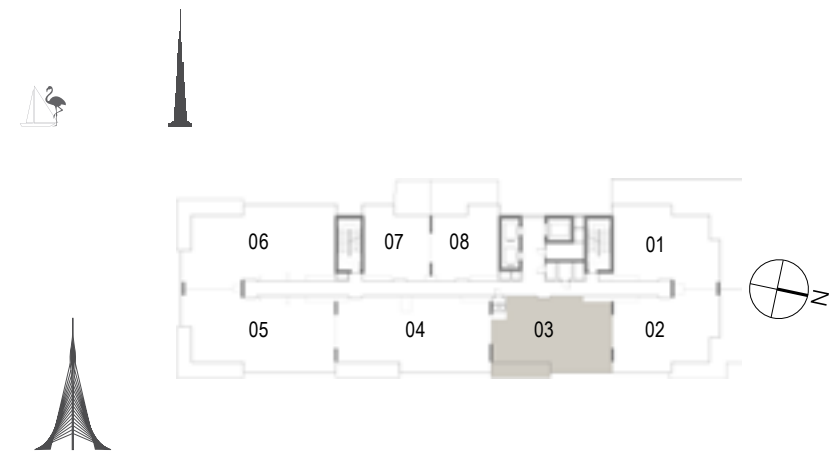


Suite Area	105.04 Sqm. / 1130.64 Sqft.
Terrace Area	38.85 Sqm. / 418.18 Sqft.
Total Area	143.89 Sqm. / 1548.82 Sqft.

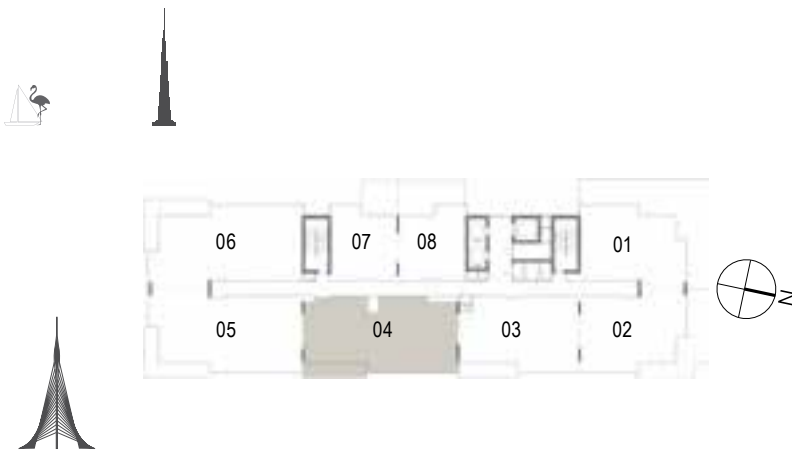
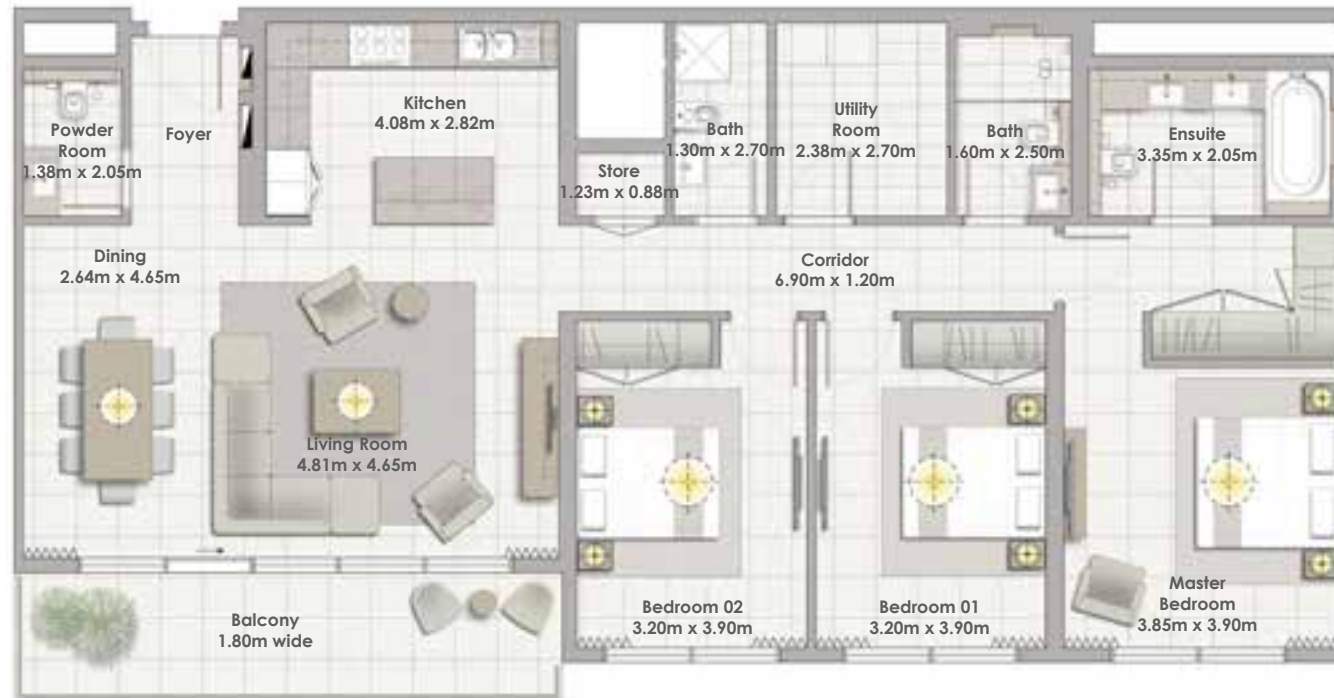
Building 03
2 BEDROOM
UNIT 03/ LEVEL GF



Suite Area	112.14 Sqm. / 1207.06 Sqft.
Balcony Area	13.04 Sqm. / 140.36 Sqft.
Total Area	125.18 Sqm. / 1347.43 Sqft.



Building 03
3 BEDROOM
UNIT 04/ LEVEL GF

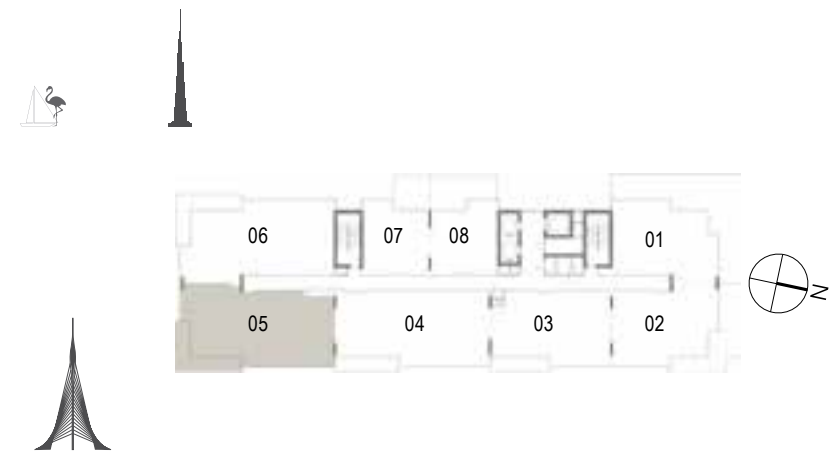


Suite Area	149.14 Sqm. / 1605.33 Sqft.
Balcony Area	14.03 Sqm. / 151.02 Sqft.
Total Area	163.17 Sqm. / 1756.35 Sqft.

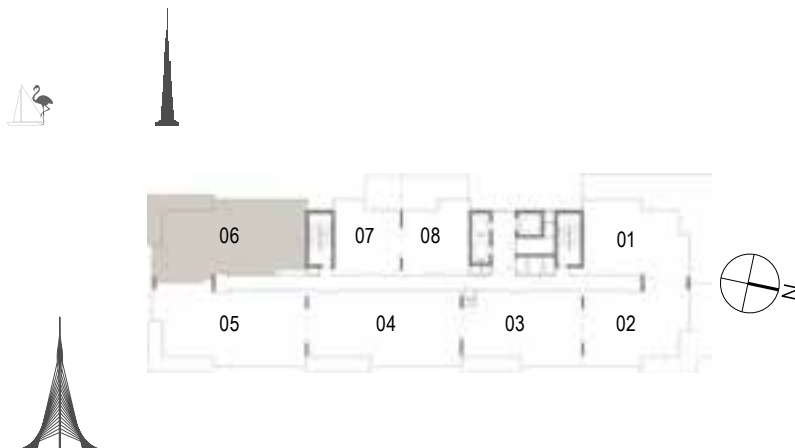
Building 03
3 BEDROOM
UNIT 05/ LEVEL GF



Suite Area	152.21 Sqm. / 1638.37 Sqft.
Balcony Area	22.33 Sqm. / 240.36 Sqft.
Total Area	174.54 Sqm. / 1878.73 Sqft.



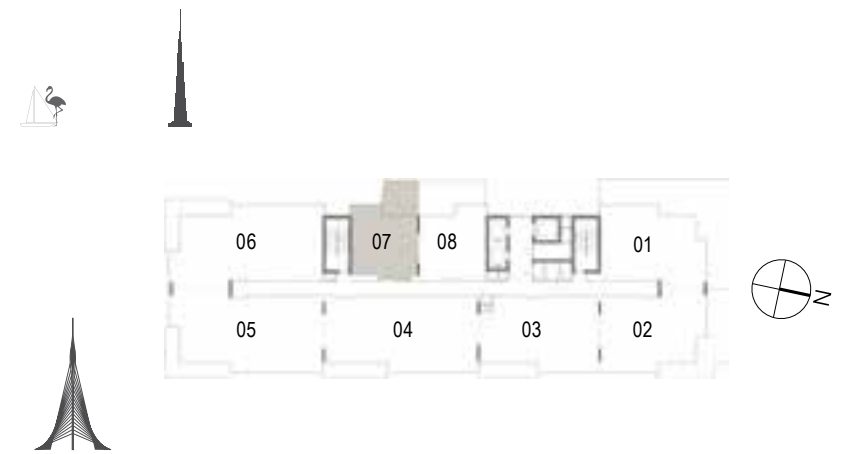
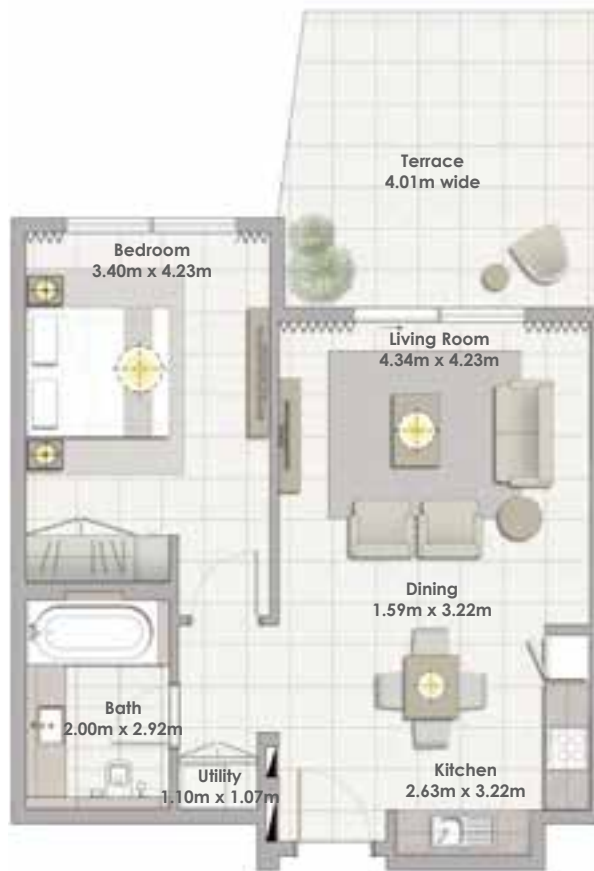
Building 03
3 BEDROOM
UNIT 06/ LEVEL GF



Suite Area	152.59 Sqm. / 1642.47 Sqft.
Balcony Area	22.33 Sqm. / 240.36 Sqft.
Total Area	174.92 Sqm. / 1882.82 Sqft.

DUBAI CREEK
HARBOUR
THE COVE

Building 03
1 BEDROOM
UNIT 07/ LEVEL GF



Suite Area	63.75 Sqm. / 686.20 Sqft.
Terrace Area	19.18 Sqm. / 206.45 Sqft.
Total Area	82.93 Sqm. / 892.65 Sqft.



1. All dimensions are in imperial and metric, and measured to structural elements and exclude wall finishes and construction tolerances. 2. All materials, dimensions, and drawings are approximate only. 3. Information is subject to change without notice, at developer's absolute discretion. 4. Actual area may vary from the stated area. 5. Drawings not to scale. 6. All images used are for illustrative purposes only and do not represent the actual size, features, specifications, fittings, and furnishings. 7. The developer reserves the right to make revisions/alterations, at its absolute discretion, without any liability whatsoever.

DUBAI CREEK
HARBOUR
THE COVE

Building 03
1 BEDROOM
UNIT 08/ LEVEL GF



Suite Area	64.44 Sqm. / 693.63 Sqft.
Terrace Area	30.66 Sqm. / 330.02 Sqft.
Total Area	95.10 Sqm. / 1023.65 Sqft.

1. All dimensions are in imperial and metric, and measured to structural elements and exclude wall finishes and construction tolerances. 2. All materials, dimensions, and drawings are approximate only. 3. Information is subject to change without notice, at developer's absolute discretion. 4. Actual area may vary from the stated area. 5. Drawings not to scale. 6. All images used are for illustrative purposes only and do not represent the actual size, features, specifications, fittings, and furnishings. 7. The developer reserves the right to make revisions/alterations, at its absolute discretion, without any liability whatsoever.

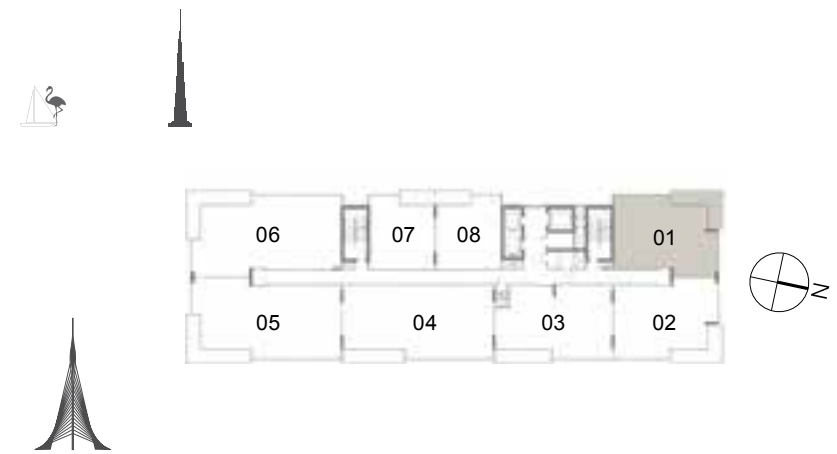


DUBAI CREEK
HARBOUR
THE COVE

Building 03
2 BEDROOM
UNIT 01/ LEVELS 01-05

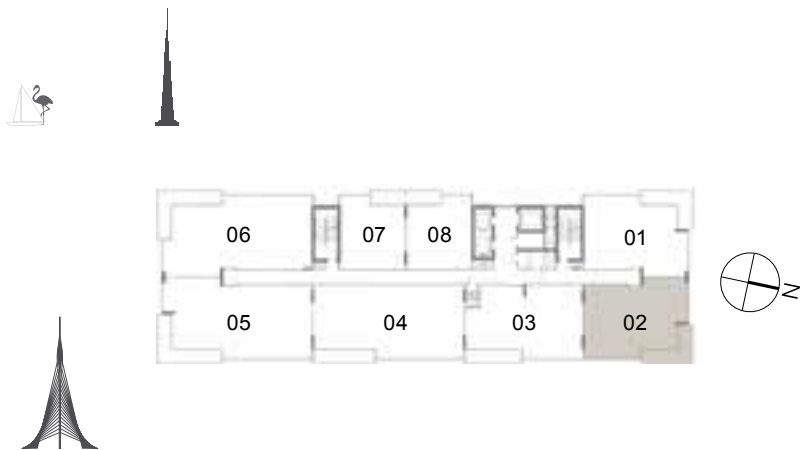


Suite Area	105.33 Sqm. / 1133.76 Sqft.
Balcony Area	17.00 Sqm. / 182.99 Sqft.
Total Area	122.33 Sqm. / 1316.75 Sqft.



1. All dimensions are in imperial and metric, and measured to structural elements and exclude wall finishes and construction tolerances. 2. All materials, dimensions, and drawings are approximate only. 3. Information is subject to change without notice, at developer's absolute discretion. 4. Actual area may vary from the stated area. 5. Drawings not to scale. 6. All images used are for illustrative purposes only and do not represent the actual size, features, specifications, fittings, and furnishings. 7. The developer reserves the right to make revisions/alterations, at its absolute discretion, without any liability whatsoever.

Building 03
2 BEDROOM
UNIT 02/ LEVELS 01-05



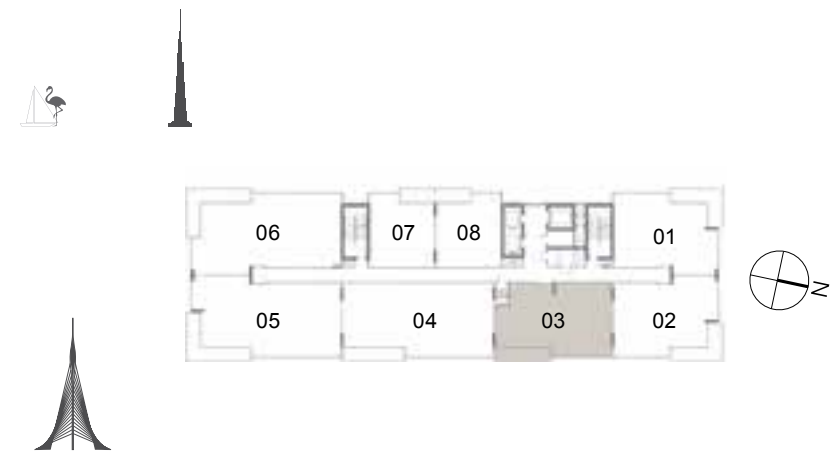
Suite Area	105.04 Sqm. / 1130.64 Sqft.
Balcony Area	17.00 Sqm. / 182.99 Sqft.
Total Area	122.04 Sqm. / 1313.63 Sqft.

DUBAI CREEK
HARBOUR
THE COVE

Building 03
2 BEDROOM
UNIT 03/ LEVELS 01-05

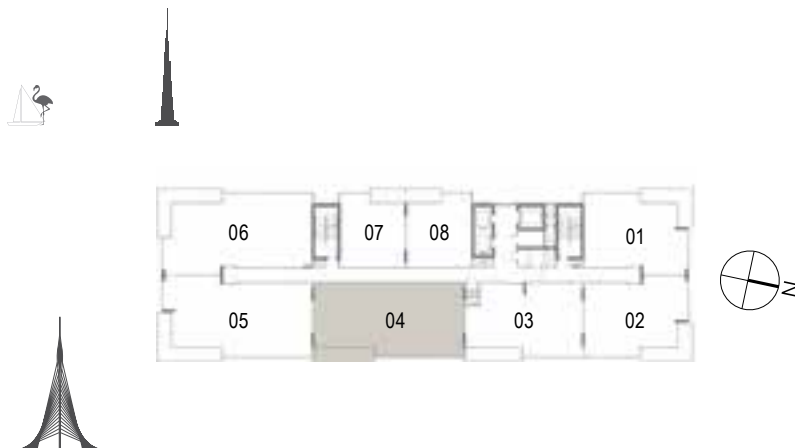
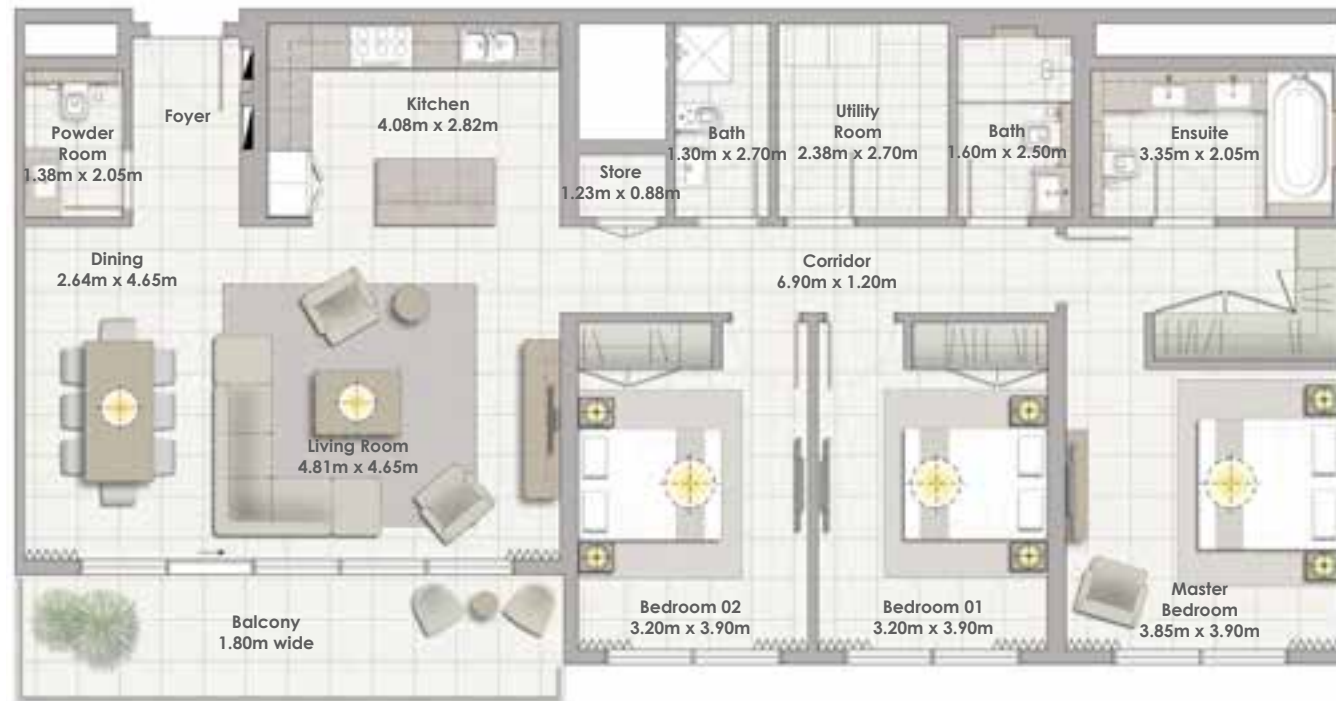


Suite Area	112.14 Sqm. / 1207.06 Sqft.
Balcony Area	13.04 Sqm. / 140.36 Sqft.
Total Area	125.18 Sqm. / 1347.43 Sqft.



1. All dimensions are in imperial and metric, and measured to structural elements and exclude wall finishes and construction tolerances. 2. All materials, dimensions, and drawings are approximate only. 3. Information is subject to change without notice, at developer's absolute discretion. 4. Actual area may vary from the stated area. 5. Drawings not to scale. 6. All images used are for illustrative purposes only and do not represent the actual size, features, specifications, fittings, and furnishings. 7. The developer reserves the right to make revisions/alterations, at its absolute discretion, without any liability whatsoever.

Building 03
3 BEDROOM
UNIT 04/ LEVELS 01-05



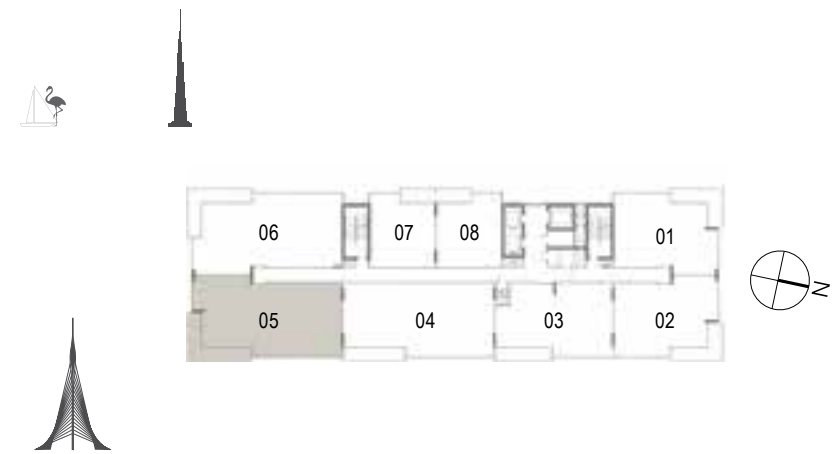
Suite Area	149.14 Sqm. / 1605.33 Sqft.
Balcony Area	14.03 Sqm. / 151.02 Sqft.
Total Area	163.17 Sqm. / 1756.35 Sqft.

DUBAI CREEK
HARBOUR
THE COVE

Building 03
3 BEDROOM
UNIT 05/ LEVELS 01-05

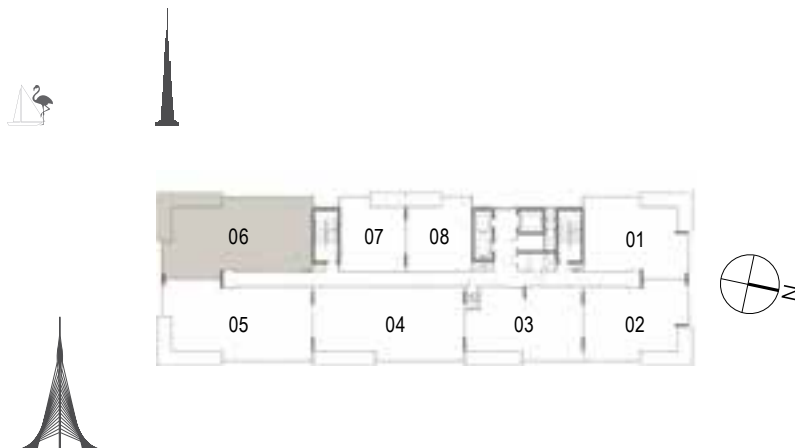


Suite Area	152.21 Sqm. / 1638.37 Sqft.
Balcony Area	22.33 Sqm. / 240.36 Sqft.
Total Area	174.54 Sqm. / 1878.73 Sqft.



1. All dimensions are in imperial and metric, and measured to structural elements and exclude wall finishes and construction tolerances. 2. All materials, dimensions, and drawings are approximate only. 3. Information is subject to change without notice, at developer's absolute discretion. 4. Actual area may vary from the stated area. 5. Drawings not to scale. 6. All images used are for illustrative purposes only and do not represent the actual size, features, specifications, fittings, and furnishings. 7. The developer reserves the right to make revisions/alterations, at its absolute discretion, without any liability whatsoever.

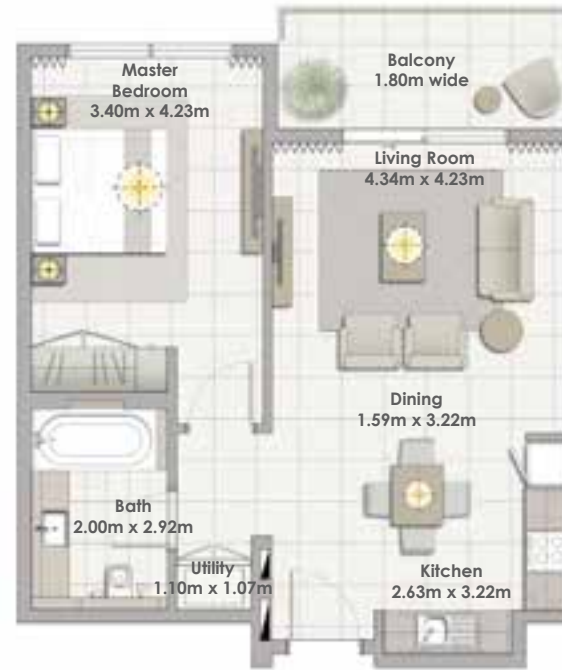
Building 03
3 BEDROOM
UNIT 06/ LEVELS 01-05



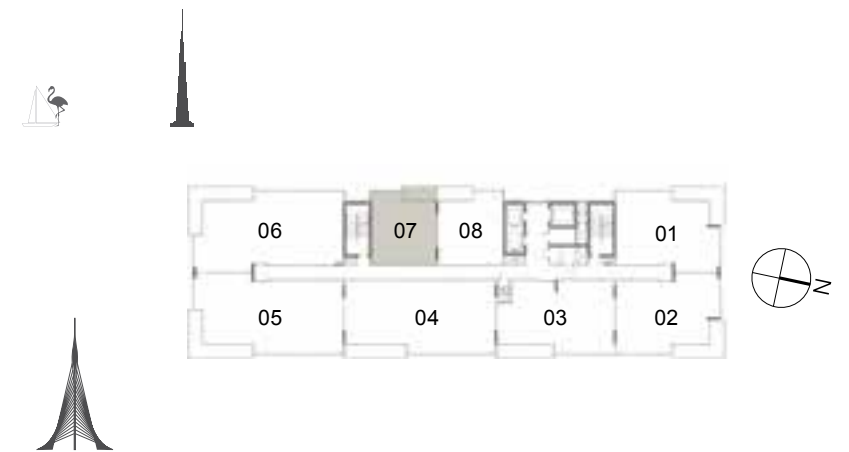
Suite Area	152.59 Sqm. / 1642.47 Sqft.
Balcony Area	22.33 Sqm. / 240.36 Sqft.
Total Area	174.92 Sqm. / 1882.82 Sqft.

DUBAI CREEK
HARBOUR
THE COVE

Building 03
1 BEDROOM
UNIT 07/ LEVELS 01-05

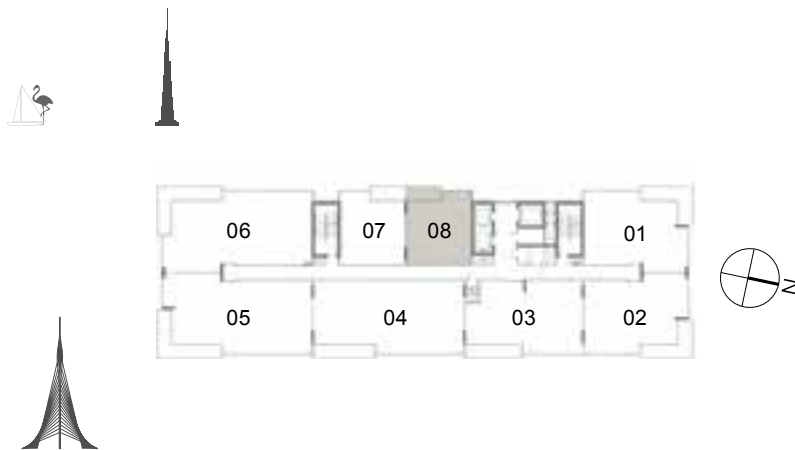


Suite Area	63.75 Sqm. / 686.20 Sqft.
Balcony Area	8.09 Sqm. / 87.08 Sqft.
Total Area	71.84 Sqm. / 773.28 Sqft.



1. All dimensions are in imperial and metric, and measured to structural elements and exclude wall finishes and construction tolerances. 2. All materials, dimensions, and drawings are approximate only. 3. Information is subject to change without notice, at developer's absolute discretion. 4. Actual area may vary from the stated area. 5. Drawings not to scale. 6. All images used are for illustrative purposes only and do not represent the actual size, features, specifications, fittings, and furnishings. 7. The developer reserves the right to make revisions/alterations, at its absolute discretion, without any liability whatsoever.

Building 03
1 BEDROOM
UNIT 08/ LEVELS 01-05



Suite Area	64.44 Sqm. / 693.63 Sqft.
Balcony Area	8.09 Sqm. / 87.08 Sqft.
Total Area	72.53 Sqm. / 780.71 Sqft.