



DUBAI CREEK  
HARBOUR  
THE COVE

DUBAI CREEK HARBOUR



YOUR RESORT HOME  
IN A WORLD CLASS CITY



A THRIVING  
WATERFRONT  
COMMUNITY





*serio Borheim*

SUPREME STYLE  
AND SERENITY



DAZZLING DUBAI  
SKYLINE



A DELUXE  
CREEKSIDE HAVEN







LUSCIOUS  
LIVING SPACES







RELAX AND PLAY,  
EVERY DAY



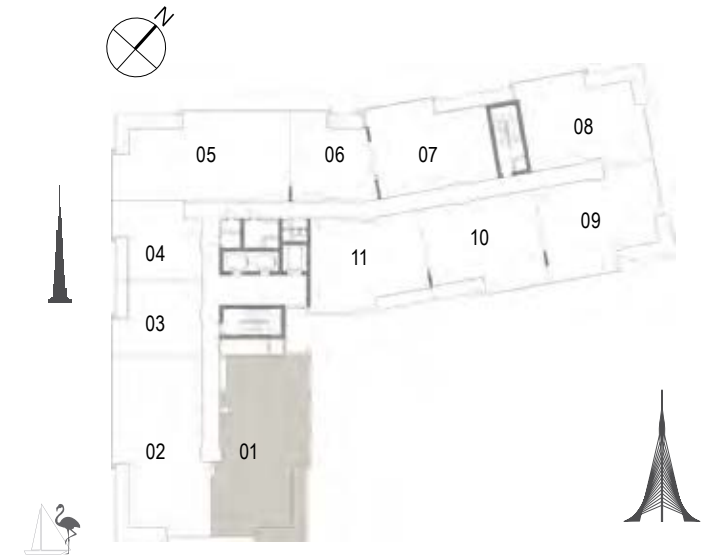


FLOOR  
PLANS

BUILDING 2

DUBAI CREEK  
HARBOUR  
THE COVE

Building 02  
3 BEDROOM  
UNIT 01/ LEVELS 02-06



Suite Area	157.80 Sqm. / 1698.55 Sqft.
Balcony Area	18.31 Sqm. / 197.09 Sqft.
Total Area	176.11 Sqm. / 1895.63 Sqft.



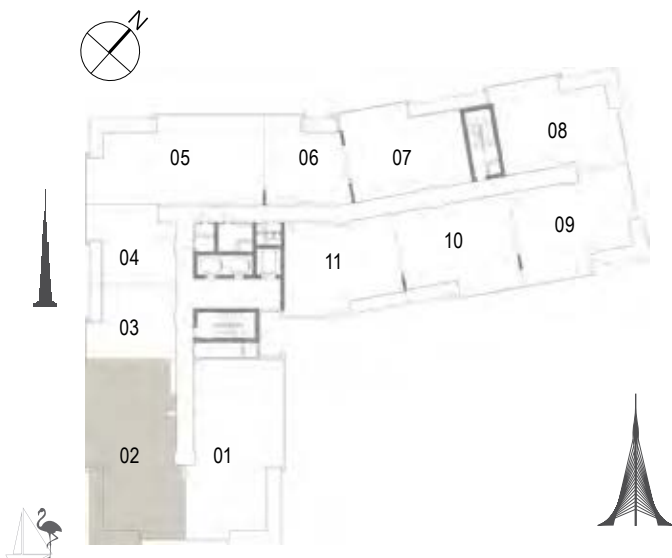
1. All dimensions are in imperial and metric, and measured to structural elements and exclude wall finishes and construction tolerances. 2. All materials, dimensions, and drawings are approximate only. 3. Information is subject to change without notice, at developer's absolute discretion. 4. Actual area may vary from the stated area. 5. Drawings not to scale. 6. All images used are for illustrative purposes only and do not represent the actual size, features, specifications, fittings, and furnishings. 7. The developer reserves the right to make revisions/alterations, at its absolute discretion, without any liability whatsoever.



Building 02  
3 BEDROOM  
UNIT 02/ LEVELS 02-06



Suite Area	157.80 Sqm. / 1698.55 Sqft.
Balcony Area	18.31 Sqm. / 197.09 Sqft.
Total Area	176.11 Sqm. / 1895.63 Sqft.



1. All dimensions are in imperial and metric, and measured to structural elements and exclude wall finishes and construction tolerances. 2. All materials, dimensions, and drawings are approximate only. 3. Information is subject to change without notice, at developer's absolute discretion. 4. Actual area may vary from the stated area. 5. Drawings not to scale. 6. All images used are for illustrative purposes only and do not represent the actual size, features, specifications, fittings, and furnishings. 7. The developer reserves the right to make revisions/alterations, at its absolute discretion, without any liability whatsoever.

DUBAI CREEK  
HARBOUR  
THE COVE

Building 02  
1 BEDROOM  
UNIT 03/ LEVELS 01-06

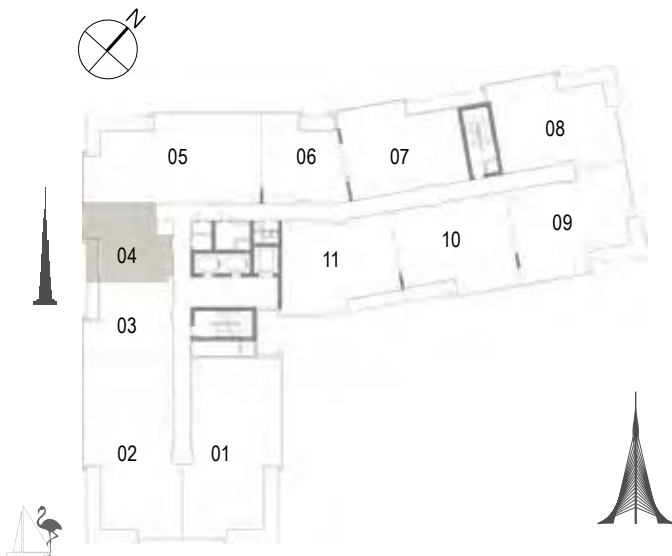


Suite Area	62.16 Sqm. / 669.08 Sqft.
Balcony Area	6.38 Sqm. / 68.67 Sqft.
Total Area	68.54 Sqm. / 737.76 Sqft.



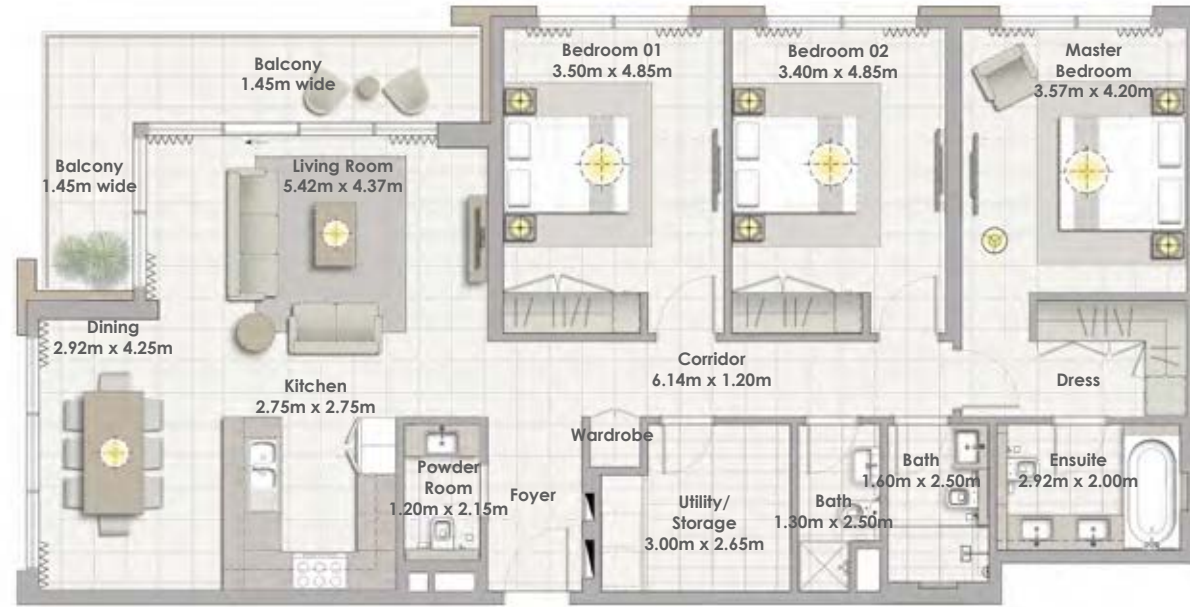
1. All dimensions are in imperial and metric, and measured to structural elements and exclude wall finishes and construction tolerances. 2. All materials, dimensions, and drawings are approximate only. 3. Information is subject to change without notice, at developer's absolute discretion. 4. Actual area may vary from the stated area. 5. Drawings not to scale. 6. All images used are for illustrative purposes only and do not represent the actual size, features, specifications, fittings, and furnishings. 7. The developer reserves the right to make revisions/alterations, at its absolute discretion, without any liability whatsoever.

Building 02  
1 BEDROOM  
UNIT 04/ LEVELS 01-06

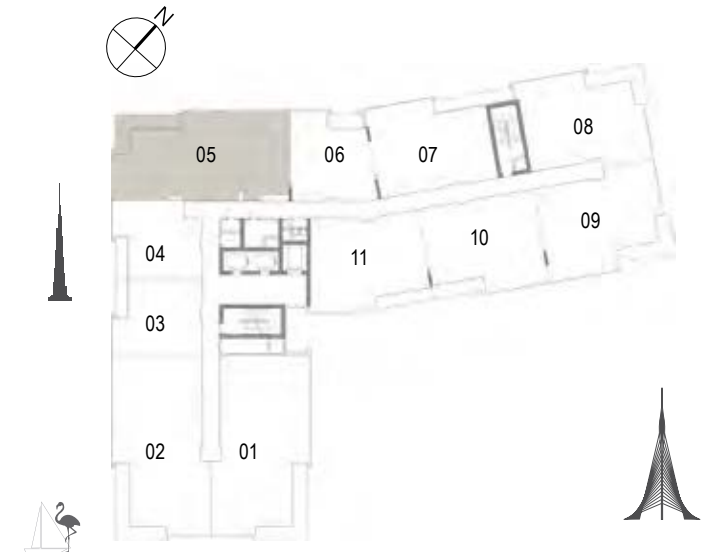


Suite Area	60.44 Sqm. / 650.57 Sqft.
Balcony Area	7.02 Sqm. / 75.56 Sqft.
Total Area	67.46 Sqm. / 726.13 Sqft.

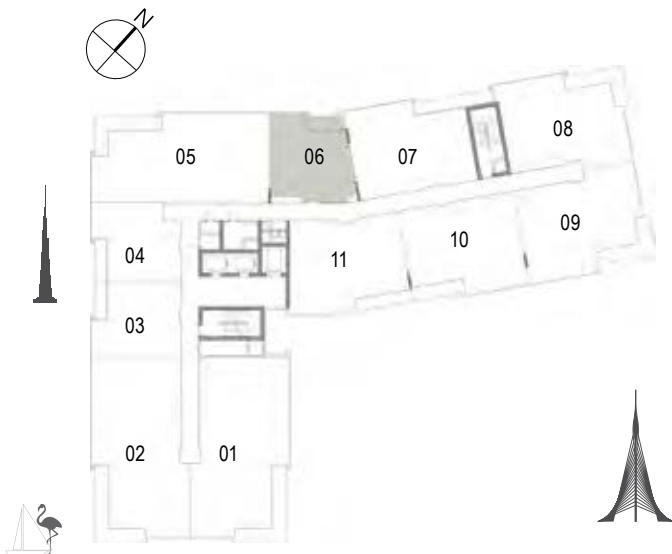
Building 02  
3 BEDROOM  
UNIT 05/ LEVELS 01-06



Suite Area	148.24 Sqm. / 1595.64 Sqft.
Balcony Area	14.78 Sqm. / 159.09 Sqft.
Total Area	163.02 Sqm. / 1754.73 Sqft.



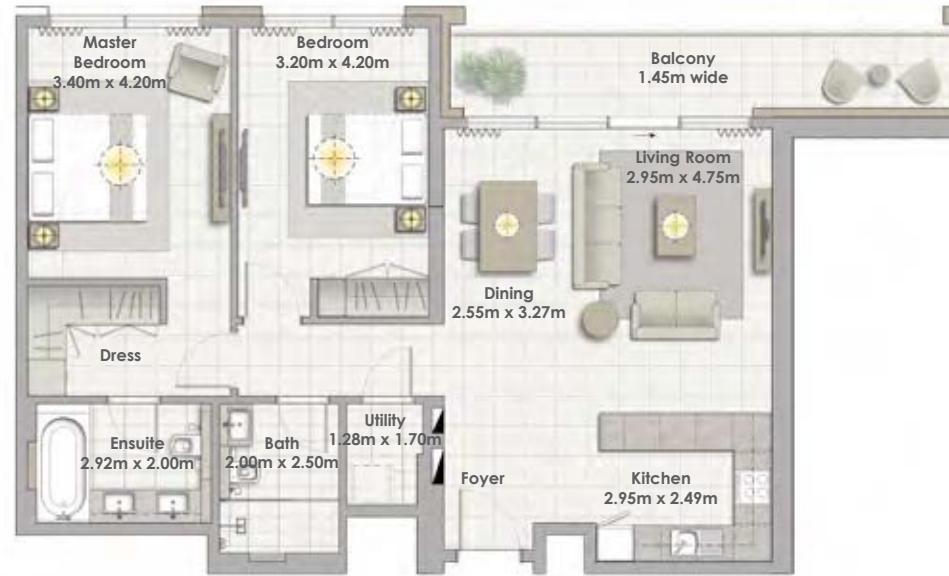
Building 02  
1 BEDROOM  
UNIT 06/ LEVELS 01-06



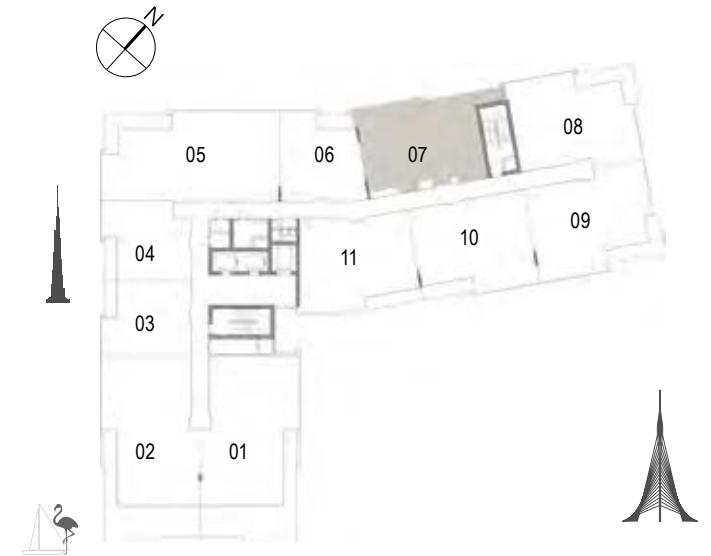
Suite Area	67.15 Sqm. / 722.80 Sqft.
Balcony Area	6.45 Sqm. / 69.43 Sqft.
Total Area	73.60 Sqm. / 792.22 Sqft.

DUBAI CREEK  
HARBOUR  
THE COVE

Building 02  
2 BEDROOM  
UNIT 07/ LEVELS 01-06

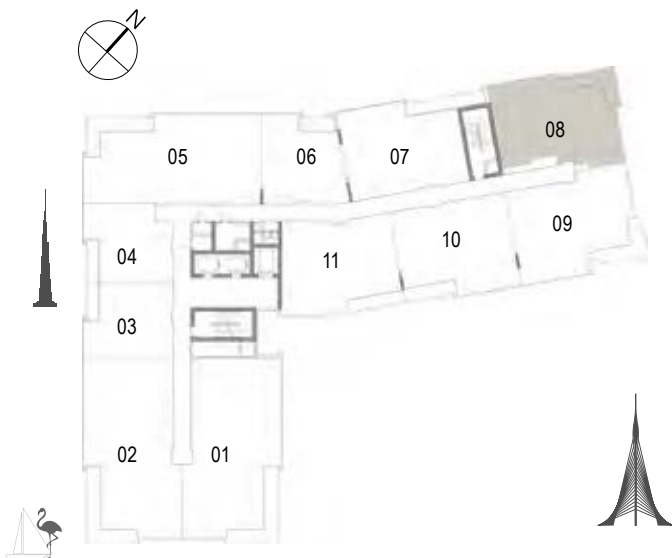


Suite Area	102.58 Sqm. / 1104.16 Sqft.
Balcony Area	13.60 Sqm. / 146.39 Sqft.
Total Area	116.18 Sqm. / 1250.55 Sqft.



1. All dimensions are in imperial and metric, and measured to structural elements and exclude wall finishes and construction tolerances. 2. All materials, dimensions, and drawings are approximate only. 3. Information is subject to change without notice, at developer's absolute discretion. 4. Actual area may vary from the stated area. 5. Drawings not to scale. 6. All images used are for illustrative purposes only and do not represent the actual size, features, specifications, fittings, and furnishings. 7. The developer reserves the right to make revisions/alterations, at its absolute discretion, without any liability whatsoever.

Building 02  
2 BEDROOM  
UNIT 08/ LEVELS 01-06



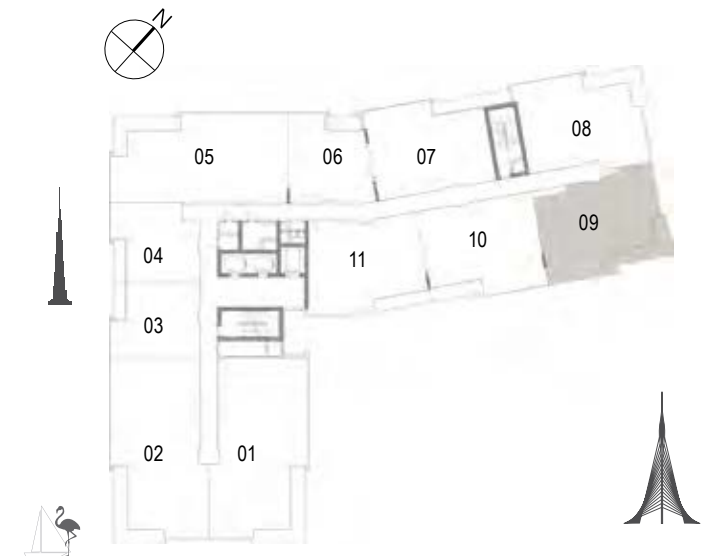
Suite Area	103.43 Sqm. / 1113.31 Sqft.
Balcony Area	13.61 Sqm. / 146.50 Sqft.
<b>Total Area</b>	<b>117.04 Sqm. / 1259.81 Sqft.</b>

DUBAI CREEK  
HARBOUR  
THE COVE

Building 02  
2 BEDROOM  
UNIT 09/ LEVELS 01-06



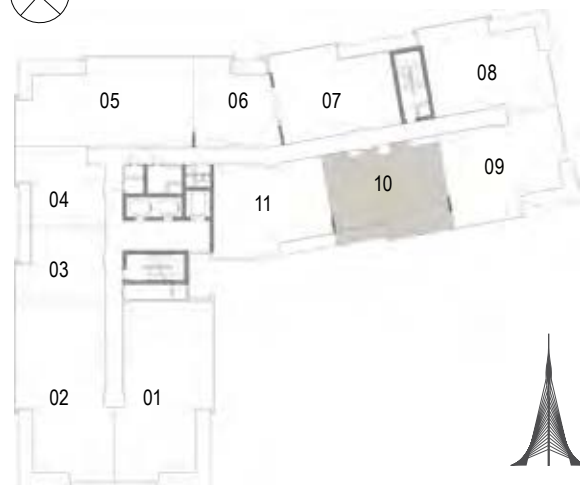
Suite Area	108.25 Sqm. / 1165.19 Sqft.
Balcony Area	13.62 Sqm. / 146.60 Sqft.
Total Area	121.87 Sqm. / 1311.80 Sqft.



1. All dimensions are in imperial and metric, and measured to structural elements and exclude wall finishes and construction tolerances. 2. All materials, dimensions, and drawings are approximate only. 3. Information is subject to change without notice, at developer's absolute discretion. 4. Actual area may vary from the stated area. 5. Drawings not to scale. 6. All images used are for illustrative purposes only and do not represent the actual size, features, specifications, fittings, and furnishings. 7. The developer reserves the right to make revisions/alterations, at its absolute discretion, without any liability whatsoever.



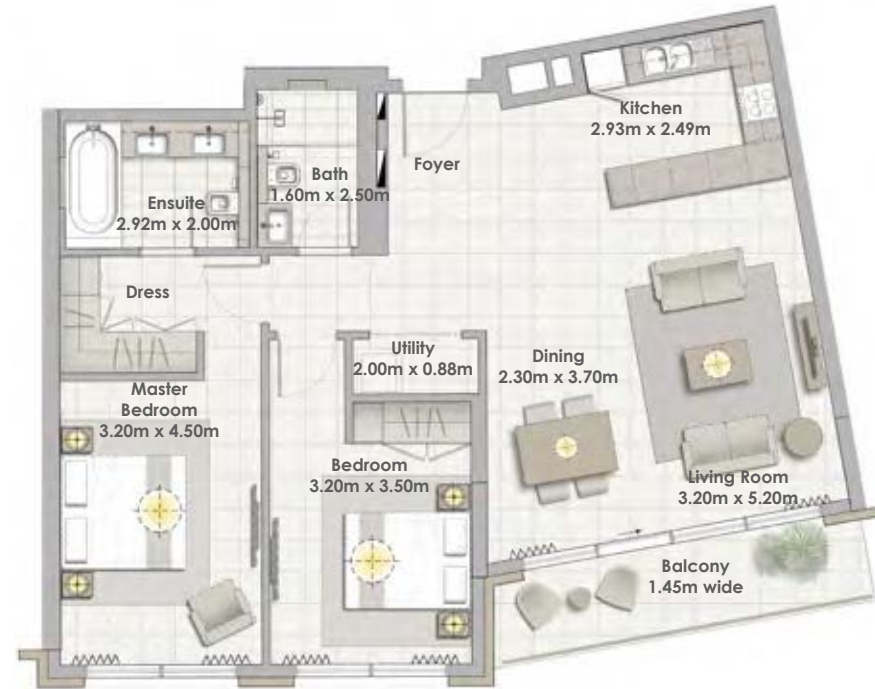
Building 02  
2 BEDROOM  
UNIT 10/ LEVELS 01-06



Suite Area	103.70 Sqm. / 1116.22 Sqft.
Balcony Area	8.52 Sqm. / 91.71 Sqft.
Total Area	112.22 Sqm. / 1207.93 Sqft.

DUBAI CREEK  
HARBOUR  
THE COVE

Building 02  
2 BEDROOM  
UNIT 11/ LEVELS 01-06



Suite Area	103.75 Sqm. / 1116.76 Sqft.
Balcony Area	9.25 Sqm. / 99.57 Sqft.
Total Area	113.00 Sqm. / 1216.32 Sqft.

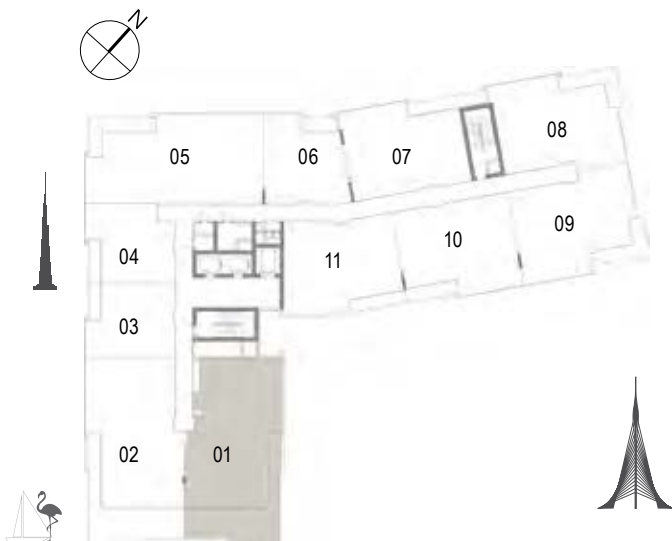


1. All dimensions are in imperial and metric, and measured to structural elements and exclude wall finishes and construction tolerances. 2. All materials, dimensions, and drawings are approximate only. 3. Information is subject to change without notice, at developer's absolute discretion. 4. Actual area may vary from the stated area. 5. Drawings not to scale. 6. All images used are for illustrative purposes only and do not represent the actual size, features, specifications, fittings, and furnishings. 7. The developer reserves the right to make revisions/alterations, at its absolute discretion, without any liability whatsoever.

Building 02  
2 BEDROOM  
UNIT 01/ LEVEL 07



Suite Area	130.17 Sqm. / 1401.14 Sqft.
Terrace Area	50.03 Sqm. / 538.52 Sqft.
<b>Total Area</b>	<b>180.20 Sqm. / 1939.66 Sqft.</b>

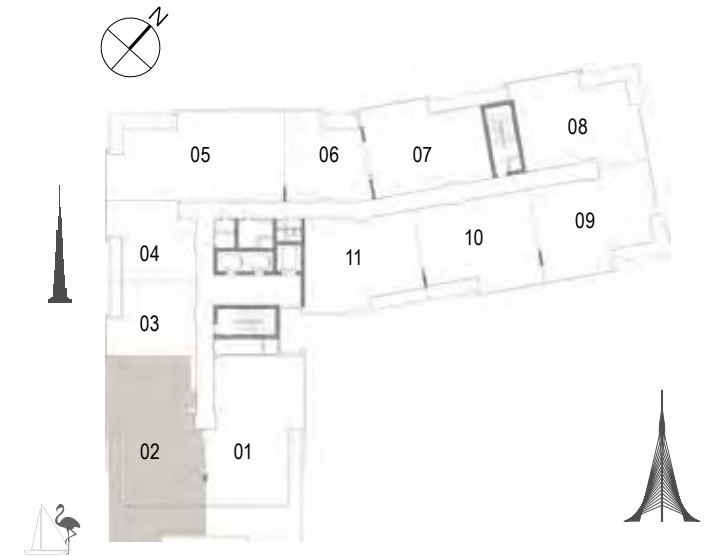


DUBAI CREEK  
HARBOUR  
THE COVE

Building 02  
2 BEDROOM  
UNIT 02/ LEVEL 07

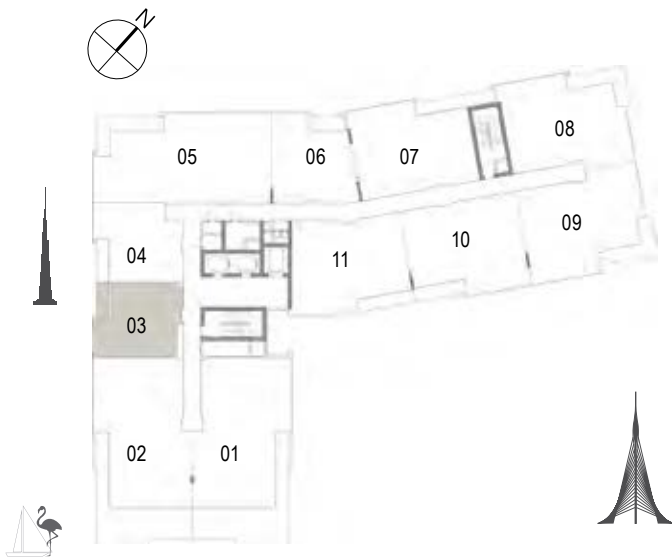


Suite Area	130.27 Sqm. / 1402.21 Sqft.
Terrace Area	50.03 Sqm. / 538.52 Sqft.
Total Area	180.30 Sqm. / 1940.73 Sqft.



1. All dimensions are in imperial and metric, and measured to structural elements and exclude wall finishes and construction tolerances. 2. All materials, dimensions, and drawings are approximate only. 3. Information is subject to change without notice, at developer's absolute discretion. 4. Actual area may vary from the stated area. 5. Drawings not to scale. 6. All images used are for illustrative purposes only and do not represent the actual size, features, specifications, fittings, and furnishings. 7. The developer reserves the right to make revisions/alterations, at its absolute discretion, without any liability whatsoever.

Building 02  
1 BEDROOM  
UNIT 03/ LEVEL 07



Suite Area	62.16 Sqm. / 669.08 Sqft.
Balcony Area	6.38 Sqm. / 68.67 Sqft.
Total Area	68.54 Sqm. / 737.76 Sqft.

DUBAI CREEK  
HARBOUR  
THE COVE

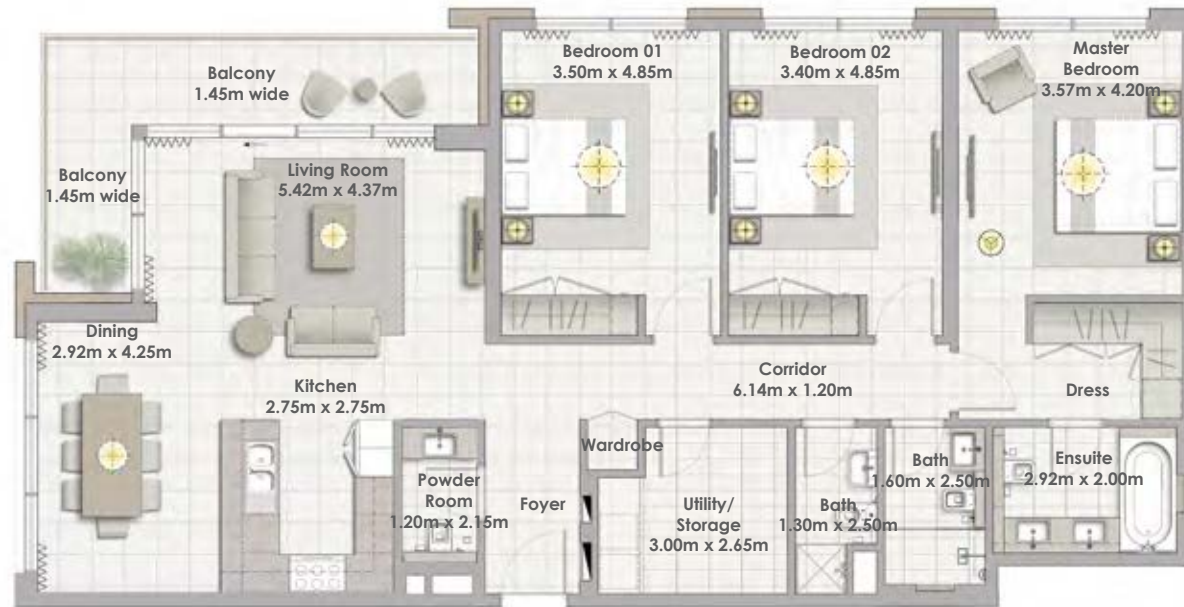
Building 02  
1 BEDROOM  
UNIT 04/ LEVEL 07



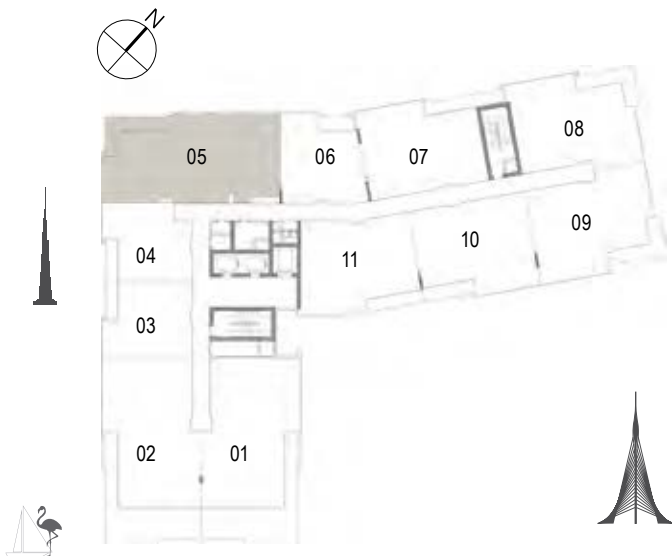
Suite Area	60.44 Sqm. / 650.57 Sqft.
Balcony Area	7.02 Sqm. / 75.56 Sqft.
Total Area	67.46 Sqm. / 726.13 Sqft.



1. All dimensions are in imperial and metric, and measured to structural elements and exclude wall finishes and construction tolerances. 2. All materials, dimensions, and drawings are approximate only. 3. Information is subject to change without notice, at developer's absolute discretion. 4. Actual area may vary from the stated area. 5. Drawings not to scale. 6. All images used are for illustrative purposes only and do not represent the actual size, features, specifications, fittings, and furnishings. 7. The developer reserves the right to make revisions/alterations, at its absolute discretion, without any liability whatsoever.



Building 02  
3 BEDROOM  
UNIT 05/ LEVEL 07



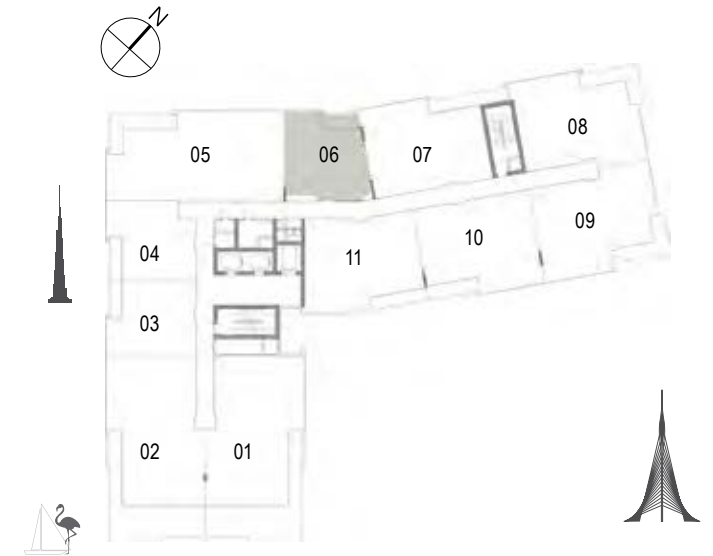
Suite Area	148.24 Sqm. / 1595.64 Sqft.
Balcony Area	14.78 Sqm. / 159.09 Sqft.
Total Area	163.02 Sqm. / 1754.73 Sqft.

DUBAI CREEK  
HARBOUR  
THE COVE

Building 02  
1 BEDROOM  
UNIT 06/ LEVEL 07



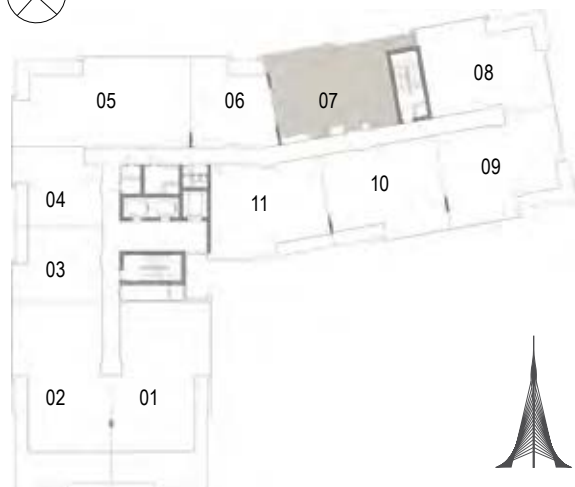
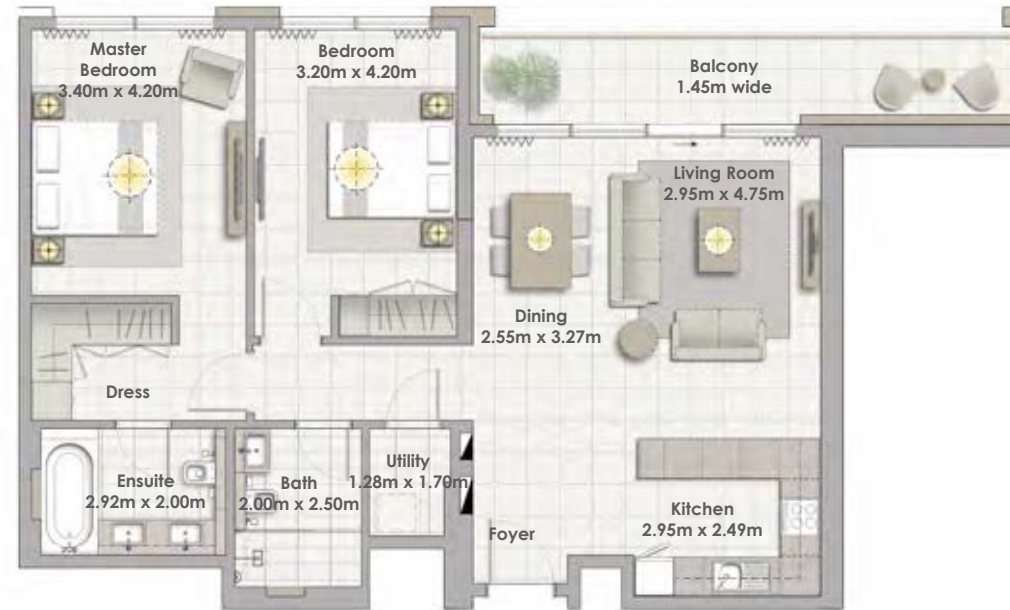
Suite Area	67.15 Sqm. / 722.80 Sqft.
Balcony Area	6.45 Sqm. / 69.43 Sqft.
Total Area	73.60 Sqm. / 792.22 Sqft.



1. All dimensions are in imperial and metric, and measured to structural elements and exclude wall finishes and construction tolerances. 2. All materials, dimensions, and drawings are approximate only. 3. Information is subject to change without notice, at developer's absolute discretion. 4. Actual area may vary from the stated area. 5. Drawings not to scale. 6. All images used are for illustrative purposes only and do not represent the actual size, features, specifications, fittings, and furnishings. 7. The developer reserves the right to make revisions/alterations, at its absolute discretion, without any liability whatsoever.



Building 02  
2 BEDROOM  
UNIT 07/ LEVEL 07



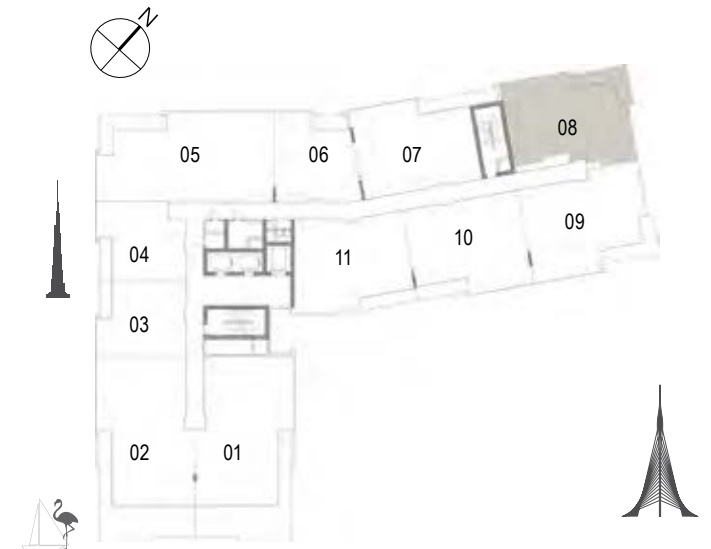
Suite Area	102.58 Sqm. / 1104.16 Sqft.
Balcony Area	13.60 Sqm. / 146.39 Sqft.
Total Area	116.18 Sqm. / 1250.55 Sqft.

DUBAI CREEK  
HARBOUR  
THE COVE

Building 02  
2 BEDROOM  
UNIT 08/ LEVEL 07



Suite Area	103.43 Sqm. / 1113.31 Sqft.
Balcony Area	13.61 Sqm. / 146.50 Sqft.
Total Area	117.04 Sqm. / 1259.81 Sqft.



1. All dimensions are in imperial and metric, and measured to structural elements and exclude wall finishes and construction tolerances. 2. All materials, dimensions, and drawings are approximate only. 3. Information is subject to change without notice, at developer's absolute discretion. 4. Actual area may vary from the stated area. 5. Drawings not to scale. 6. All images used are for illustrative purposes only and do not represent the actual size, features, specifications, fittings, and furnishings. 7. The developer reserves the right to make revisions/alterations, at its absolute discretion, without any liability whatsoever.

Building 02  
2 BEDROOM  
UNIT 09/ LEVEL 07

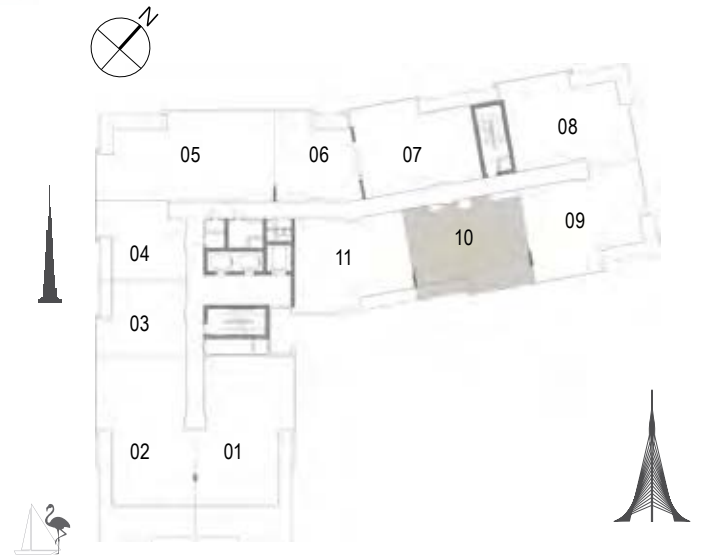


Suite Area	108.25 Sqm. / 1165.19 Sqft.
Balcony Area	13.62 Sqm. / 146.60 Sqft.
Total Area	121.87 Sqm. / 1311.80 Sqft.

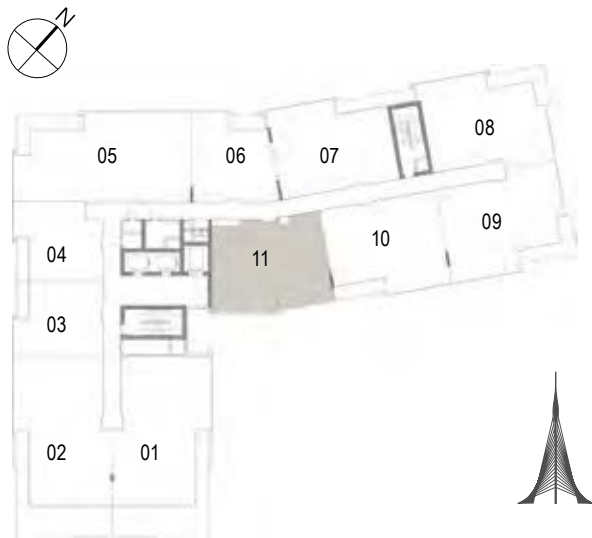
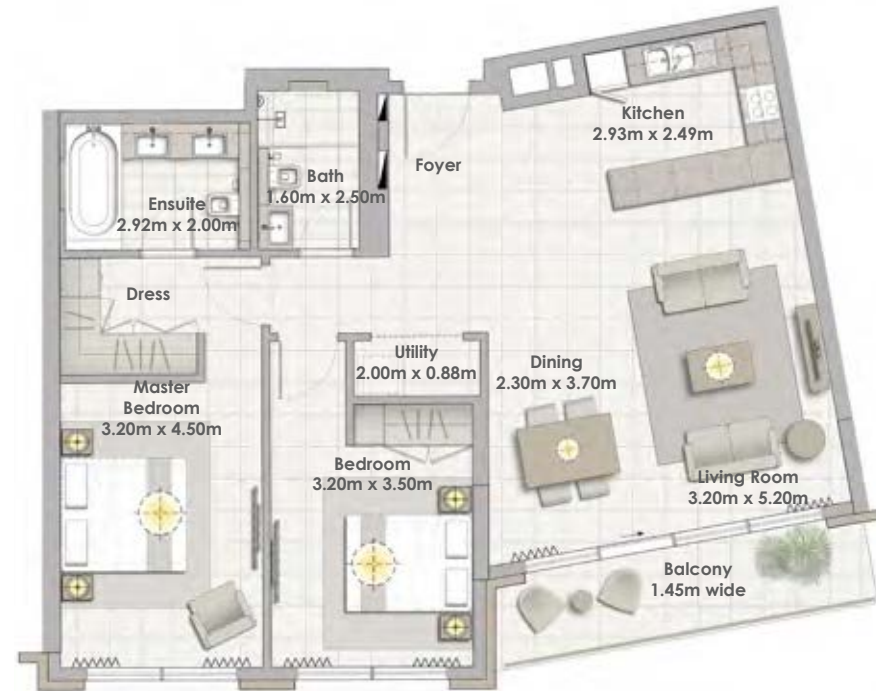
Building 02  
2 BEDROOM  
UNIT 10/ LEVEL 07



Suite Area	103.70 Sqm. / 1116.22 Sqft.
Balcony Area	8.52 Sqm. / 91.71 Sqft.
Total Area	112.22 Sqm. / 1207.93 Sqft.



Building 02  
2 BEDROOM  
UNIT 11/ LEVEL 07



Suite Area	103.75 Sqm. / 1116.76 Sqft.
Balcony Area	9.25 Sqm. / 99.57 Sqft.
Total Area	113.00 Sqm. / 1216.32 Sqft.

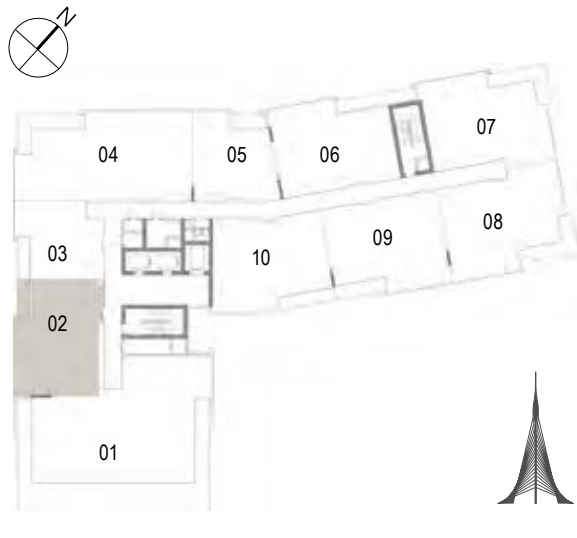
Building 02  
3 BEDROOM  
UNIT 01/ LEVEL 08



Suite Area	187.23 Sqm. / 2015.33 Sqft.
Terrace Area	84.91 Sqm. / 913.96 Sqft.
Total Area	272.14 Sqm. / 2929.29 Sqft.



Building 02  
2 BEDROOM  
UNIT 02/ LEVEL 08



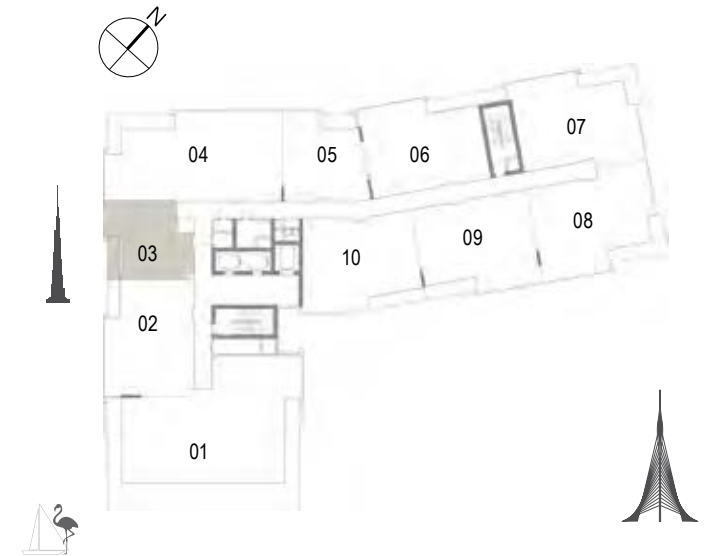
Suite Area	98.30 Sqm. / 1058.09 Sqft.
Balcony Area	6.38 Sqm. / 68.67 Sqft.
Total Area	104.68 Sqm. / 1126.77 Sqft.

DUBAI CREEK  
HARBOUR  
THE COVE

Building 02  
1 BEDROOM  
UNIT 03/ LEVEL 08

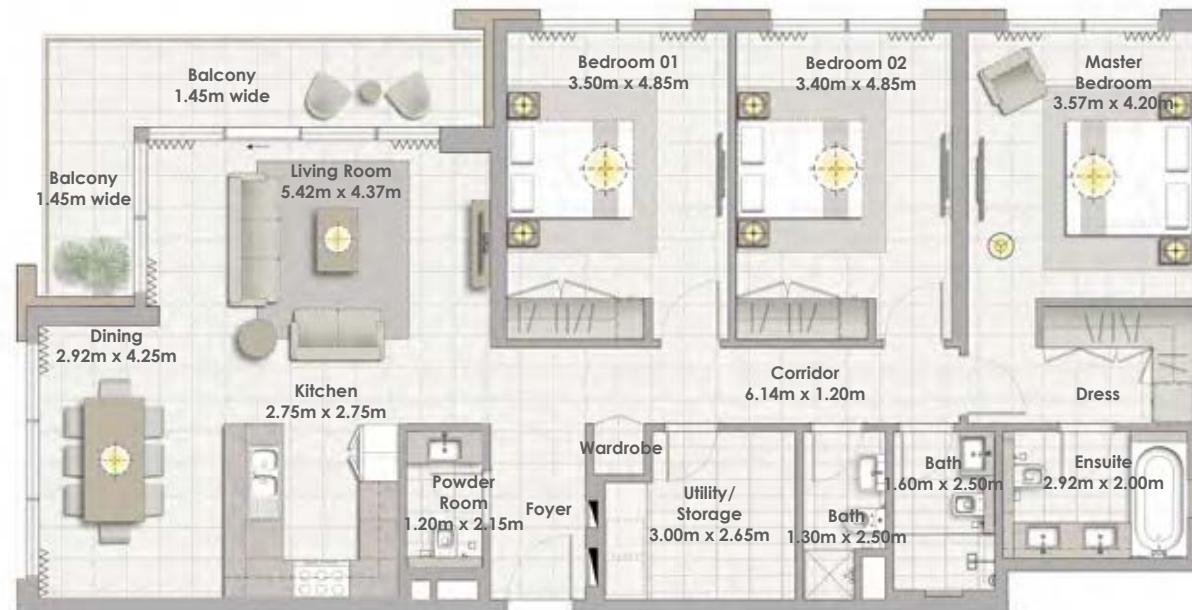


Suite Area	60.44 Sqm. / 650.57 Sqft.
Balcony Area	7.02 Sqm. / 75.56 Sqft.
Total Area	67.46 Sqm. / 726.13 Sqft.

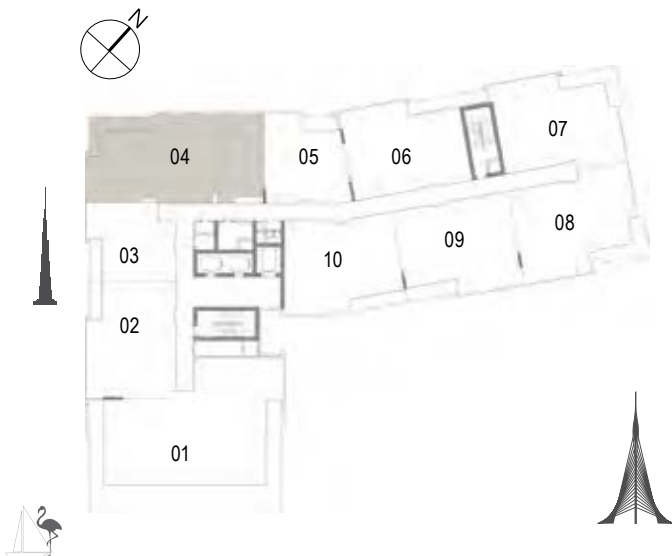


1. All dimensions are in imperial and metric, and measured to structural elements and exclude wall finishes and construction tolerances. 2. All materials, dimensions, and drawings are approximate only. 3. Information is subject to change without notice, at developer's absolute discretion. 4. Actual area may vary from the stated area. 5. Drawings not to scale. 6. All images used are for illustrative purposes only and do not represent the actual size, features, specifications, fittings, and furnishings. 7. The developer reserves the right to make revisions/alterations, at its absolute discretion, without any liability whatsoever.





Building 02  
3 BEDROOM  
UNIT 04/ LEVEL 08



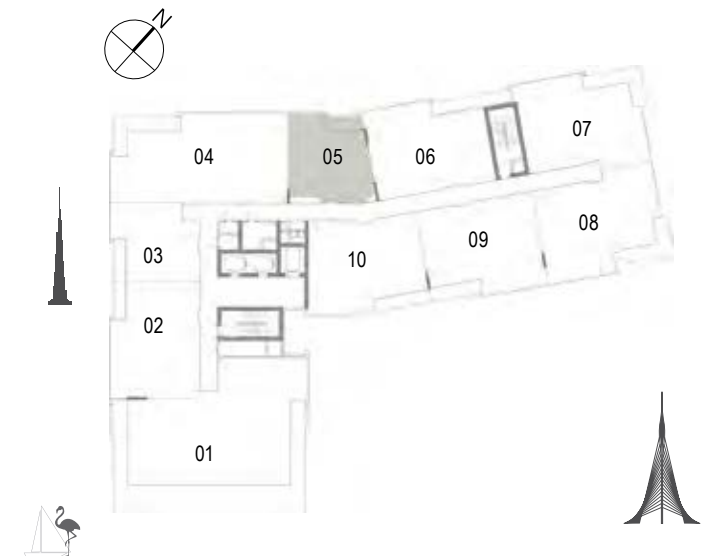
Suite Area	148.24 Sqm. / 1595.64 Sqft.
Balcony Area	14.78 Sqm. / 159.09 Sqft.
Total Area	163.02 Sqm. / 1754.73 Sqft.

DUBAI CREEK  
HARBOUR  
THE COVE

Building 02  
1 BEDROOM  
UNIT 05/ LEVEL 08



Suite Area	67.15 Sqm. / 722.80 Sqft.
Balcony Area	6.45 Sqm. / 69.43 Sqft.
Total Area	73.60 Sqm. / 792.22 Sqft.



1. All dimensions are in imperial and metric, and measured to structural elements and exclude wall finishes and construction tolerances. 2. All materials, dimensions, and drawings are approximate only. 3. Information is subject to change without notice, at developer's absolute discretion. 4. Actual area may vary from the stated area. 5. Drawings not to scale. 6. All images used are for illustrative purposes only and do not represent the actual size, features, specifications, fittings, and furnishings. 7. The developer reserves the right to make revisions/alterations, at its absolute discretion, without any liability whatsoever.

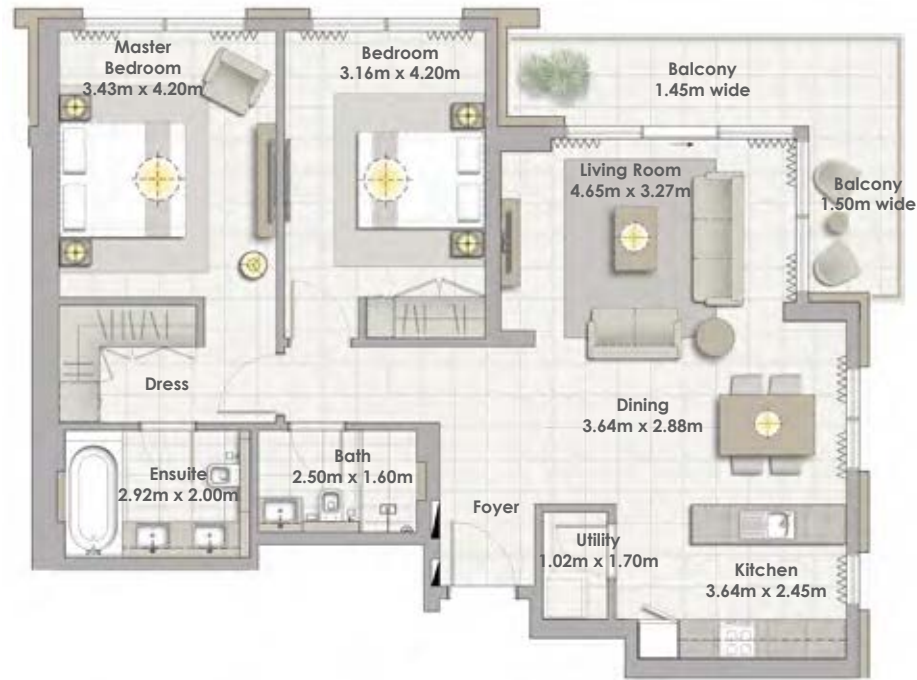
Building 02  
2 BEDROOM  
UNIT 06/ LEVEL 08



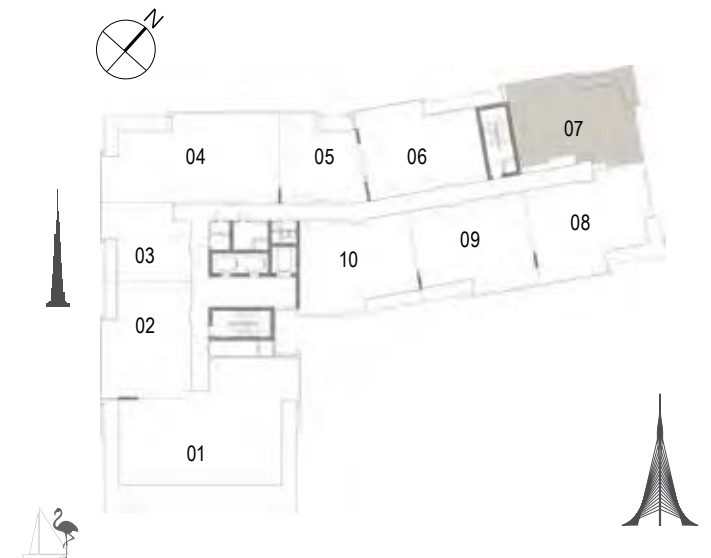
Suite Area	102.58 Sqm. / 1104.16 Sqft.
Balcony Area	13.60 Sqm. / 146.39 Sqft.
Total Area	116.18 Sqm. / 1250.55 Sqft.

DUBAI CREEK  
HARBOUR  
THE COVE

Building 02  
2 BEDROOM  
UNIT 07/ LEVEL 08



Suite Area	103.43 Sqm. / 1113.31 Sqft.
Balcony Area	13.61 Sqm. / 146.50 Sqft.
Total Area	117.04 Sqm. / 1259.81 Sqft.



1. All dimensions are in imperial and metric, and measured to structural elements and exclude wall finishes and construction tolerances. 2. All materials, dimensions, and drawings are approximate only. 3. Information is subject to change without notice, at developer's absolute discretion. 4. Actual area may vary from the stated area. 5. Drawings not to scale. 6. All images used are for illustrative purposes only and do not represent the actual size, features, specifications, fittings, and furnishings. 7. The developer reserves the right to make revisions/alterations, at its absolute discretion, without any liability whatsoever.

Building 02  
2 BEDROOM  
UNIT 08/ LEVEL 08

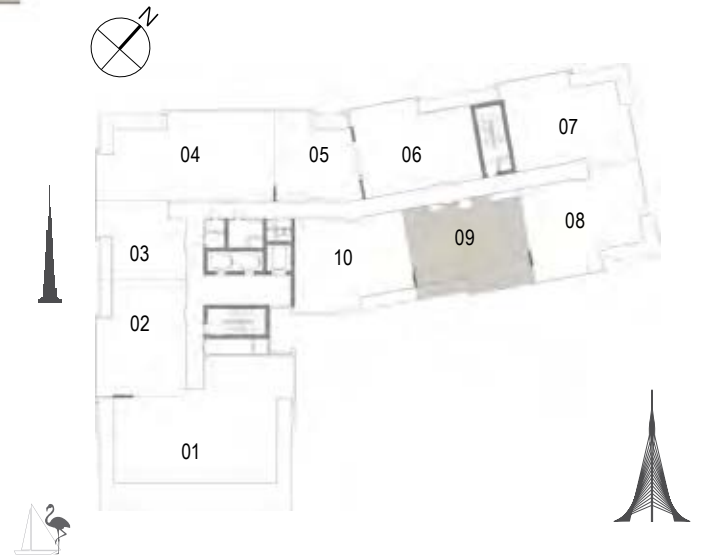


Suite Area	108.25 Sqm. / 1165.19 Sqft.
Balcony Area	13.62 Sqm. / 146.60 Sqft.
Total Area	121.87 Sqm. / 1311.80 Sqft.

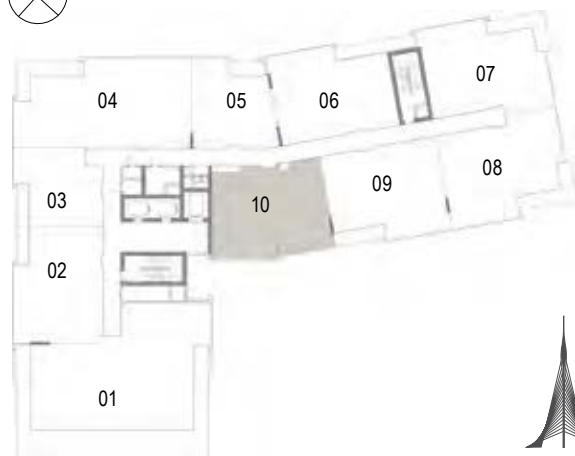
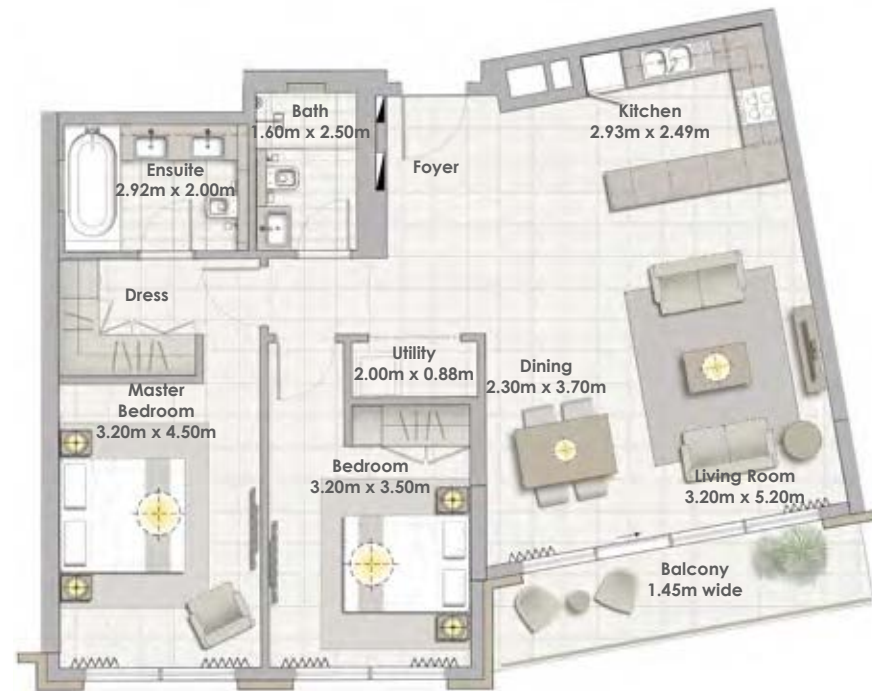
Building 02  
2 BEDROOM  
UNIT 09/ LEVEL 08



Suite Area	103.70 Sqm. / 1116.22 Sqft.
Balcony Area	8.52 Sqm. / 91.71 Sqft.
Total Area	112.22 Sqm. / 1207.93 Sqft.



Building 02  
2 BEDROOM  
UNIT 10/ LEVEL 08

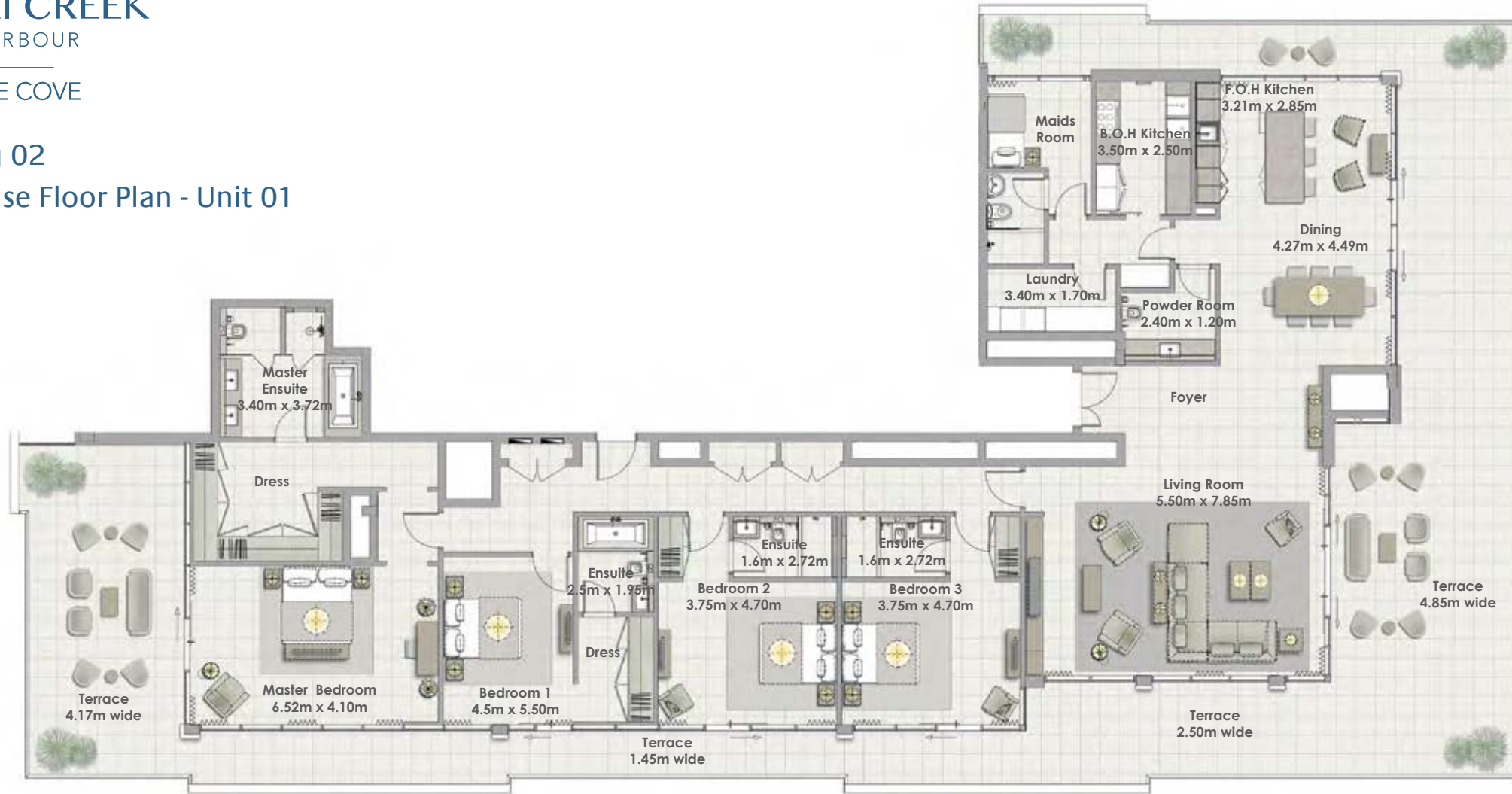


Suite Area	103.75 Sqm. / 1116.76 Sqft.
Balcony Area	9.25 Sqm. / 99.57 Sqft.
Total Area	113.00 Sqm. / 1216.32 Sqft.

1. All dimensions are in imperial and metric, and measured to structural elements and exclude wall finishes and construction tolerances. 2. All materials, dimensions, and drawings are approximate only. 3. Information is subject to change without notice, at developer's absolute discretion. 4. Actual area may vary from the stated area. 5. Drawings not to scale. 6. All images used are for illustrative purposes only and do not represent the actual size, features, specifications, fittings, and furnishings. 7. The developer reserves the right to make revisions/alterations, at its absolute discretion, without any liability whatsoever.

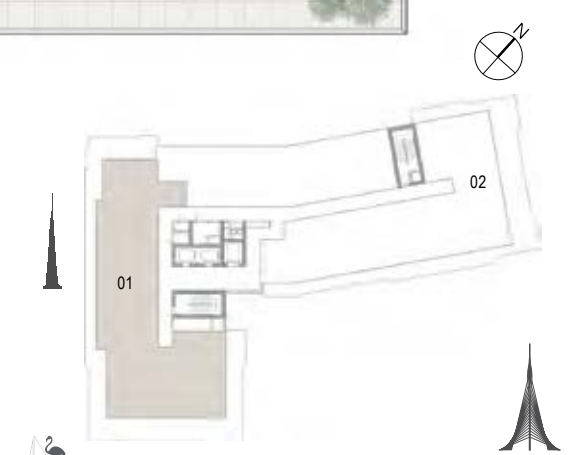
DUBAI CREEK  
HARBOUR  
THE COVE

Building 02  
Penthouse Floor Plan - Unit 01



Building 02  
4 BEDROOM  
UNIT 01/ LEVELS 09

Suite Area	315.38 Sqm. / 3394.72 Sqft.
Balcony Area	186.23 Sqm. / 2004.56Sqft.
Total Area	501.61Sqm. / 5399.28 Sqft.

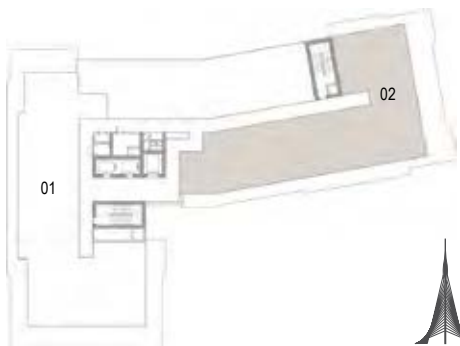
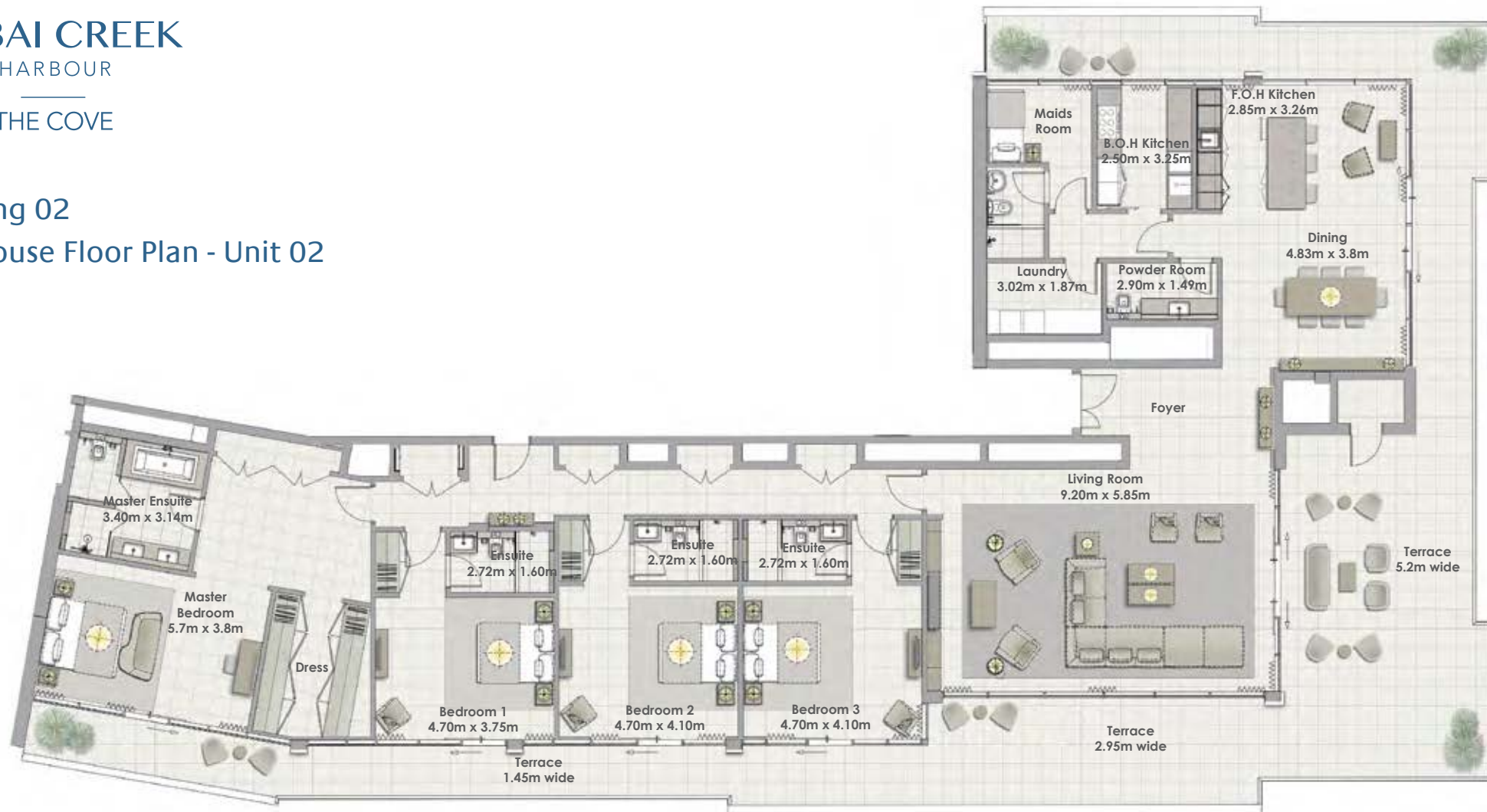


1. All dimensions are in imperial and metric, and measured to structural elements and exclude wall finishes and construction tolerances. 2. All materials, dimensions, and drawings are approximate only. 3. Information is subject to change without notice, at developer's absolute discretion. 4. Actual area may vary from the stated area. 5. Drawings not to scale. 6. All images used are for illustrative purposes only and do not represent the actual size, features, specifications, fittings, and furnishings. 7. The developer reserves the right to make revisions/alterations, at its absolute discretion, without any liability whatsoever.



DUBAI CREEK  
HARBOUR  
THE COVE

Building 02  
Penthouse Floor Plan - Unit 02



Building 02  
4 BEDROOM  
UNIT 02/ LEVELS 09

Suite Area	325.25Sq.m. / 3500.96Sqft.
Terrace Area	153.31Sq.m. / 1650 Sqft.
Total Area	478.56 Sq.m. /5151.18 Sqft.

1. All dimensions are in imperial and metric, and measured to structural elements and exclude wall finishes and construction tolerances. 2. All materials, dimensions, and drawings are approximate only. 3. Information is subject to change without notice, at developer's absolute discretion. 4. Actual area may vary from the stated area. 5. Drawings not to scale. 6. All images used are for illustrative purposes only and do not represent the actual size, features, specifications, fittings, and furnishings. 7. The developer reserves the right to make revisions/alterations, at its absolute discretion, without any liability whatsoever.



# DUBAI CREEK

## HARBOUR

### THE COVE

For more information on **The COVE** in Dubai Creek Harbour, please call 800 36227(UAE) or +971 4 366 1668 (International). Visit our online sales centre at [emaar.com](http://emaar.com) or any of our sales centres across the UAE.

#### DUBAI:

Dubai Creek Harbour Sales Centre: Ras Al Khor  
Emaar Sales Center, Downtown Dubai  
Dubai Hills Estate Sales Pavillion: Umm Suqeim Road

#### ABU DHABI:

Emaar Sales Centre: Al Nahda Tower, Ground Floor, 4th Street,  
Corniche, Al Muroor Road

Open from Saturday - Thursday, from 8.30am - 6.00pm

للمزيد من المعلومات حول **ذي كوف** يرجى زيارتنا أو الاتصال بالرقم (٨٠٠٣٦٢٢٧) في الإمارات العربية المتحدة أو +٩٧١ ٤ ٣٦٦ ١٦٦٨ (دولي) أو قم بزيارة مركز مبيعاتنا الإلكتروني على الموقع [emaar.com](http://emaar.com)

#### دبي

مركز مبيعات خور دبي في رأس الخور  
مركز مبيعات إعمار في وسط مدينة دبي  
مركز مبيعات دبي هيلز استيت على طريق أم سقيم

#### أبوظبي

مركز مبيعات إعمار في برج النهضة، الشارع الرابع،  
الكورنيش، طريق المرور - أبوظبي

السبت إلى الخميس من الساعة ٨:٣٠ صباحاً حتى الساعة ٦ مساءً

