

# LOCATION





# FLOOR PLANS

## MASTERPLAN



**13 buildings**

**1,442 residential units**

**Prices range**

**310,000 AED and 1,480,000 AED.**

The project is destined to become a **24-hour living**, walkable community spread over **800,000 sq. ft. of land.**

**Phase 1 & 2 handover** for the development is scheduled to commence in **Q4 2018** and **Phase 3** will be handed over by **Q2 2019.**

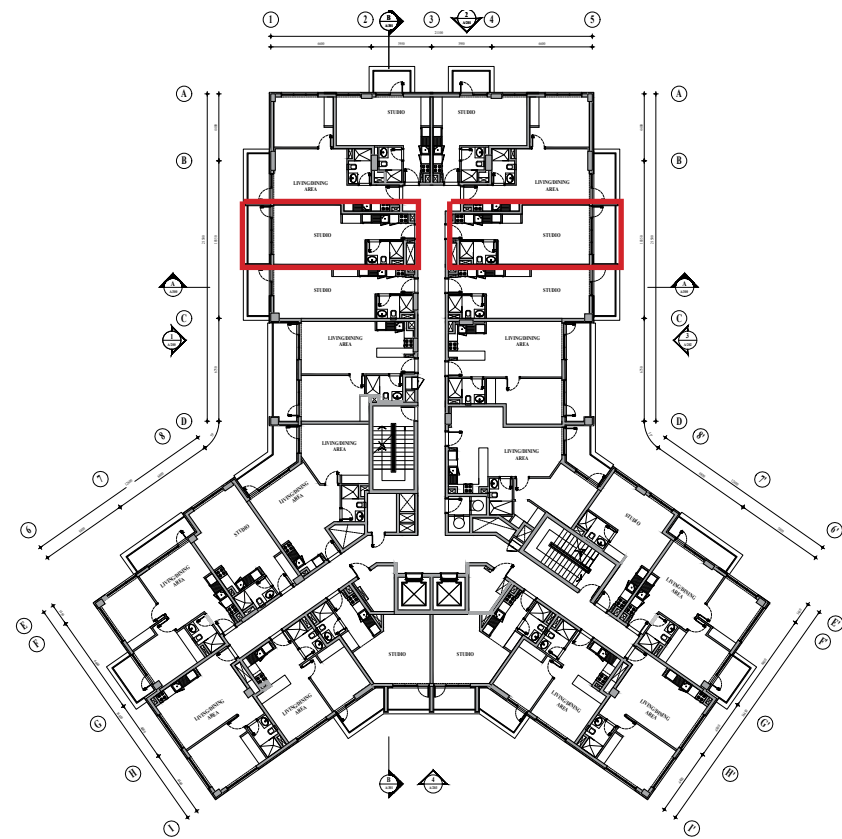
The **3 bed room units** is with **580AED per sq ft the best value in the UAE!**





# FLOOR PLANS

## STUDIO



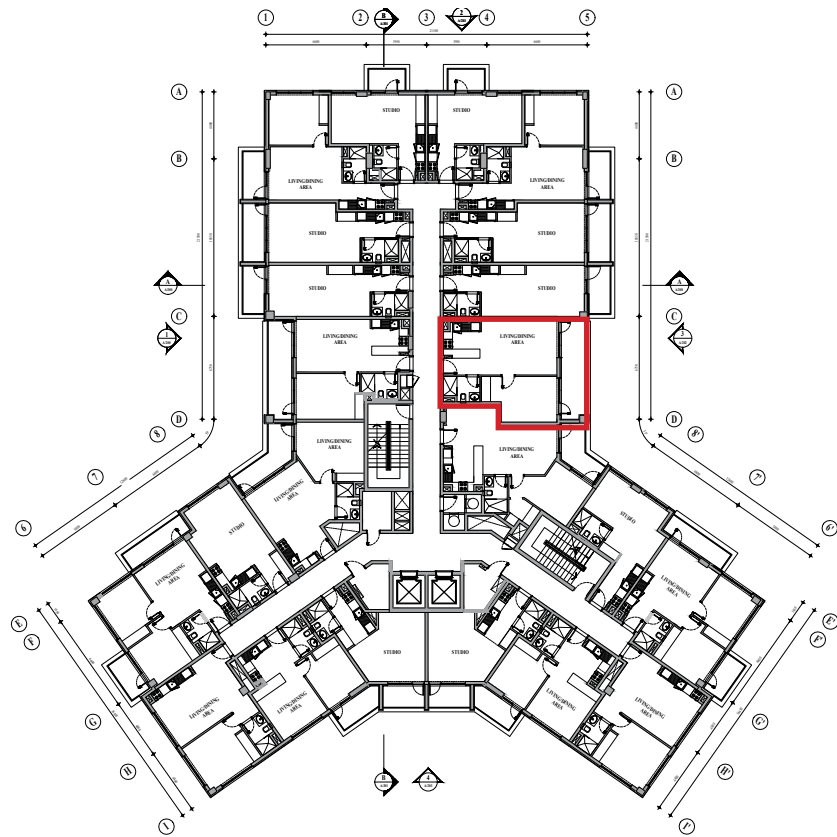
TOTAL APARTMENT AREA | 38 sqm  
TERRACE | 5.3 sqm



# FLOOR PLANS

TOTAL APARTMENT AREA | 55 sqm

## 1 BEDROOM



**MAG**  
DUBAI SOUTH

# FLOOR PLANS

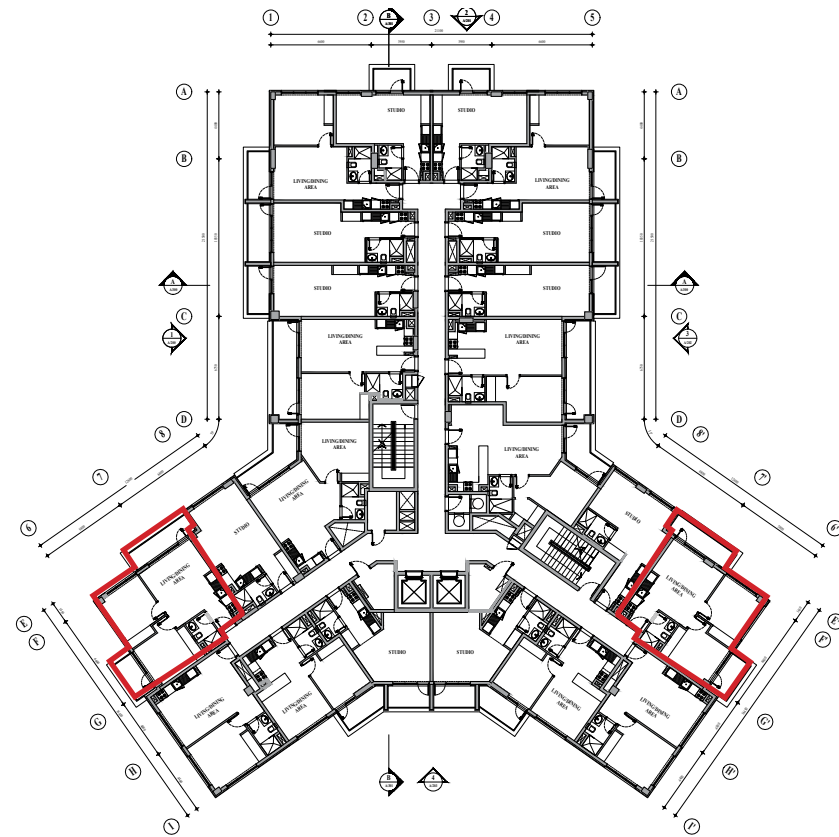
## 2 BEDROOM

TOTAL APARTMENT AREA

64 sqm

TERRACE

9.2 sqm



**MAG**  
DUBAI SOUTH