



[www.ellingtongroup.com](http://www.ellingtongroup.com)



MAKE A LIVING STATEMENT











“Space is the breath of art.”

F R A N K   L L O Y D   W R I G H T





I N N O V A T O R S   O F   C H A N G E

We challenge the expected. That luxury can be about simplicity, and that less is very often, more. Rather than simply providing people with a space to inhabit, we differentiate ourselves through our innate understanding of how people actually *want* to live.

As a boutique developer headquartered in Dubai, while we look ahead to the future, we know that life is lived *today*. We create signature residences known for their substance, not just style and innovate through our standards of build quality, design and a long-term commitment to shaping the Dubai real estate landscape with a reputation built on trust and credibility.

We benchmark our standards against the world's best. With clientele that are exceptionally discerning, we focus on creating products that stand out; from original thought in architectural concepts, to the principles of design and development, right through to the finest details in bespoke craftsmanship and interiors. An Ellington property offers investors and residents the opportunity to acquire and live in homes that not only match their refined taste and style, but also surpass all expectations for the finer things in life.











CONNECTEDNESS IN ALL YOUR SURROUNDINGS





## FROM DESERT TO DESTINATION CITY

A city with rich cultural heritage, civilisation in Dubai can be traced back as far as 3000BC. For centuries, residents of the coastal town depended on fishing, pearl diving and trade for their livelihood, something that did not change until the discovery of oil in the second half of the 20<sup>th</sup> century. Under the guidance of visionary leaders, Dubai rapidly transformed from a quiet settlement to a world-class city in a matter of just decades.

Today, Dubai is synonymous with success. The bustling metropolis has made a name for itself across the globe with innovative projects including the Palm Islands, Dubai Opera and Burj Khalifa, the world's tallest building. Regarded as the financial hub of the Middle East, the emirate houses regional headquarters for many international banks and corporations. Dubai will once again take the global centre stage when it hosts the World Expo in 2020.

Dubai's tax-free environment, high standard of living and year-round sunshine make it a popular choice for expats. One of the most multicultural cities in the world, Dubai's population of 2.3 million people represents nearly 200 nationalities. The city also features a modern infrastructure backbone, an excellent public transportation network and two international airports with direct flights to six continents.







## DUBAI: A BENCHMARK FOR CONTEMPORARY LIVING

A city where nobody needs an excuse to have fun, Dubai boasts leisure options that impress even the most discerning. Individuals with an affinity for all things refined can indulge in gourmet dining, world-class spas and trendy nightspots, while those in the mood for down time relaxation can unwind at the city's pristine beaches, extensive public parks or one of the hip cafes that line Downtown Dubai. Thrill seekers can enjoy a wide range of water sports, theme parks and even an indoor ski slope. Often dubbed the shopping capital of the Middle East, retail enthusiasts can take pleasure in finding unbeatable bargains for everything from gold to electronics, as well as the latest fashion at malls and designer boutiques. For those who crave a different experience, the city also hosts numerous performances by international music artists, sporting events as well as arts and film festivals.







## THE HEART OF DUBAI BEATS HERE

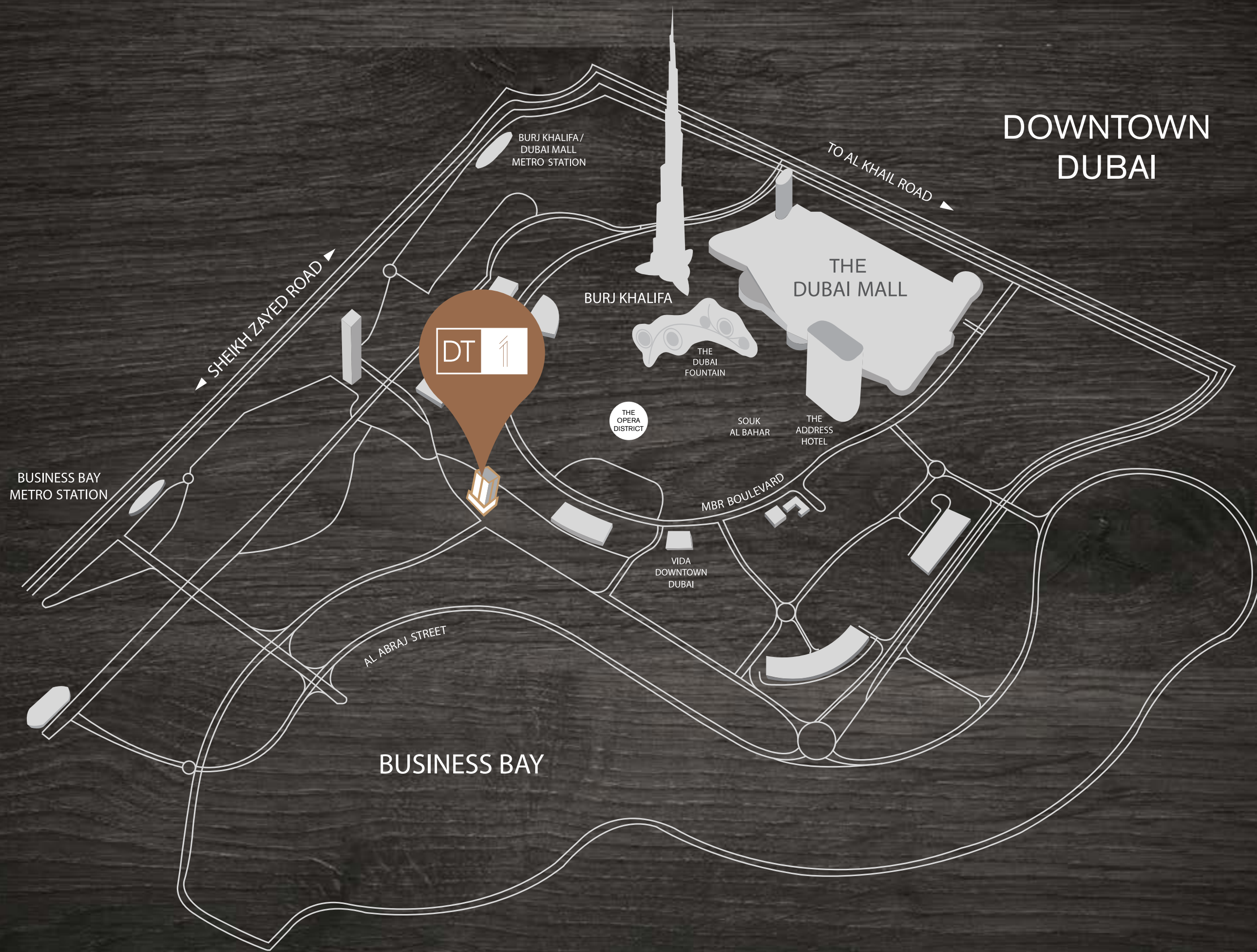
Downtown Dubai and Business Bay are two of the most sought-after neighbourhoods in Dubai and with good reason. Located adjacent to one another, both neighbourhoods emanate a cosmopolitan vibe and offer world-class retail, dining and entertainment experiences.

Downtown Dubai, renowned for the iconic Burj Khalifa and The Dubai Mall; the world's largest luxury mall, is also home to beautifully landscaped walkways, lush green parks and some of the trendiest hotels in the city.

Just south of Downtown Dubai, Business Bay's claim to fame is JW Marriott Marquis, the world's tallest hotel. Featuring modern skyscrapers and Bay Avenue's family-friendly recreational facilities including a skate park and jogging track, as well as the Dubai Water Canal, the neighbourhood is a natural choice for many residents in the city. Centrally located, both Downtown Dubai and Business Bay offer seamless connectivity to the city via the Dubai Metro red line and the Sheikh Zayed Road and Al Khail Road expressways.







## DOWNTOWN DUBAI



3mins

**THE  
OPERA  
DISTRICT**



5mins

**BURJ  
KHALIFA/  
THE DUBAI  
MALL**



8mins

**DUBAI  
INTERNATIONAL  
FINANCIAL  
CENTRE**



12mins

**MEYDAN  
RACECOURSE**



16mins

**DUBAI  
INTERNATIONAL  
AIRPORT**



17mins

**DUBAI  
CREEK**



18mins

**BURJ  
AL ARAB**



20mins

**EMIRATES  
GOLF CLUB**

SEAMLESSLY CONNECTED

FIGURES LISTED ABOVE ARE AVERAGE DRIVE TIME 





Best Residential  
High-rise Architecture  
Dubai

DT1  
by Ellington Group



Best Residential  
High-rise Architecture  
Dubai

DT1  
by Ellington Group

DT1 was voted 'Best Residential High-rise' at the Arabian Property Awards two years in a row. The building was designed to resonate with individuals who consider art, innovation and refinement integral to their lives. Conceptualised by the Perkins+Will team, winners in the 'Large Architecture Firm of the Year' category at the same award ceremony, DT1 stands out as a space that has the ability to transform and enhance the lives of its residents.



## WHERE ARCHITECTURE MIRRORS ART

Created with contemporary lifestyles in mind, DT1 offers a truly distinct setting inside out. A sleek, contemporary glass veneer wraps around private residences that echo the design sensibilities of its inhabitants. Where beauty and function are at home with each other, and spaces evolve into exceptionally well-thought urban narratives.

From a dramatic point of entry that stays with you even long after you've left, to a nuanced, bespoke approach to how living spaces are designed and curated. Every touch point from material specifications and finish quality to interiors and lighting shows an intuitiveness and sophistication in execution.

Unmistakably luxurious, created with bold, warm colour palettes, elegant and well-chosen durable finishes, sculptured lights and unexpected details, every residence at DT1 is a chic, modern and bold expression of you.







A 25350  
DUBAI





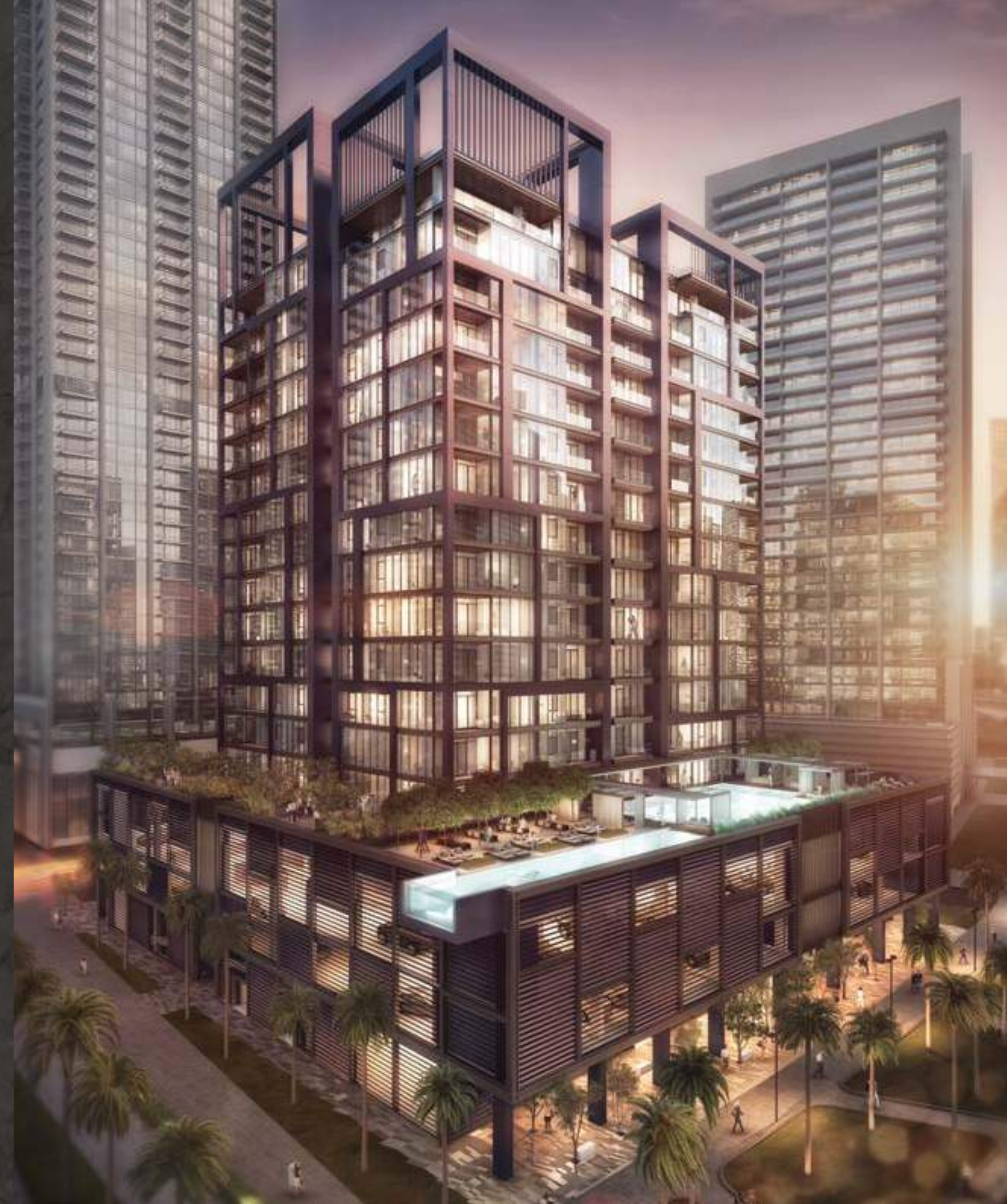








ELEVATING THE ART OF LIVING WELL







LOBBY



FIND YOURSELF AT HOME IN BESPOKE, MODERN LUXURY







## AT THE HEART OF AN INSPIRING HOME. MIELE.

DT1 was designed to offer residents the opportunity to live according to their own exacting standards. Contemporary in design and function, the kitchens at DT1 are fitted with top-of-the-line built-in appliances from Miele – the gold standard of domestic appliances. Created with precision and designed to perform beyond excellence, these appliances enhance homes through design and innovation and are the epitome of prime living.

The living spaces and kitchens of each unit feature both laminated wood and lacquer joinery, and are interconnected to extend a more spacious feel. Also included are an under-mount kitchen sink and a dramatic mixer in addition to carefully crafted joinery details. Floor-to-ceiling windows are used to maximise natural lighting in every room and allow for sweeping views of Downtown Dubai.



**Miele**

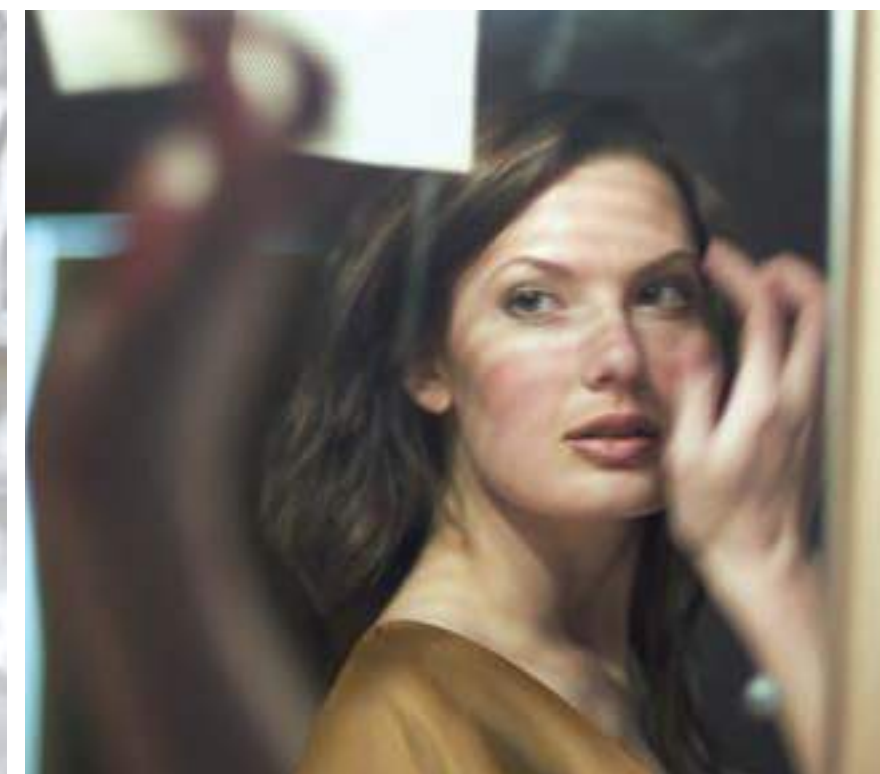






WHAT MATTERS MOST IN LIFE





STYLISH, TIMELESS, REFINED. THE PERSONIFICATION OF YOU







A M O D E R N C L A S S I C I N  
T H E M A K I N G

Elegance and attention to detail are integral to DT1, and bathrooms are no exception. Modern in design, beautiful yet functional; they feature quartz vanity countertops, integrated lighting, laminated wood and lacquer built-in joinery, as well as his and hers medicine cabinets and sinks.







16 LEVELS + GROUND



LAP & LEISURE  
POOLS



GYM



CLUB LOUNGE



LANDSCAPED  
AREAS



RETAIL



ART GALLERY

DT1 AT A GLANCE





## ESCAPE THE EVERYDAY

DT1's facilities were chosen to inspire residents to achieve a balanced lifestyle. Get in shape at the Fitness Centre which features state-of-the-art equipment for cardiovascular workouts and freestyle weight training. Take a dip in the Leisure and Lap Pools on level 3, and enjoy the views that come with an invigorating workout. Or simply enjoy quality time with family in the Games Room.



## LEGEND

- A** LEISURE POOL
- B** LAP POOL
- C** LIFT LOBBY
- D** CLUB LOUNGE
- E** FITNESS CENTRE
- F** CHANGING ROOMS
- G** KIDS' PLAY ROOM
- H** SUN TERRACE
- I** PRIVATE TERRACE
- J** GARDEN TERRACE



## A WORLD APART

For art enthusiasts, the Art Gallery on the ground floor features a sun-drenched open terrace that welcomes in natural light. Whereas, the Club Lounge and Garden Terrace are perfect alternatives for those seeking to wind down in the evenings.







UNWIND AT THE CLUB LOUNGE ON THE AMENITIES LEVEL







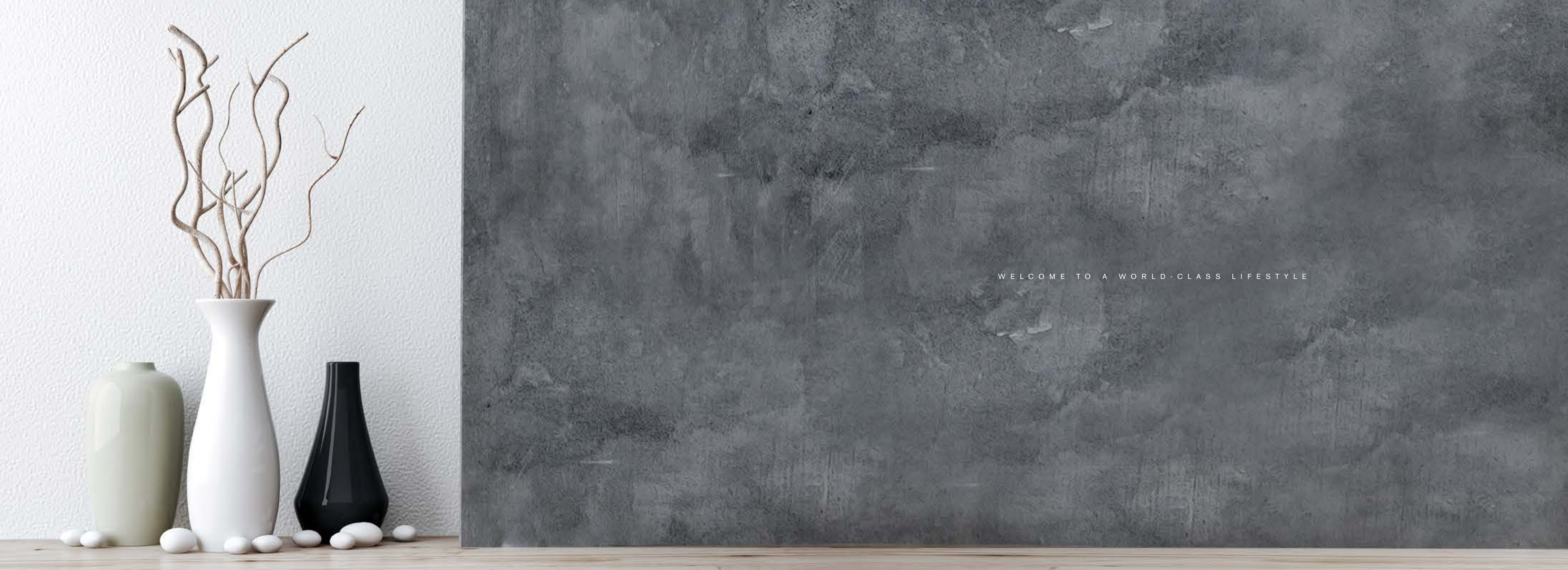


LIVING WELL IS IN THE EVERYDAY









WELCOME TO A WORLD-CLASS LIFESTYLE





To arrange a private viewing of the vignette of  
the show apartment, or for more information,  
please contact us at:

  
**ELLINGTON**

16<sup>TH</sup> FLOOR, BURLINGTON TOWER  
BUSINESS BAY, DUBAI, UAE  
P.O. BOX 117500

800 8288 (TOLL FREE)  
+971 4 278 0888  
INFO@ELLINGTONGROUP.COM

DISCLAIMER:  
DRAWINGS AND IMAGES ARE FOR ILLUSTRATIVE PURPOSES ONLY.  
INFORMATION IS SUBJECT TO CHANGE WITHOUT NOTICE.



