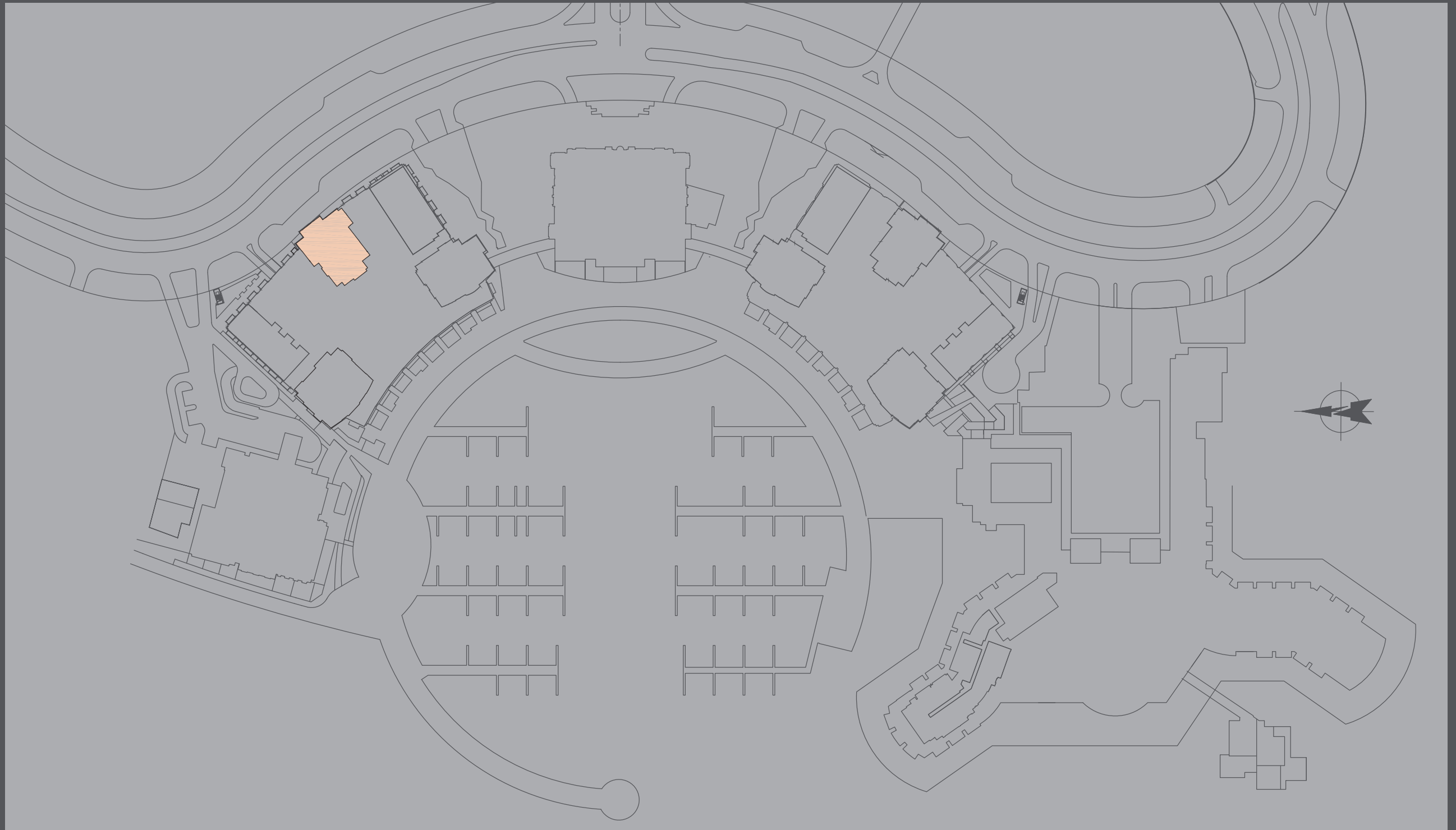


FLOOR
PLANS
NORTH T₂

دبي كريك رزیدنسز
DUBAI CREEK RESIDENCES



دبي كريك رزیدنسز

DUBAI CREEK RESIDENCES

خور دبي
DUBAI CREEK HARBOUR

الخيران
THE LAGOONS

DUBAI
HOLDING



NORTH T₂

2 BEDROOMS
WITH TERRACE

UNIT 05

LEVEL 3

| | Sq.m | Sq.ft |
|--------------|--------|----------|
| Suite Area | 117.11 | 1,260.56 |
| Terrace Area | 44.65 | 480.61 |
| Total Area | 161.76 | 1,741.17 |



Disclaimer: 1. All room dimensions are measured to structural elements and exclude wall finishes and construction tolerances. 2. All dimensions have been provided by our consultant architects. 3. All materials, dimensions & drawings are approximate. Information is subject to change without notice. 4. Actual suite area may vary from the stated area. Drawings not to scale. The developer reserves the right to make revisions. 5. Calculation of suite area is measured as the area bounded by the centre line of demising or partition walls separating one unit from another unit, the exterior face of all exterior walls, and the exterior face of the corridor wall enclosing the adjoining unit. 6. Calculation of balcony area is measured as the area bounded by the centre line of demising or partition walls separating one unit from another unit, the outmost face of the enclosing guard and the external face of the unit adjoining the balcony. 7. The units are measured at typical floor in the building. Columns may vary in size depending on the floor level. 8. Areas have been calculated in accordance with Dubai Land Department method of measurement as at October 2014.

دبي كريك رزیدنسز

DUBAI CREEK RESIDENCES

دبي
DUBAI CREEK HARBOUR

الخيران
THE LAGOONS

DUBAI
HOLDING



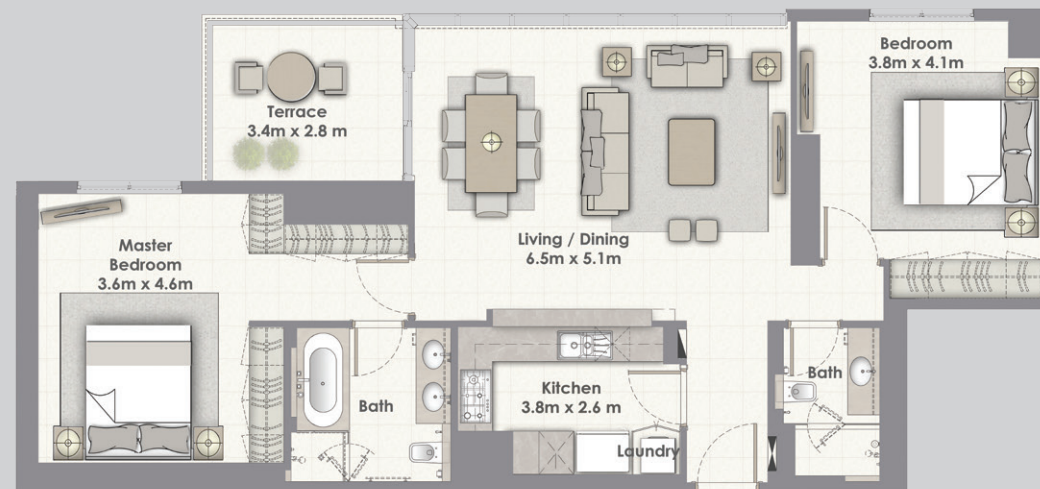
NORTH T₂

2 BEDROOMS
WITH TERRACE

UNIT 05

LEVELS 4-15
AND 17-32

| | Sq.m | Sq.ft |
|--------------|--------|----------|
| Suite Area | 117.11 | 1,260.56 |
| Terrace Area | 9.65 | 103.87 |
| Total Area | 126.76 | 1,364.43 |



Disclaimer: 1. All room dimensions are measured to structural elements and exclude wall finishes and construction tolerances. 2. All dimensions have been provided by our consultant architects. 3. All materials, dimensions & drawings are approximate. Information is subject to change without notice. 4. Actual suite area may vary from the stated area. Drawings not to scale. The developer reserves the right to make revisions. 5. Calculation of suite area is measured as the area bounded by the centre line of demising or partition walls separating one unit from another unit, the exterior face of all exterior walls, and the exterior face of the corridor wall enclosing the adjoining unit. 6. Calculation of balcony area is measured as the area bounded by the centre line of demising or partition walls separating one unit from another unit, the outmost face of the enclosing guard and the external face of the unit adjoining the balcony. 7. The units are measured at typical floor in the building. Columns may vary in size depending on the floor level. 8. Areas have been calculated in accordance with Dubai Land Department method of measurement as at October 2014.

دبي كريك رزیدنسز

DUBAI CREEK RESIDENCES

دبي
DUBAI CREEK HARBOUR

الخيران
THE LAGOONS

DUBAI
HOLDING



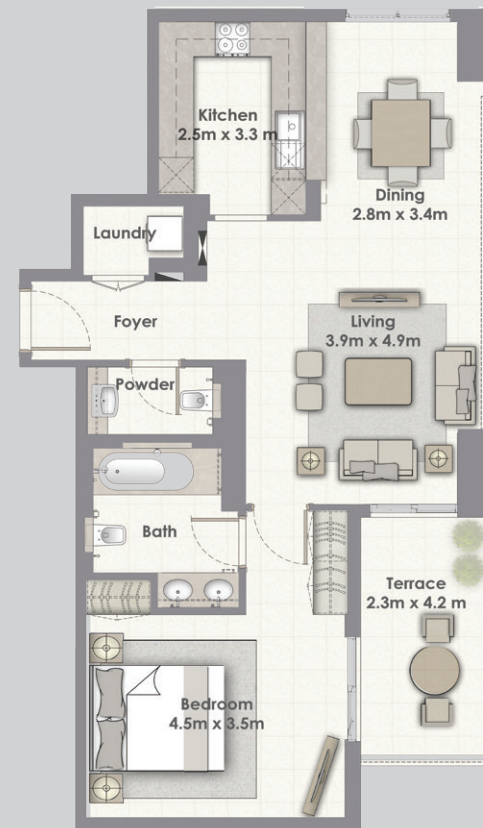
NORTH T₂

1 BEDROOM
WITH TERRACE

UNIT 04

LEVELS 3-15
AND 17-32

| | Sq.m | Sq.ft |
|--------------|-------|----------|
| Suite Area | 85.51 | 920.42 |
| Terrace Area | 9.83 | 105.81 |
| Total Area | 95.34 | 1,026.23 |



Disclaimer: 1. All room dimensions are measured to structural elements and exclude wall finishes and construction tolerances. 2. All dimensions have been provided by our consultant architects. 3. All materials, dimensions & drawings are approximate. Information is subject to change without notice. 4. Actual suite area may vary from the stated area. Drawings not to scale. The developer reserves the right to make revisions. 5. Calculation of suite area is measured as the area bounded by the centre line of demising or partition walls separating one unit from another unit, the exterior face of all exterior walls, and the exterior face of the corridor wall enclosing the adjoining unit. 6. Calculation of balcony area is measured as the area bounded by the centre line of demising or partition walls separating one unit from another unit, the outmost face of the enclosing guard and the external face of the unit adjoining the balcony. 7. The units are measured at typical floor in the building. Columns may vary in size depending on the floor level. 8. Areas have been calculated in accordance with Dubai Land Department method of measurement as at October 2014.

دبي كريك رزیدنسز

DUBAI CREEK RESIDENCES

دبي
DUBAI CREEK HARBOUR

الخيران
THE LAGOONS

DUBAI
HOLDING



NORTH T₂

1 BEDROOM
WITH TERRACE

UNIT 03

LEVEL 3

| | Sq.m | Sq.ft |
|--------------|--------|----------|
| Suite Area | 101.87 | 1,096.52 |
| Terrace Area | 54.66 | 588.36 |
| Total Area | 156.53 | 1,684.87 |



Disclaimer: 1. All room dimensions are measured to structural elements and exclude wall finishes and construction tolerances. 2. All dimensions have been provided by our consultant architects. 3. All materials, dimensions & drawings are approximate. Information is subject to change without notice. 4. Actual suite area may vary from the stated area. Drawings not to scale. The developer reserves the right to make revisions. 5. Calculation of suite area is measured as the area bounded by the centre line of demising or partition walls separating one unit from another unit, the exterior face of all exterior walls, and the exterior face of the corridor wall enclosing the adjoining unit. 6. Calculation of balcony area is measured as the area bounded by the centre line of demising or partition walls separating one unit from another unit, the outmost face of the enclosing guard and the external face of the unit adjoining the balcony. 7. The units are measured at typical floor in the building. Columns may vary in size depending on the floor level. 8. Areas have been calculated in accordance with Dubai Land Department method of measurement as at October 2014.

دبي كريك رزیدنسز

DUBAI CREEK RESIDENCES

دبي
DUBAI CREEK HARBOUR

الخيران
THE LAGOONS

DUBAI
HOLDING



NORTH T₂

1 BEDROOM
WITH TERRACE

UNIT 03

LEVELS 4-15
AND 17-32

| | Sq.m | Sq.ft |
|--------------|--------|----------|
| Suite Area | 101.87 | 1,096.52 |
| Terrace Area | 6.66 | 71.69 |
| Total Area | 108.53 | 1,168.21 |



Disclaimer: 1. All room dimensions are measured to structural elements and exclude wall finishes and construction tolerances. 2. All dimensions have been provided by our consultant architects. 3. All materials, dimensions & drawings are approximate. Information is subject to change without notice. 4. Actual suite area may vary from the stated area. Drawings not to scale. The developer reserves the right to make revisions. 5. Calculation of suite area is measured as the area bounded by the centre line of demising or partition walls separating one unit from another unit, the exterior face of all exterior walls, and the exterior face of the corridor wall enclosing the adjoining unit. 6. Calculation of balcony area is measured as the area bounded by the centre line of demising or partition walls separating one unit from another unit, the outmost face of the enclosing guard and the external face of the unit adjoining the balcony. 7. The units are measured at typical floor in the building. Columns may vary in size depending on the floor level. 8. Areas have been calculated in accordance with Dubai Land Department method of measurement as at October 2014.

دبي كريك رزیدنسز

DUBAI CREEK RESIDENCES

دبي
DUBAI CREEK HARBOUR

الخيران
THE LAGOONS

DUBAI
HOLDING



NORTH T₂

2 BEDROOMS
WITH TERRACE

UNIT 02

LEVEL 3

| | Sq.m | Sq.ft |
|--------------|--------|----------|
| Suite Area | 134.90 | 1,452.05 |
| Terrace Area | 112.47 | 1,210.62 |
| Total Area | 247.37 | 2,662.67 |



Disclaimer: 1. All room dimensions are measured to structural elements and exclude wall finishes and construction tolerances. 2. All dimensions have been provided by our consultant architects. 3. All materials, dimensions & drawings are approximate. Information is subject to change without notice. 4. Actual suite area may vary from the stated area. Drawings not to scale. The developer reserves the right to make revisions. 5. Calculation of suite area is measured as the area bounded by the centre line of demising or partition walls separating one unit from another unit, the exterior face of all exterior walls, and the exterior face of the corridor wall enclosing the adjoining unit. 6. Calculation of balcony area is measured as the area bounded by the centre line of demising or partition walls separating one unit from another unit, the outmost face of the enclosing guard and the external face of the unit adjoining the balcony. 7. The units are measured at typical floor in the building. Columns may vary in size depending on the floor level. 8. Areas have been calculated in accordance with Dubai Land Department method of measurement as at October 2014.

دبي كريك رزیدنسز

DUBAI CREEK RESIDENCES

دبي
DUBAI CREEK HARBOUR

الخيران
THE LAGOONS

DUBAI
HOLDING



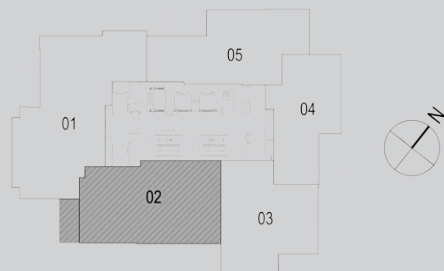
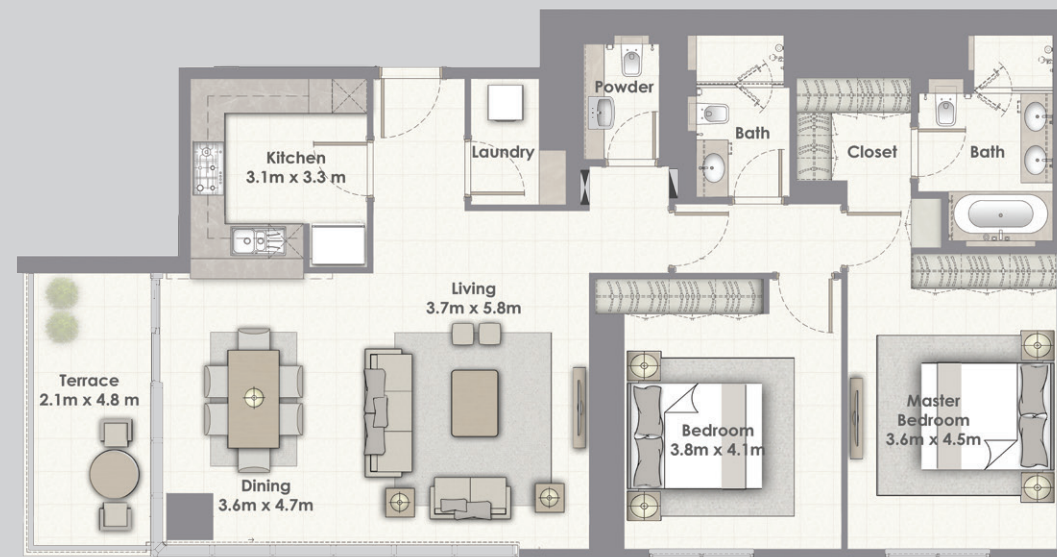
NORTH T₂

2 BEDROOMS
WITH TERRACE

UNIT 02

LEVELS 4-15
AND 17-32

| | Sq.m | Sq.ft |
|--------------|--------|----------|
| Suite Area | 134.90 | 1,452.05 |
| Terrace Area | 10.68 | 114.96 |
| Total Area | 145.58 | 1,567.01 |



Disclaimer: 1. All room dimensions are measured to structural elements and exclude wall finishes and construction tolerances. 2. All dimensions have been provided by our consultant architects. 3. All materials, dimensions & drawings are approximate. Information is subject to change without notice. 4. Actual suite area may vary from the stated area. Drawings not to scale. The developer reserves the right to make revisions. 5. Calculation of suite area is measured as the area bounded by the centre line of demising or partition walls separating one unit from another unit, the exterior face of all exterior walls, and the exterior face of the corridor wall enclosing the adjoining unit. 6. Calculation of balcony area is measured as the area bounded by the centre line of demising or partition walls separating one unit from another unit, the outmost face of the enclosing guard and the external face of the unit adjoining the balcony. 7. The units are measured at typical floor in the building. Columns may vary in size depending on the floor level. 8. Areas have been calculated in accordance with Dubai Land Department method of measurement as at October 2014.

دبي كريك رزیدنسز

DUBAI CREEK RESIDENCES

دبي
DUBAI CREEK HARBOUR

الخيران
THE LAGOONS

DUBAI
HOLDING



NORTH T₂

3 BEDROOMS
WITH TERRACE

UNIT 01

LEVELS 6
AND 26

| | Sq.m | Sq.ft |
|--------------|--------|----------|
| Suite Area | 167.23 | 1,800.05 |
| Terrace Area | 8.93 | 96.12 |
| Total Area | 176.16 | 1,896.17 |



3 BEDROOMS W/ TERRACE

Disclaimer: 1. All room dimensions are measured to structural elements and exclude wall finishes and construction tolerances. 2. All dimensions have been provided by our consultant architects. 3. All materials, dimensions & drawings are approximate. Information is subject to change without notice. 4. Actual suite area may vary from the stated area. Drawings not to scale. The developer reserves the right to make revisions. 5. Calculation of suite area is measured as the area bounded by the centre line of demising or partition walls separating one unit from another unit, the exterior face of all exterior walls, and the exterior face of the corridor wall enclosing the adjoining unit. 6. Calculation of balcony area is measured as the area bounded by the centre line of demising or partition walls separating one unit from another unit, the outmost face of the enclosing guard and the external face of the unit adjoining the balcony. 7. The units are measured at typical floor in the building. Columns may vary in size depending on the floor level. 8. Areas have been calculated in accordance with Dubai Land Department method of measurement as at October 2014.

دبي كريك رزیدنسز

DUBAI CREEK RESIDENCES

دبي
DUBAI CREEK HARBOUR

الخيران
THE LAGOONS

DUBAI
HOLDING



NORTH T₂

2 BEDROOMS
WITH TERRACE

UNIT 01

LEVEL 3

| | Sq.m | Sq.ft |
|--------------|--------|----------|
| Suite Area | 143.47 | 1,544.30 |
| Terrace Area | 113.41 | 1,220.74 |
| Total Area | 256.88 | 2,765.03 |



Disclaimer: 1. All room dimensions are measured to structural elements and exclude wall finishes and construction tolerances. 2. All dimensions have been provided by our consultant architects. 3. All materials, dimensions & drawings are approximate. Information is subject to change without notice. 4. Actual suite area may vary from the stated area. Drawings not to scale. The developer reserves the right to make revisions. 5. Calculation of suite area is measured as the area bounded by the centre line of demising or partition walls separating one unit from another unit, the exterior face of all exterior walls, and the exterior face of the corridor wall enclosing the adjoining unit. 6. Calculation of balcony area is measured as the area bounded by the centre line of demising or partition walls separating one unit from another unit, the outmost face of the enclosing guard and the external face of the unit adjoining the balcony. 7. The units are measured at typical floor in the building. Columns may vary in size depending on the floor level. 8. Areas have been calculated in accordance with Dubai Land Department method of measurement as at October 2014.

دبي كريك رزیدنسز

DUBAI CREEK RESIDENCES

خور دبي
DUBAI CREEK HARBOUR

الخيران
THE LAGOONS

DUBAI
HOLDING



NORTH T₂

3 BEDROOMS
WITH TERRACE

UNIT 01

LEVELS 4-5, 7-15, 17-25
AND 27-32

| | Sq.m | Sq.ft |
|--------------|--------|----------|
| Suite Area | 170.52 | 1,835.46 |
| Terrace Area | 8.92 | 96.01 |
| Total Area | 179.44 | 1,931.48 |



Disclaimer: 1. All room dimensions are measured to structural elements and exclude wall finishes and construction tolerances. 2. All dimensions have been provided by our consultant architects. 3. All materials, dimensions & drawings are approximate. Information is subject to change without notice. 4. Actual suite area may vary from the stated area. Drawings not to scale. The developer reserves the right to make revisions. 5. Calculation of suite area is measured as the area bounded by the centre line of demising or partition walls separating one unit from another unit, the exterior face of all exterior walls, and the exterior face of the corridor wall enclosing the adjoining unit. 6. Calculation of balcony area is measured as the area bounded by the centre line of demising or partition walls separating one unit from another unit, the outmost face of the enclosing guard and the external face of the unit adjoining the balcony. 7. The units are measured at typical floor in the building. Columns may vary in size depending on the floor level. 8. Areas have been calculated in accordance with Dubai Land Department method of measurement as at October 2014.

دُوبَايْ DUBAI CREEK HARBOUR

الْخَيْرَان
THE LAGOONS

DUBAI
HOLDING



emaar.com

CONTACT DETAILS

For more information on
Dubai Creek Residences, please visit Emaar Pavilion,
Mohammed Bin Rashid Boulevard, Downtown Dubai
or call 800 36227 (UAE) +971 4 366 1688 (International)