

DUBAI CREEK

HARBOUR

CREEK HORIZON



FLOOR

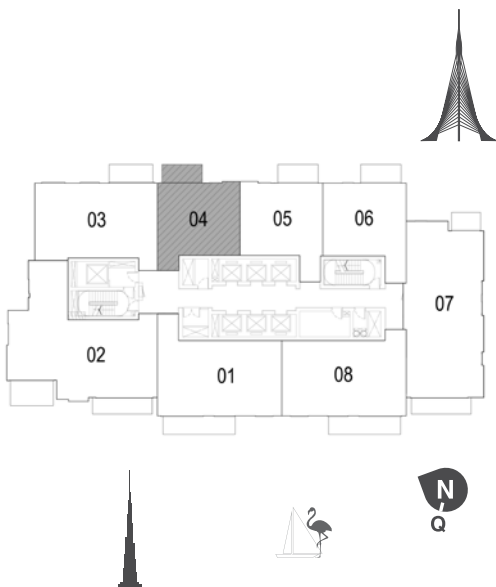
PLANS

TOWER ONE

DUBAI CREEK

HARBOUR

CREEK HORIZON



TOWER 1

1 BEDROOM W/ BALCONY

UNIT 04/ LEVEL 2-17

Suite Area	706 Sq.ft. / 65.59 Sq.m.
Balcony Area	76 Sq.ft. / 7.07 Sq.m.
Total Area	782 Sq.ft. / 72.66 Sq.m.

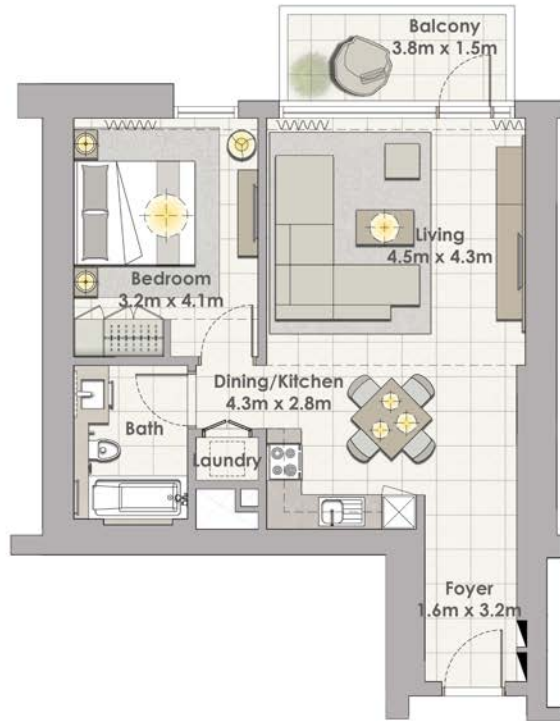


1. All dimensions are in imperial and metric, and measured to structural elements and exclude wall finishes and construction tolerances. 2. All materials, dimensions, and drawings are approximate only. 3. Information is subject to change without notice, at developer's absolute discretion. 4. Actual area may vary from the stated area. 5. Drawings not to scale. 6. All images used are for illustrative purposes only and do not represent the actual size, features, specifications, fittings, and furnishings. 7. The developer reserves the right to make revisions/alterations, at its absolute discretion, without any liability whatsoever.

DUBAI CREEK

HARBOUR

CREEK HORIZON



TOWER 1

1 BEDROOM W/ BALCONY

UNIT 05/ LEVEL 2-17



Suite Area 707 Sq.ft. / 65.66 Sq.m.

Balcony Area 76 Sq.ft. / 7.07 Sq.m.

Total Area 783 Sq.ft. / 72.73 Sq.m.



1. All dimensions are in imperial and metric, and measured to structural elements and exclude wall finishes and construction tolerances. 2. All materials, dimensions, and drawings are approximate only. 3. Information is subject to change without notice, at developer's absolute discretion. 4. Actual area may vary from the stated area. 5. Drawings not to scale. 6. All images used are for illustrative purposes only and do not represent the actual size, features, specifications, fittings, and furnishings. 7. The developer reserves the right to make revisions/alterations, at its absolute discretion, without any liability whatsoever.

DUBAI CREEK

HARBOUR

CREEK HORIZON



TOWER 1

1 BEDROOM W/ BALCONY

UNIT 06/ LEVEL 2-17

Suite Area 695 Sq.ft. / 64.54 Sq.m.

Balcony Area 63 Sq.ft. / 5.84 Sq.m.

Total Area 758 Sq.ft. / 70.38 Sq.m.

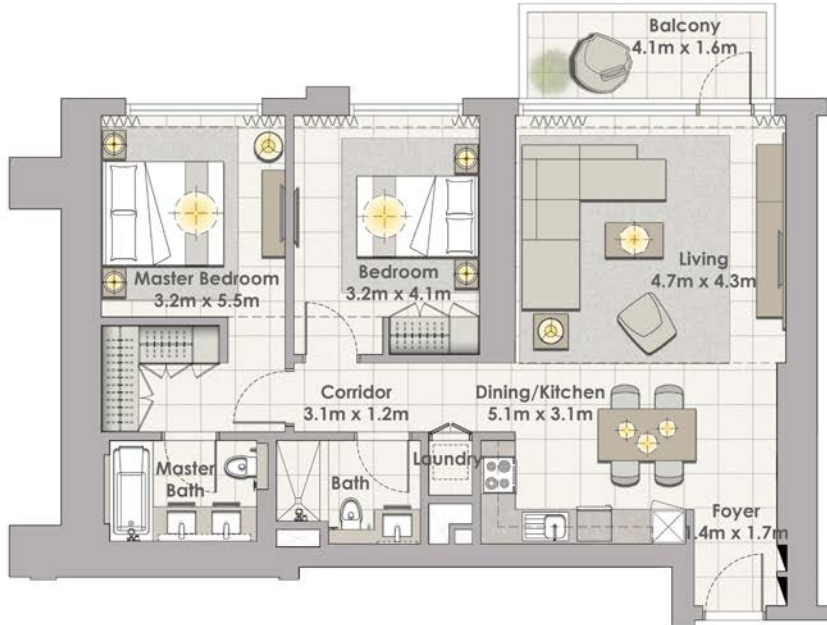


1. All dimensions are in imperial and metric, and measured to structural elements and exclude wall finishes and construction tolerances. 2. All materials, dimensions, and drawings are approximate only. 3. Information is subject to change without notice, at developer's absolute discretion. 4. Actual area may vary from the stated area. 5. Drawings not to scale. 6. All images used are for illustrative purposes only and do not represent the actual size, features, specifications, fittings, and furnishings. 7. The developer reserves the right to make revisions/alterations, at its absolute discretion, without any liability whatsoever.

DUBAI CREEK

HARBOUR

CREEK HORIZON



TOWER 1

2 BEDROOM W/ BALCONY

UNIT 03/ LEVEL 2-17



Suite Area 1063 Sq.ft. / 98.76 Sq.m.

Balcony Area 76 Sq.ft. / 7.07 Sq.m.

Total Area 1139 Sq.ft. / 105.83 Sq.m.



1. All dimensions are in imperial and metric, and measured to structural elements and exclude wall finishes and construction tolerances. 2. All materials, dimensions, and drawings are approximate only. 3. Information is subject to change without notice, at developer's absolute discretion. 4. Actual area may vary from the stated area. 5. Drawings not to scale. 6. All images used are for illustrative purposes only and do not represent the actual size, features, specifications, fittings, and furnishings. 7. The developer reserves the right to make revisions/alterations, at its absolute discretion, without any liability whatsoever.

DUBAI CREEK

HARBOUR

CREEK HORIZON



TOWER 1

2 BEDROOM W/ BALCONY

UNIT 01/ LEVEL 2-17

Suite Area	1112 Sq.ft. / 103.30Sq.m.
Balcony Area	133 Sq.ft. / 12.31 Sq.m.
Total Area	1245 Sq.ft. / 115.61 Sq.m.

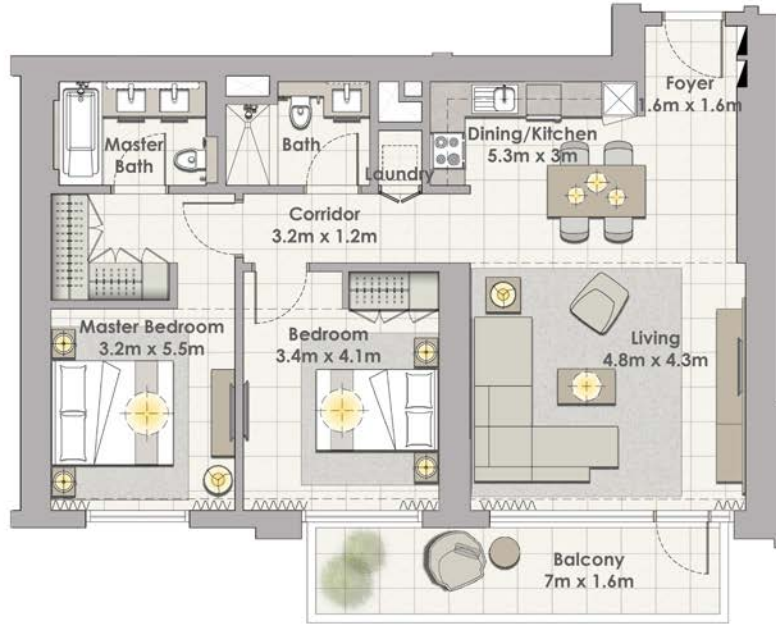


1. All dimensions are in imperial and metric, and measured to structural elements and exclude wall finishes and construction tolerances. 2. All materials, dimensions, and drawings are approximate only. 3. Information is subject to change without notice, at developer's absolute discretion. 4. Actual area may vary from the stated area. 5. Drawings not to scale. 6. All images used are for illustrative purposes only and do not represent the actual size, features, specifications, fittings, and furnishings. 7. The developer reserves the right to make revisions/alterations, at its absolute discretion, without any liability whatsoever.

DUBAI CREEK

HARBOUR

CREEK HORIZON



TOWER 1

2 BEDROOM W/ BALCONY

UNIT 08/ LEVEL 2-17

Suite Area 1075 Sq.ft. / 99.89 Sq.m.

Balcony Area 133 Sq.ft. / 12.31 Sq.m.

Total Area 1208 Sq.ft. / 112.20 Sq.m.



1. All dimensions are in imperial and metric, and measured to structural elements and exclude wall finishes and construction tolerances. 2. All materials, dimensions, and drawings are approximate only. 3. Information is subject to change without notice, at developer's absolute discretion. 4. Actual area may vary from the stated area. 5. Drawings not to scale. 6. All images used are for illustrative purposes only and do not represent the actual size, features, specifications, fittings, and furnishings. 7. The developer reserves the right to make revisions/alterations, at its absolute discretion, without any liability whatsoever.

DUBAI CREEK

HARBOUR

CREEK HORIZON



TOWER 1

3 BEDROOM W/ BALCONY

UNIT 02/ LEVEL 2-17

Suite Area	1515 Sq.ft. / 140.72 Sq.m.
Balcony Area	180 Sq.ft. / 16.75 Sq.m.
Total Area	1695 Sq.ft. / 157.47 Sq.m.

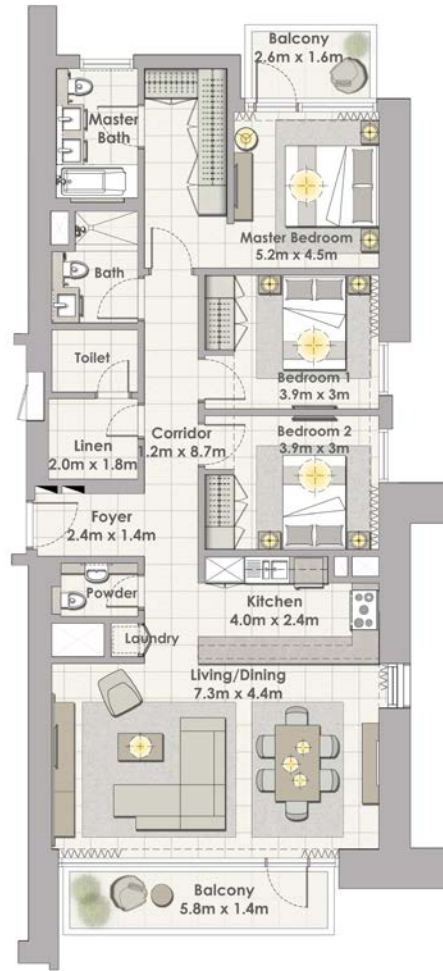


1. All dimensions are in imperial and metric, and measured to structural elements and exclude wall finishes and construction tolerances. 2. All materials, dimensions, and drawings are approximate only. 3. Information is subject to change without notice, at developer's absolute discretion. 4. Actual area may vary from the stated area. 5. Drawings not to scale. 6. All images used are for illustrative purposes only and do not represent the actual size, features, specifications, fittings, and furnishings. 7. The developer reserves the right to make revisions/alterations, at its absolute discretion, without any liability whatsoever.

DUBAI CREEK

HARBOUR

CREEK HORIZON



TOWER 1

3 BEDROOM W/ BALCONY

UNIT 07/ LEVEL 2-17



Suite Area 1465 Sq.ft. / 136.13 Sq.m.

Balcony Area 162 Sq.ft. / 15.09 Sq.m.

Total Area 1627 Sq.ft. / 151.22 Sq.m.



1. All dimensions are in imperial and metric, and measured to structural elements and exclude wall finishes and construction tolerances. 2. All materials, dimensions, and drawings are approximate only. 3. Information is subject to change without notice, at developer's absolute discretion. 4. Actual area may vary from the stated area. 5. Drawings not to scale. 6. All images used are for illustrative purposes only and do not represent the actual size, features, specifications, fittings, and furnishings. 7. The developer reserves the right to make revisions/alterations, at its absolute discretion, without any liability whatsoever.

DUBAI CREEK

HARBOUR

CREEK HORIZON



TOWER 1

1 BEDROOM W/ BALCONY

UNIT 04/ LEVEL 19-34



Suite Area 707 Sq.ft. / 65.68 Sq.m.

Balcony Area 76 Sq.ft. / 7.07 Sq.m.

Total Area 783 Sq.ft. / 72.75 Sq.m.

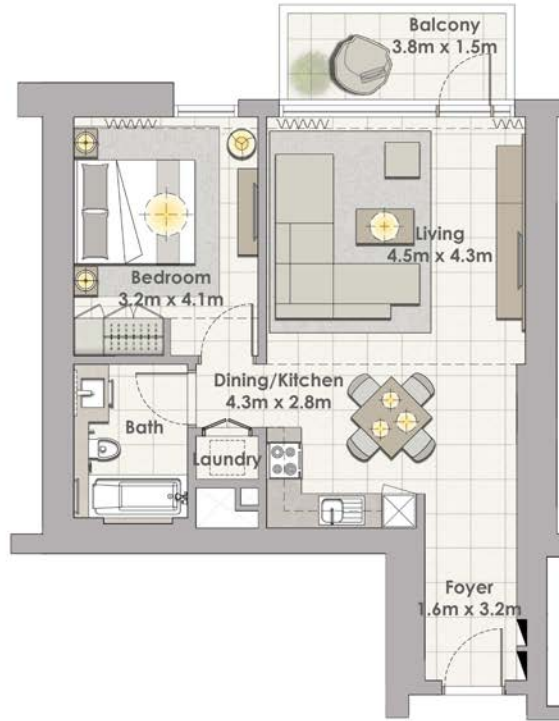


1. All dimensions are in imperial and metric, and measured to structural elements and exclude wall finishes and construction tolerances. 2. All materials, dimensions, and drawings are approximate only. 3. Information is subject to change without notice, at developer's absolute discretion. 4. Actual area may vary from the stated area. 5. Drawings not to scale. 6. All images used are for illustrative purposes only and do not represent the actual size, features, specifications, fittings, and furnishings. 7. The developer reserves the right to make revisions/alterations, at its absolute discretion, without any liability whatsoever.

DUBAI CREEK

HARBOUR

CREEK HORIZON



TOWER 1

1 BEDROOM W/ BALCONY

UNIT 05/ LEVEL 19-34



Suite Area 707 Sq.ft. / 65.67 Sq.m.

Balcony Area 76 Sq.ft. / 7.07 Sq.m.

Total Area 783 Sq.ft. / 72.74 Sq.m.



1. All dimensions are in imperial and metric, and measured to structural elements and exclude wall finishes and construction tolerances. 2. All materials, dimensions, and drawings are approximate only. 3. Information is subject to change without notice, at developer's absolute discretion. 4. Actual area may vary from the stated area. 5. Drawings not to scale. 6. All images used are for illustrative purposes only and do not represent the actual size, features, specifications, fittings, and furnishings. 7. The developer reserves the right to make revisions/alterations, at its absolute discretion, without any liability whatsoever.

DUBAI CREEK

HARBOUR

CREEK HORIZON



TOWER 1

1 BEDROOM W/ BALCONY

UNIT 06/ LEVEL 19-34

Suite Area 708 Sq.ft. / 65.77 Sq.m.

Balcony Area 63 Sq.ft. / 5.84 Sq.m.

Total Area 771 Sq.ft. / 71.61 Sq.m.

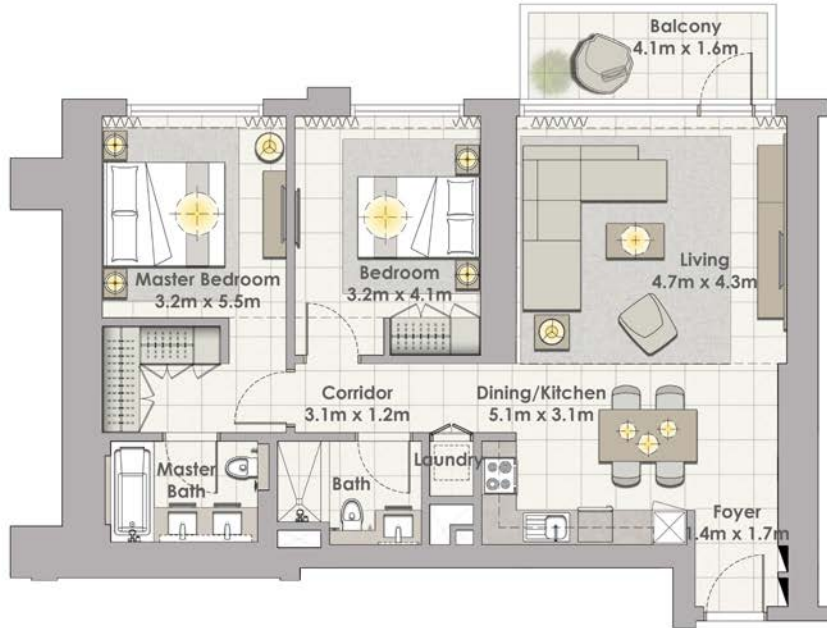


1. All dimensions are in imperial and metric, and measured to structural elements and exclude wall finishes and construction tolerances. 2. All materials, dimensions, and drawings are approximate only. 3. Information is subject to change without notice, at developer's absolute discretion. 4. Actual area may vary from the stated area. 5. Drawings not to scale. 6. All images used are for illustrative purposes only and do not represent the actual size, features, specifications, fittings, and furnishings. 7. The developer reserves the right to make revisions/alterations, at its absolute discretion, without any liability whatsoever.

DUBAI CREEK

HARBOUR

CREEK HORIZON



TOWER 1

2 BEDROOM W/ BALCONY

UNIT 03/ LEVEL 19-34

Suite Area 1060 Sq.ft. / 98.49 Sq.m.

Balcony Area 76 Sq.ft. / 7.07 Sq.m.

Total Area 1136 Sq.ft. / 105.56 Sq.m.



1. All dimensions are in imperial and metric, and measured to structural elements and exclude wall finishes and construction tolerances. 2. All materials, dimensions, and drawings are approximate only. 3. Information is subject to change without notice, at developer's absolute discretion. 4. Actual area may vary from the stated area. 5. Drawings not to scale. 6. All images used are for illustrative purposes only and do not represent the actual size, features, specifications, fittings, and furnishings. 7. The developer reserves the right to make revisions/alterations, at its absolute discretion, without any liability whatsoever.

DUBAI CREEK

HARBOUR

CREEK HORIZON



TOWER 1

2 BEDROOM W/ BALCONY

UNIT 01/ LEVEL 19-34

Suite Area	1120 Sq.ft. / 104.05 Sq.m.
Balcony Area	133 Sq.ft. / 12.31 Sq.m.
Total Area	1253 Sq.ft. / 116.36 Sq.m.

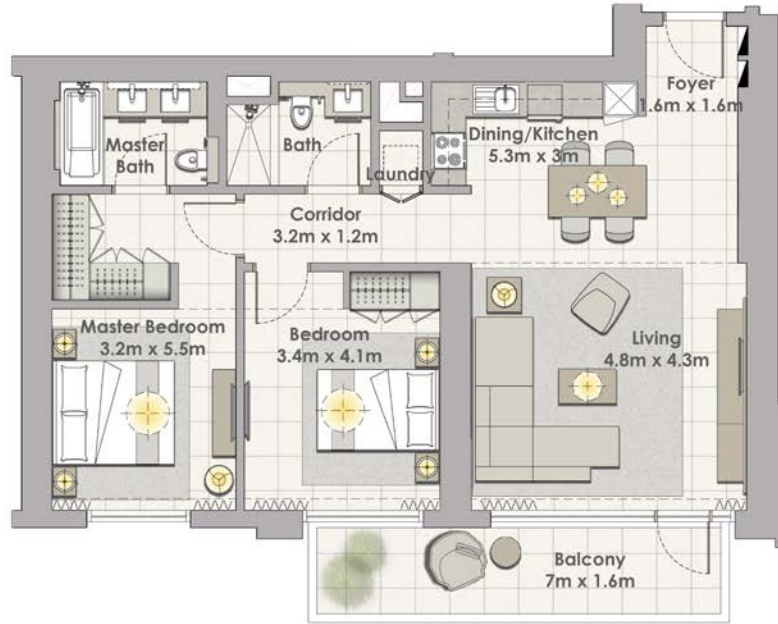


1. All dimensions are in imperial and metric, and measured to structural elements and exclude wall finishes and construction tolerances. 2. All materials, dimensions, and drawings are approximate only. 3. Information is subject to change without notice, at developer's absolute discretion. 4. Actual area may vary from the stated area. 5. Drawings not to scale. 6. All images used are for illustrative purposes only and do not represent the actual size, features, specifications, fittings, and furnishings. 7. The developer reserves the right to make revisions/alterations, at its absolute discretion, without any liability whatsoever.

DUBAI CREEK

HARBOUR

CREEK HORIZON



TOWER 1

2 BEDROOM W/ BALCONY

UNIT 08 LEVEL 19-34

Suite Area	1082 Sq.ft. / 100.54 Sq.m.
Balcony Area	133 Sq.ft. / 12.31 Sq.m.
Total Area	1215 Sq.ft. / 112.85 Sq.m.



1. All dimensions are in imperial and metric, and measured to structural elements and exclude wall finishes and construction tolerances. 2. All materials, dimensions, and drawings are approximate only. 3. Information is subject to change without notice, at developer's absolute discretion. 4. Actual area may vary from the stated area. 5. Drawings not to scale. 6. All images used are for illustrative purposes only and do not represent the actual size, features, specifications, fittings, and furnishings. 7. The developer reserves the right to make revisions/alterations, at its absolute discretion, without any liability whatsoever.

DUBAI CREEK

HARBOUR

CREEK HORIZON



TOWER 1

3 BEDROOM W/ BALCONY

UNIT 02/ LEVEL 19-34



Suite Area	1524 Sq.ft. / 141.54 Sq.m.
Balcony Area	180 Sq.ft. / 16.75 Sq.m.
Total Area	1704 Sq.ft. / 158.29 Sq.m.

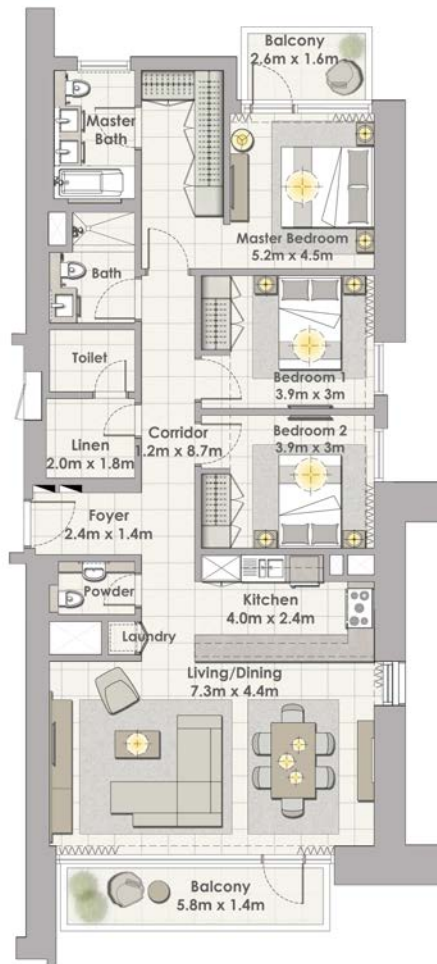


1. All dimensions are in imperial and metric, and measured to structural elements and exclude wall finishes and construction tolerances. 2. All materials, dimensions, and drawings are approximate only. 3. Information is subject to change without notice, at developer's absolute discretion. 4. Actual area may vary from the stated area. 5. Drawings not to scale. 6. All images used are for illustrative purposes only and do not represent the actual size, features, specifications, fittings, and furnishings. 7. The developer reserves the right to make revisions/alterations, at its absolute discretion, without any liability whatsoever.

DUBAI CREEK

HARBOUR

CREEK HORIZON



TOWER 1

3 BEDROOM W/ BALCONY

UNIT 07 LEVEL 19-34



Suite Area 1471 Sq.ft. / 136.65 Sq.m.

Balcony Area 162 Sq.ft. / 15.09 Sq.m.

Total Area 1633 Sq.ft. / 151.74 Sq.m.



1. All dimensions are in imperial and metric, and measured to structural elements and exclude wall finishes and construction tolerances. 2. All materials, dimensions, and drawings are approximate only. 3. Information is subject to change without notice, at developer's absolute discretion. 4. Actual area may vary from the stated area. 5. Drawings not to scale. 6. All images used are for illustrative purposes only and do not represent the actual size, features, specifications, fittings, and furnishings. 7. The developer reserves the right to make revisions/alterations, at its absolute discretion, without any liability whatsoever.